

# Dome Head Ex e Stopping Plug



## Features

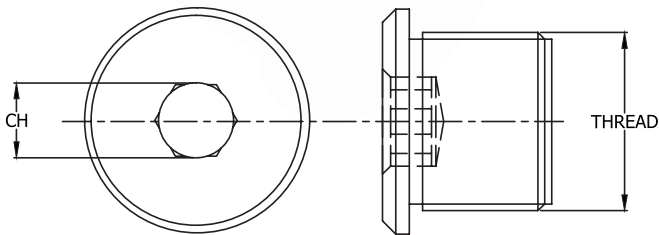
- Suitable for use in Zones 1, 2, 21, 22

## Approvals



## Certification & Standards

|   |  |
|---|--|
| <b>Approved to:</b>                     | EN/IEC 60079-0, 60079-1, 60079-7, 60079-31, EN60529  |
| <b>EC TYPE Examination Certificate:</b> | Baseefa 08ATEX0325X, IECEx BAS 08.0108X<br>Ex db eb I Mb<br>Ex db eb IIC Gb<br>Ex tb IIIC Db<br>IP65-66<br>UL1203 (Nickel Plated Brass and Stainless Steel only) |
| <b>Temperature:</b>                     | -60°C to +80°C   |



| Nickel Plated Brass Part No. | Metric Thread | GID Code        | Stainless Steel Part No. | Metric Thread | GID Code        | Brass Part No. | Metric Thread | GID Code        |
|------------------------------|---------------|-----------------|--------------------------|---------------|-----------------|----------------|---------------|-----------------|
| EXN/M16/DSP                  | M16 x 1.5     | 7TCA297140R0143 | EXS/M16/DSP              | M16 x 1.5     | 7TCA297140R0116 | EX/M16/DSP     | M16 x 1.5     | 7TCA297140R0132 |
| EXN/M20/DSP                  | M20 x 1.5     | 7TCA297140R0092 | EXS/M20/DSP              | M20 x 1.5     | 7TCA297140R0117 | EX/M20/DSP     | M20 x 1.5     | 7TCA297140R0038 |
| EXN/M25/DSP                  | M25 x 1.5     | 7TCA297140R0096 | EXS/M25/DSP              | M25 x 1.5     | 7TCA297140R0119 | EX/M25/DSP     | M25 x 1.5     | 7TCA297140R0046 |
| EXN/M32/DSP                  | M32 x 1.5     | 7TCA297140R0100 | EXS/M32/DSP              | M32 x 1.5     | 7TCA297140R0428 | EX/M32/DSP     | M32 x 1.5     | 7TCA297140R0054 |
| EXN/M40/DSP                  | M40 x 1.5     | 7TCA297140R0145 | EXS/M40/DSP              | M40 x 1.5     | 7TCA297140R0429 | EX/M40/DSP     | M40 x 1.5     | 7TCA297140R0062 |
| EXN/M50/DSP                  | M50 x 1.5     | 7TCA297140R0146 | EXS/M50/DSP              | M50 x 1.5     | 7TCA297140R0430 | EX/M50/DSP     | M50 x 1.5     | 7TCA297140R0166 |
| EXN/M63/DSP                  | M63 x 1.5     | 7TCA297140R0144 | EXS/M63/DSP              | M63 x 1.5     | 7TCA297140R0431 | EX/M63/DSP     | M63 x 1.5     | 7TCA297140R0164 |