

## Datasheet

### DPDT Toggle Switch, ON-ON

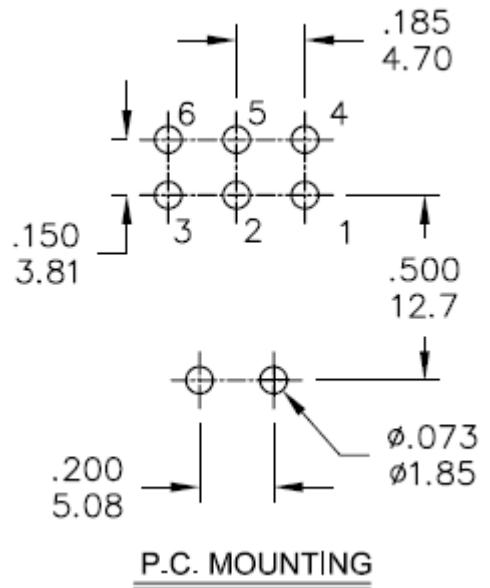
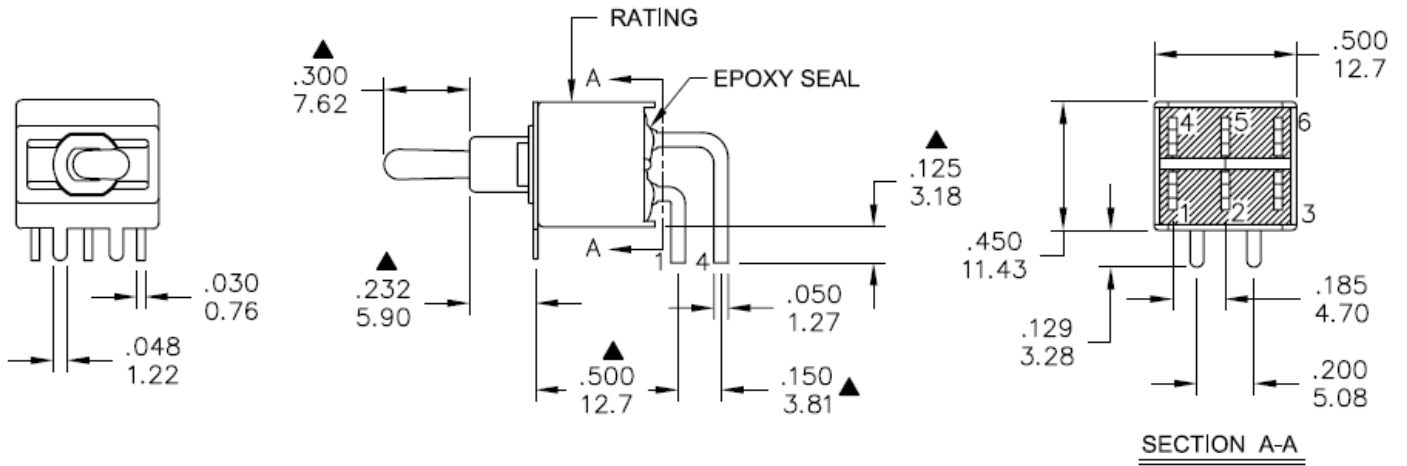
RS Stock number 734-6959



#### Specifications:

MECHANICAL LIFE:	30,000 make-and-break cycles.
CONTACT RESISTANCE:	10m $\Omega$ max. Initial @ 2-4VDC 100mA for both silver and gold plated contacts.
INSULATION RESISTANCE:	1,000 M $\Omega$ min.
DIELECTRIC STRENGTH:	1,000Vrms min. @ sea level.
OPERATING TEMPERATURE:	-30°C to 85°C.
HOUSING AND BASE:	Glass filled nylon 6/6, flame retardant, heat stabilized (UL94V-0)
ACTUATOR:	Brass, chrome plated with internal, o-ring standard
SWITCH SUPPORT:	Brass or steel, tin plated
SWITCH SUPPORT RETAINER:	Stainless steel.
CONTACT/TERMINAL:	Copper alloy, with silver or gold plated
RoHS:	2002/95/EC

Dimensions – inch  
mm



Model No.	POS.1	POS.2	POS.3
1AD1	ON	NONE	ON
Term. Comm.	2-3, 5-6		2-1, 5-4
SCHMATIC		N/A	

SWITCH FUNCTION