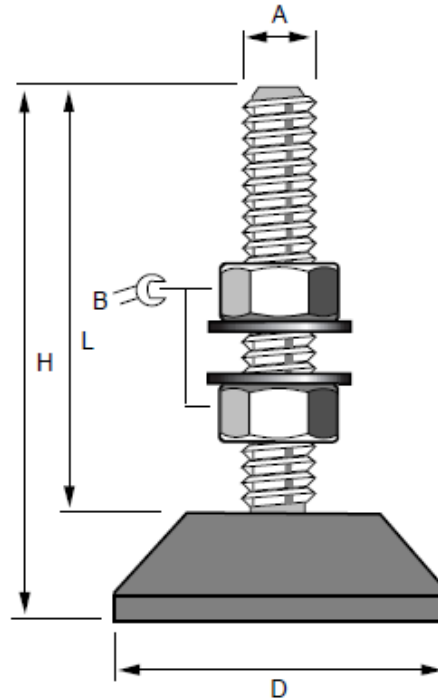


RS Stock number 423-6629



Max. load per mount daN (kg)	D mm	H mm	L mm	A mm	B mm
60	30	45	38	M10	–

THIS FOOT COMES WITHOUT THE NUTS AND WASHERS

Application areas

- **Light engineering machinery**
- **Compressors**
- **Office equipment**
- **Domestic appliances**

These RS light equipment mounts are designed to be used with lighter equipment such as wood processing machines, compactors, light industrial machinery, office equipment and domestic appliances. This product has vulcanized rubber foot. This means the product can be installed on most surfaces. They can also be fitted in internal and external holes in the machine frame chassis.