

RLK39-8-800-Z/31/40a/116

Reflection light scanner

RLK39-8-800-Z/31/40a/116

with terminal compartment

CE



- ◆ Sensing range up to 800 mm
- ◆ Pre-fault indication and output
- ◆ Light/dark ON, switchable
- ◆ Relay output
- ◆ Timer function
- ◆ Direct/alternating voltage
- ◆ Protection degree IP67
- ◆ Supplied with mounting accessory

Date of edition 08/12/03

General specifications

Detection range	0 ... 800 mm
Light source	IRED
Approvals	CE
Adjustment range	65 ... 800 mm
Reference target	standard white 200 mm x 200 mm
Light type	Alternating light
Ambient light limit	10000 Lux

Indicators/operating means

Function display	LED yellow: switching state LED red: pre-fault indication
Operating elements	sensitivity adjuster
Operating elements	Light/dark switch
Operating elements	switch for timer function

Electrical specifications

Operating voltage	12 ... 240 V DC 24 ... 240 V AC (50 ... 60 Hz)
Ripple	10 %
No-load supply current I_0	≤ 35 mA
Power consumption P_0	≤ 3 VA
Time delay before availability t_v	≤ 50 ms

Output

Switching type	light/dark switching
Signal output	1 relay output / NO
Switching voltage	≤ 240 V AC ≤ 30 V DC
Switching current	≤ 3 A
Voltage drop U_d	≤ 3 V
Switching frequency f	≤ 25 Hz
Response time	≤ 20 ms
Timer function	On-/off-delay or pulse extension on choice

Standard conformity

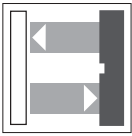
Standards	EN 60947-5-2
-----------	--------------

Ambient conditions

Ambient temperature	-25 ... 55 °C (248 ... 328 K)
Storage temperature	-40 ... 55 °C (233 ... 328 K)

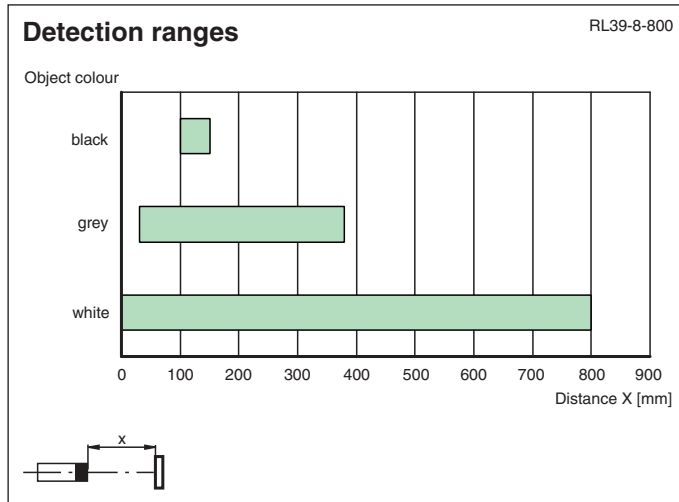
Mechanical specifications

Protection degree	IP67
Connection	terminal compartment PG9, ≤ 2.5 mm ²
Material	
Housing	PBT
Optical face	PMMA
Mass	110 g



RLK39-8-800-Z/31/40a/116

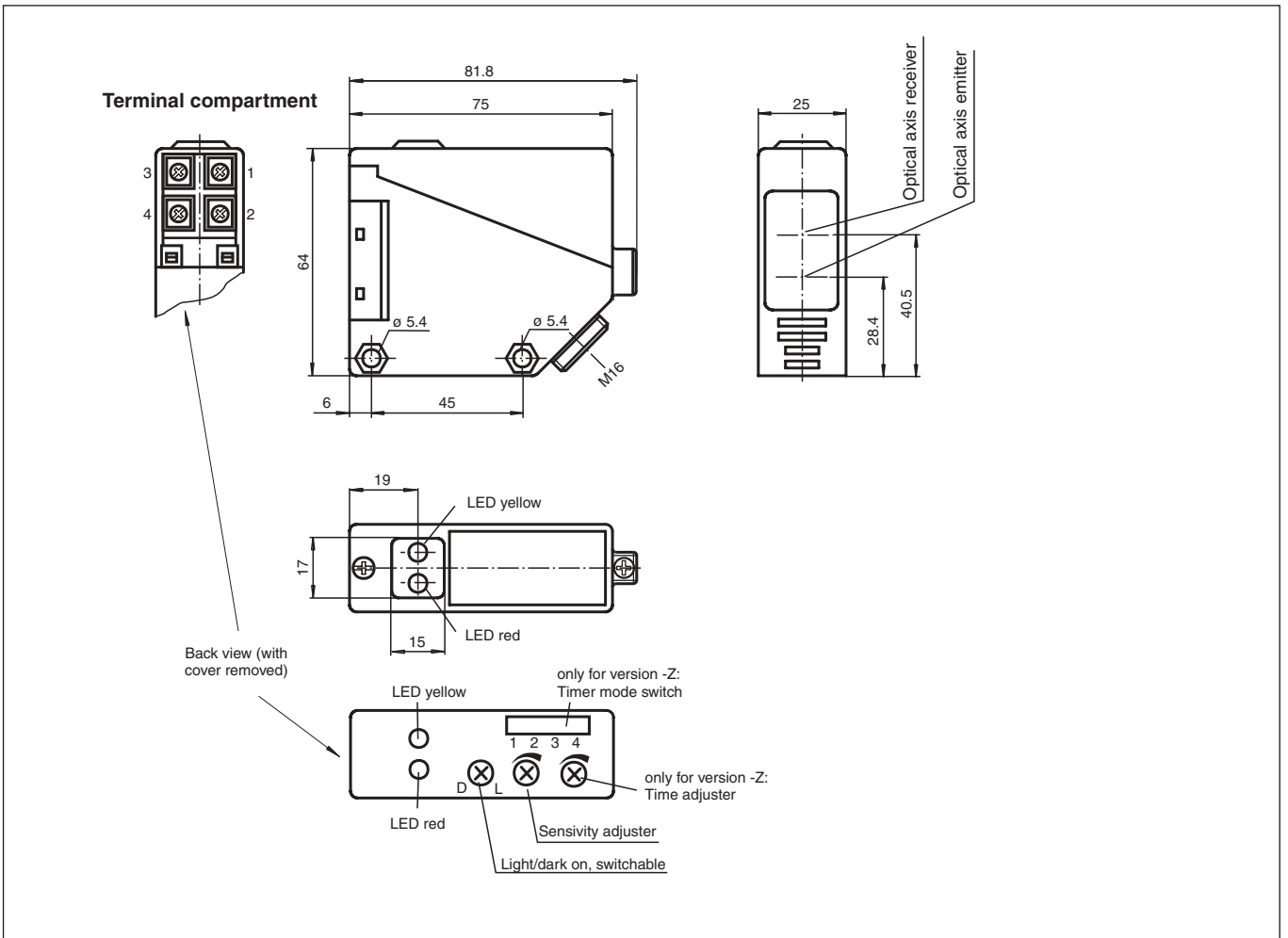
Curves/Diagrams



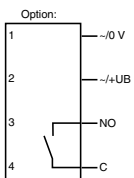
Timer Mode	Light beam	Light pass	Light block
One shot 	○	ON	OFF
	●	ON	OFF
Off-delay 	○	ON	OFF
	●	OFF	ON
On-delay 	○	OFF	ON
	●	ON	OFF
Normal 	○	ON	OFF
	●	OFF	ON

○ Denotes Light - ON T= 0.1 10 sec.
 ● Denotes Dark - ON

Dimensions



Electrical connection



○ = light on, ● = dark on

Additional Information

Conventional use:

The reflex light scanner contains the emitter and receiver in a single housing. The light from transmitter is beamed back from the recorded object is evaluated by the receiver. The detection range depend on the object colour. With dark or very small objects the detection range reduces.

Mounting instructions:

The sensor can be fastened over the through-holes directly or with the included mounting bracket.

The base surface must be flat to avoid distorting the housing during mounting. It is advisable to secure the bolts and screws with washers so that the sensor does not become misaligned.

Instructions for adjustment:

Adjust the sensor on the background. If the yellow LED illuminates, the detection range needs to be reduced with the detection range adjuster, until the yellow LED goes off.

Object detection check:

Position the object into the light beam. Position light spot on object. If the object is detected, the yellow LED illuminated. If it does not light up, further to adjust the detection range with the potentiometer, until the yellow LED lights up.

The red LED flashes if reception deteriorates (e.g. soiled lenses or by maladjustment) and when falling short of the stability control.

Illustration:

We recommend that you clean the optical interfaces and check the plug-in connections and screw connections at regular intervals.

