



*Programming Systems*

# **EPP-3 & EPP-4 Memory Programmer**

## **Installation Manual**

### **Dear User**

Thank you for buying the ART EPP Memory Programmer. This product is designed to program many programmable devices and to test digital IC's for correct functional operation.

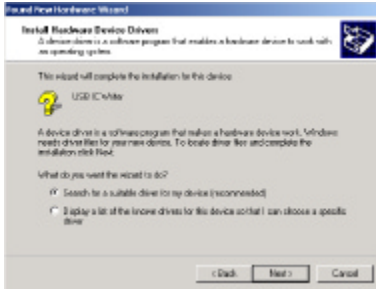
### **Installation**

1. Set Font Size to [small fonts] (96 dpi) to have the optimal display.
  - 1.1 Click the right button on the desktop.
    - Select the [Properties] at the bottom of the function menu.
  - 1.2 Select [Settings] and then click the [Advanced] to set Font Size.
2. Install the software before connecting the EPP to the PC.
  - 2.1 Insert the software CD into your CD-ROM drive. Normally the installation program will start automatically (if Auto Run is enabled for your CD-drive). Follow the instructions to complete installation.
  - 2.2 If Auto Run doesn't work, click [Setup.exe] in the CD directory to start the installation.
3. Install the driver for the EPP hardware (Windows 2000 screens).
  - 3.1 Make sure the EPP power is [OFF]. Connect the power adapter to the EPP and a power outlet.
  - 3.2 Connect the USB cable to PC USB port and to the programmer USB port.
  - 3.3 Turn the EPP power to [ON]. Windows will now start the [Found New Hardware Wizard].



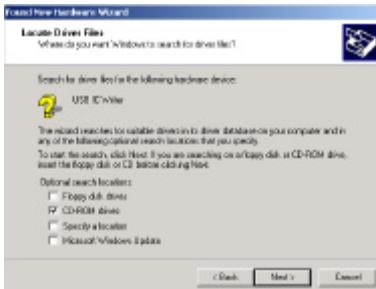
### 3.4 Install Hardware Device Driver

→ Search for a suitable driver for my device  
(recommended)



### 3.5 Select Optional search locations

→ CD-ROM drives



### 3.6 Driver Files Search Result

→ Windows will find a driver for this device  
...\\driver\usbwrite.inf



## 3.7 Click [Finish] in the Found New Hardware Wizard



**NOTE:** Do not use adapters with other plug types, polarity or voltages; your equipment may be damaged.

### ***How To Get More Information***

The WebSite (<http://www.artbv.nl>) contains a wide variety of information, links, software and tools that are useful to every user. Also you will find information on the complete product line of Programming Systems.

If you have questions or problems, you can always e-mail Programming Systems at: [support@artbv.nl](mailto:support@artbv.nl)

We hope you enjoy working with the ART EPP Memory Programmer.

No part of this manual may be reproduced or transmitted, in any form or by any means, electronic or mechanical, including photocopying, recording, or information storage and retrieval systems, for any purpose other than the purchaser's personal use, without the prior written permission of Programming Systems B.V.

Programming Systems B.V. specifically disclaims all warranties, either express or implied, including but not limited to implied warranties of merchantability and fitness for a particular purpose, with respect to the hardware, firmware, manual, written materials and any other accompanying items. Programming Systems B.V. reserves the right to revise or make improvements to the product at any time and without obligation to notify any person of such revisions or improvements.

Using the product implies acceptance and understanding of all guidelines and safety issues stated in the manual and all commonly accepted rules and safety issues for using electronic equipment. In no event shall Programming Systems B.V. be liable for any consequential or incidental damages or injuries, including any loss of profits and loss of data, or any other damages, arising out of the use or misuse of the product's hardware, firmware, manual, written materials and any other accompanying items.

## **Programming Systems B.V.:**

Telephone: +31- 40 - 248 26 35

Fax: +31- 40 - 248 02 95

WebSite: [www.artbv.nl](http://www.artbv.nl)

E-mail: [support@artbv.nl](mailto:support@artbv.nl)