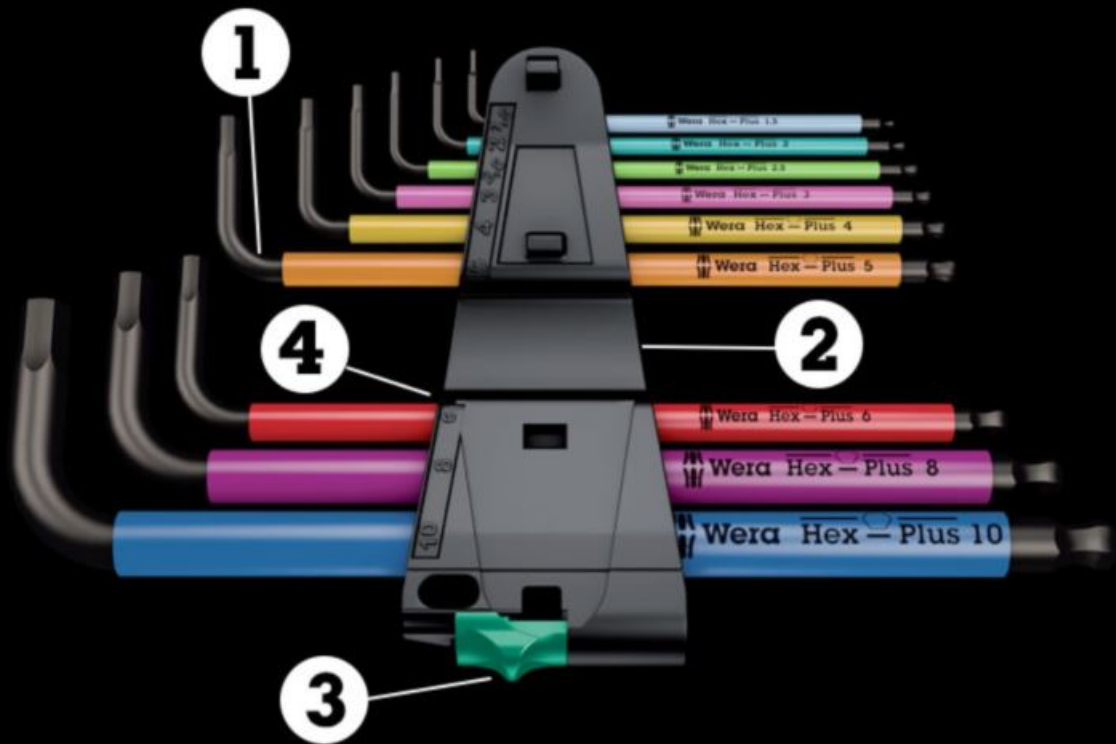


L-keys in a two-component clip

L-keys fit securely into the clip.

No wear. Easy removal.

Solid rubber material for great durability.



1

L-keys fit securely into the clip



2

Solid rubber material for great durability



2

Solid rubber material for great durability



3

Easy-to-use opening and closing mechanism



4

Sizes marked on the clip





- The plastic sleeve ensures that work is pleasant and safe even at low temperatures
- BlackLaser for high corrosion protection and long service life
- The TORX® ballpoint on the long arm allows offset applications
- Wear-resistant inscription of the sizes of the L-keys contained on the clip
- Size markings

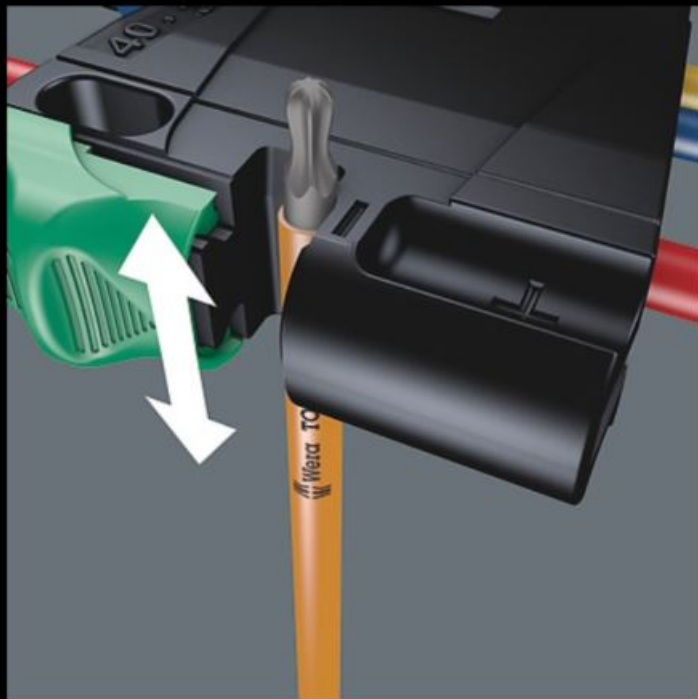


Magnetiser/Demagnetiser

For recessed screws, it's often advantageous for the screw to be held on the L-key by magnetic force. The Wera clips with magnetiser/demagnetiser enable a magnetisation/demagnetisation of L-keys in a flash.



Magnetising

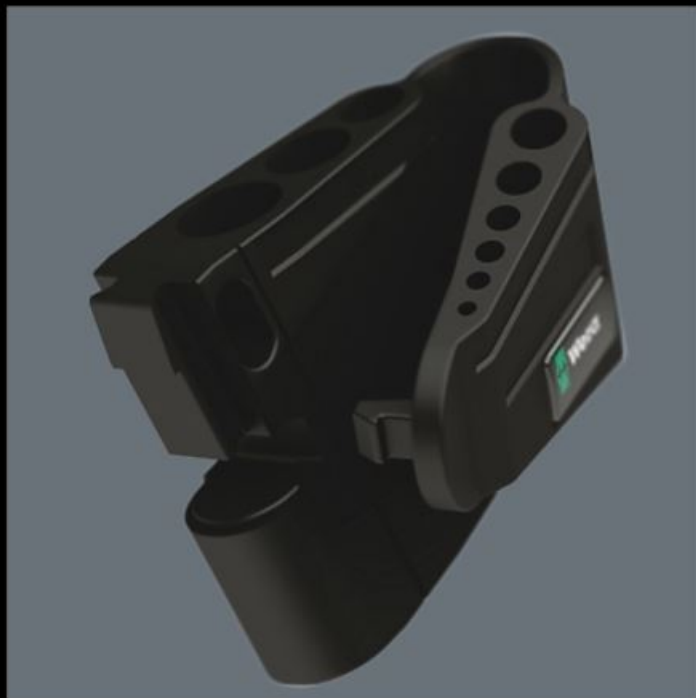


Demagnetising



Size identification

The size of each L-keys has been engraved by a laser. In addition SPKL L-keys have a colour coding according to sizes – for simple and rapid accessing of the required tool. Making it easy to find the right tool.



Secure hold and easy removal

The wear-resistant clip material ensures that the L-keys are securely held yet are easy to remove.