

Datasheet

**RS Pro Black Brass, Fibreglass Reinforced Nylon
Concealed Fixings Matte Handle, 168mm x 58mm x 29mm
150mm**

RS Stock No: **456-513**



Product Details

RS Pro drawer handle measures 168 x 58 x 29 mm. This handle in black colour, is made of brass and fibreglass reinforced nylon with matte finishing for added durability. The fixing centres are 150 mm apart.

Features and Benefits

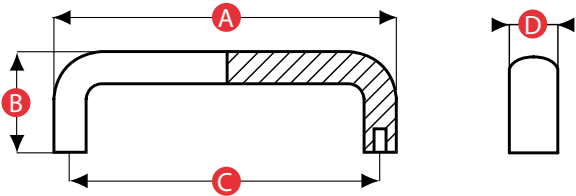
- Black thermoplastic non chip material
- Threaded brass inserts
- Durable construction



Specifications:

| | |
|-------------------|------------------------------------|
| Colour | Black |
| Concealed Fixings | Yes |
| Finish | Matte |
| Insert Material | Brass |
| Material | Brass, Fibreglass Reinforced Nylon |
| Thread Type | M8 |
| Fixing Centres | 150 mm |
| Height | 58 mm |
| Length | 168 mm |
| Width | 29 mm |
| | |

Bridge Handle Model 07 - Nylon - Concealed



| PATTERN | PART NO. | A | B | C | D | THREAD SIZE | WEIGHT (g) |
|---------|----------|-----|------|-----|----|-------------|------------|
| 65094 | 456551 | 107 | 40.5 | 94 | 20 | M5 | 42.9 |
| 65117 | 456557 | 134 | 50 | 117 | 25 | M6 | 84.5 |
| 65120 | 456563 | 137 | 50 | 120 | 25 | M6 | 86.5 |
| 65132 | 456529 | 148 | 50 | 132 | 25 | M6 | 92.5 |
| 65150 | 456513 | 168 | 58 | 150 | 29 | M8 | 128.1 |
| 65179 | 456523 | 197 | 58 | 179 | 29 | M8 | 286.0 |

Material: 15% glass filled nylon (PA6)
 Insert Material: Brass
 Standard Colour: Black
 Available colours: A wide range of RAL colours can be produced - MOQs apply

All dimensions are in mm (unless otherwise stated) and are approximate. All weights are in grams and are approximate.