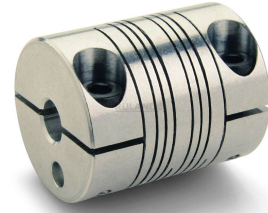
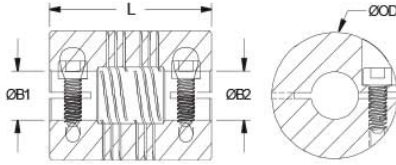




PCR16-10MM-3/8"-A

Ruland PCR16-10MM-3/8"-A, 10mm x 3/8" Four Beam Coupling, Aluminum, Clamp Style, 1.000" (25.4mm) OD, 1.250" (31.8mm) Length



Description

Ruland PCR16-10MM-3/8"-A is a clamp style four beam coupling with 10mm x 0.375" bores, 1.000" (25.4mm) OD, and 1.250" (31.8mm) length. It is machined from a single piece of material and feature two sets of two spiral cuts. This gives it higher torque capacity, lower windup, and larger body sizes than single beam couplings. PCR16-10MM-3/8"-A is zero-backlash and has a balanced design for reduced vibration at high speeds of up to 6,000 RPM. This four beam spiral coupling is zero-backlash and has a balanced design for reduced vibration at high speeds of up to 6,000 RPM. All hardware is metric and tests beyond DIN 912 12.9 standards for maximum torque capabilities. PCR16-10MM-3/8"-A is made from 7075 aluminum for lightweight and low inertia. It is machined from bar stock that is sourced exclusively from North American mills and RoHS3 and REACH compliant. PCR16-10MM-3/8"-A is manufactured in our Marlborough, MA factory under strict controls using proprietary processes.

Product Specifications

Bore (B1)	10 mm	Small Bore (B2)	0.375 in
Shaft Penetration B1	0.579 in & lpar; 14.7 mm)	Shaft Penetration B2	0.579 in & lpar; 14.7 mm)
Outer Diameter (OD)	1.000 in & lpar; 25.4 mm)	Bore Tolerance	+0.001 in / -0.000 in & lpar; +0.025 mm / -0.000 mm)
Length (L)	1.250 in & lpar; 31.8 mm)	Cap Screw	M4
Screw Material	Alloy Steel	Hex Wrench Size	3.0 mm
Screw Finish	Black Oxide	Seating Torque	4.6 Nm
Number of Screws	2 ea	Static Torque	30.0 lb-in & lpar; 3.39 Nm)
Angular Misalignment	3°	Dynamic Torque Non-Reversing	15 lb-in & lpar; 1.70 Nm)
Parallel Misalignment	0.015 in & lpar; 0.38 mm)	Dynamic Torque Reversing	7.5 lb-in & lpar; 0.85 Nm)
Axial Motion	0.010 in & lpar; 0.25 mm)	Torsional Stiffness	0.203 Deg/lb-in & lpar; 1.80 Deg/Nm)
Moment of Inertia	0.0116 lb-in ² , 3.394 x10 ⁻⁶ kg-m ²	Maximum Speed	6,000 RPM
Material Specification	7075-T651 Extruded and Drawn Aluminum Bar	Temperature	-40°F to 225°F & lpar; -40°C to 107°C)
Finish Specification	Bright	Manufacturer	Ruland Manufacturing
Country of Origin	USA	Weight (lbs.)	0.0765
Recommended Shaft Tolerance	+0.0000 / -0.0005 " & lpar; +0.000 / -0.013 mm)		
Note 1	Torque ratings are at maximum misalignment.		
Note 2	Performance ratings are for guidance only. The user must determine suitability for a particular application.		
Note 3	Torque ratings for the couplings are based on the physical limitations/failure point of the machined beams. Under normal/typical conditions the hubs are capable of holding up to the rated torque of the machined beams. In some cases, especially when the smallest standard bores are used or where shafts are undersized, slippage on the shaft is possible below the rated torque of the machined beams. Keyways are available to provide additional torque capacity in the shaft/hub connection when required. Please consult technical support for more assistance.		
Prop 65	⚠️ WARNING This product can expose you to the chemical Ethylene Thiourea, known to the State of California to cause cancer and birth defects or other reproductive harm. For more information go to www.P65Warnings.ca.gov .		

Installation Instructions

1. Align the bores of the PCR16-10MM-3/8"-A four beam coupling on the shafts that are to be joined and determine if the misalignment parameters are within the limits of the coupling. (Angular Misalignment: 3°, Parallel Misalignment: 0.015 in (0.38 mm), Axial Motion: 0.010 in (0.25 mm))
2. Fully tighten the M4 screw on one hub to the recommended seating torque of 4.6 Nm using a 3.0 mm hex torque wrench.
3. Before tightening the screws on the second hub, rotate the coupling by hand to allow it to reach its free

length.

4. Tighten the screws on the second hub to the recommended seating torque. Make sure the coupling remains axially relaxed and the misalignment angle remains centered along the length of the coupling.
 5. The shafts may extend into the relieved portion of the bore as long as it does not exceed the shaft penetration length of 0.579 in (14.7 mm).
-