

## Base strip - MDSTB 2,5/13-G1-5,08 - 1762473

Please be informed that the data shown in this PDF Document is generated from our Online Catalog. Please find the complete data in the user's documentation. Our General Terms of Use for Downloads are valid (<http://phoenixcontact.com/download>)



Header, Nominal current: 10 A, Rated voltage (III/2): 320 V, Number of positions: 13, Pitch: 5.08 mm, Color: green, Contact surface: Tin, Mounting: Soldering, In combination with MVSTB or FKCV plug components, both an MVSTBW (or FKCVW) and an MVSTBR plug (or FKCVR) must be used. Combination with TMSTBP plug components is not possible!


The figure shows a 10-pos. version with 20 contacts

### Why buy this product

- MDSTBW 2,5/...-G with stand-off
- G1 types without offset levels, for flush installation on the front of devices
- Add-on ejectors for high-pos. connectors should be mounted to the left and right



### Key commercial data

|                                      |   |
|--------------------------------------|---|
| Packing unit                         | 50 pc   |
| GTIN                                 | <br>4 017918 031077 |
| Weight per Piece (excluding packing) | 20.3 g  |
| Custom tariff number                 | 85366990  |
| Country of origin                    | Greece  |

### Technical data

#### Dimensions

|                |          |
|----------------|----------|
| Length         | 22 mm    |
| Pitch          | 5.08 mm  |
| Dimension a    | 60.96 mm |
| Pin dimensions | 1 x 1 mm |
| Hole diameter  | 1.4 mm   |

#### General

|                             |                 |
|-----------------------------|-----------------|
| Range of articles           | MDSTB 2,5/..-G1 |
| Insulating material group   | I               |
| Rated surge voltage (III/3) | 4 kV            |
| Rated surge voltage (III/2) | 4 kV            |
| Rated surge voltage (II/2)  | 4 kV            |

## Base strip - MDSTB 2,5/13-G1-5,08 - 1762473

### Technical data

#### General

|   |        |
|---|--------|
| Rated voltage (III/3)                   | 250 V  |
| Rated voltage (III/2)                   | 320 V  |
| Rated voltage (II/2)                    | 630 V  |
| Connection in acc. with standard        | EN-VDE |
| Nominal current I <sub>N</sub>          | 10 A   |
| Maximum load current                    | 10 A   |
| Insulating material                     | PA     |
| Inflammability class according to UL 94 | V0     |
| Color                                   | green  |
| Number of positions                     | 13     |

### Classifications

#### eCl@ss

|            |          |
|------------|----------|
| eCl@ss 4.0 | 272607xx |
| eCl@ss 4.1 | 27260701 |
| eCl@ss 5.0 | 27260701 |
| eCl@ss 5.1 | 27260701 |
| eCl@ss 6.0 | 27260704 |
| eCl@ss 7.0 | 27440402 |
| eCl@ss 8.0 | 27440402 |

#### ETIM

|          |          |
|----------|----------|
| ETIM 3.0 | EC001121 |
| ETIM 4.0 | EC002637 |
| ETIM 5.0 | EC002637 |

#### UNSPSC

|               |          |
|---------------|----------|
| UNSPSC 6.01   | 30211810 |
| UNSPSC 7.0901 | 39121409 |
| UNSPSC 11     | 39121409 |
| UNSPSC 12.01  | 39121409 |
| UNSPSC 13.2   | 39121409 |

### Approvals

#### Approvals

---

#### Approvals

CSA / UL Recognized / VDE Gutachten mit Fertigungsüberwachung / cUL Recognized / IECCEB Scheme / CCA / EAC / cULus Recognized

---

# Base strip - MDSTB 2,5/13-G1-5,08 - 1762473

## Approvals

Ex Approvals

Approvals submitted

### Approval details

|                    |       |       |
|--------------------|-------|-------|
| CSA                |       |       |
|                    | B     | D     |
| Nominal current IN | 10 A  | 10 A  |
| Nominal voltage UN | 300 V | 300 V |

|                    |       |       |
|--------------------|-------|-------|
| UL Recognized      |       |       |
|                    | B     | D     |
| Nominal current IN | 15 A  | 10 A  |
| Nominal voltage UN | 300 V | 300 V |

|   |       |
|---|-------|
| VDE Gutachten mit Fertigungsüberwachung |       |
| Nominal current IN                      | 10 A  |
| Nominal voltage UN                      | 250 V |

|                    |       |       |
|--------------------|-------|-------|
| cUL Recognized     |       |       |
|                    | B     | D     |
| Nominal current IN | 15 A  | 10 A  |
| Nominal voltage UN | 300 V | 300 V |


|                    |       |
|--------------------|-------|
| IECEE CB Scheme    |       |
| Nominal current IN | 10 A  |
| Nominal voltage UN | 250 V |

## Base strip - MDSTB 2,5/13-G1-5,08 - 1762473

### Approvals

|                                |       |
|--------------------------------|-------|
| CCA                            |       |
| Nominal current I <sub>N</sub> | 10 A  |
| Nominal voltage U <sub>N</sub> | 250 V |

|     |
|-----|
| EAC |
|-----|

|  |
|--|
| cULus Recognized  |
|--|

### Accessories

#### Accessories

#### Coding element

Coding star - CR-MSTB - 1734401



Coding section, inserted into the recess in the header or the inverted plug, red insulating material

#### Filler plug

Accessories - MSTB-BL - 1755477



Keying cap, for forming sections, plugs onto header pin, green insulating material

#### Labeled terminal marker

Marker card - SK 5,08/3,8:FORTL.ZAHLEN - 0804293



Marker card, Card, white, labeled, Horizontal: Consecutive numbers 1 - 10, 11 - 20, etc. up to 91 - (99)100, Mounting type: Adhesive, for terminal block width: 5.08 mm, Lettering field: 5.08 x 3.8 mm

### Additional products

## Base strip - MDSTB 2,5/13-G1-5,08 - 1762473

### Accessories

Printed-circuit board connector - FRONT-MSTB 2,5/13-ST-5,08 - 1777390

Plug component, Nominal current: 12 A, Rated voltage (III/2): 320 V, Number of positions: 13, Pitch: 5.08 mm, Connection method: Screw connection, Color: green, Contact surface: Tin



Printed-circuit board connector - FKCVR 2,5/13-ST-5,08 - 1874060

Plug component, Nominal current: 12 A, Rated voltage (III/2): 320 V, Number of positions: 13, Pitch: 5.08 mm, Connection method: Spring-cage connection, Color: green, Contact surface: Tin



Printed-circuit board connector - FKC 2,5/13-ST-5,08 - 1873168

Plug component, Nominal current: 12 A, Rated voltage (III/2): 320 V, Number of positions: 13, Pitch: 5.08 mm, Connection method: Spring-cage connection, Color: green, Contact surface: Tin



Printed-circuit board connector - SMSTB 2,5/13-ST-5,08 - 1826393

Plug component, Nominal current: 12 A, Rated voltage (III/2): 320 V, Number of positions: 13, Pitch: 5.08 mm, Connection method: Screw connection, Color: green, Contact surface: Tin



Printed-circuit board connector - MSTBC 2,5/13-STZ-5,08 - 1809611

Plug component, Nominal current: 12 A, Rated voltage (III/2): 320 V, Number of positions: 13, Pitch: 5.08 mm, Connection method: Crimp connection, Color: green, Corresponding female crimp contacts with current [A] and conductor cross section range [mm<sup>2</sup>] data: 10A/MSTBC-MT 0,5-1,0 (3190564); 10A/MSTBC-MT 0,5-1,0 BA (3190645); 12A/MSTBC-MT 1,5-2,5 (3190551); 12A/MSTBC-MT 1,5-2,5 BA (3190658). BA = Bandkontakte



## Base strip - MDSTB 2,5/13-G1-5,08 - 1762473

### Accessories

#### Printed-circuit board connector - MSTBC 2,5/13-ST-5,08 - 1808926



Plug component, Nominal current: 12 A, Rated voltage (III/2): 320 V, Number of positions: 13, Pitch: 5.08 mm, Connection method: Crimp connection, Color: green, Corresponding female crimp contacts with current [A] and conductor cross section range [mm<sup>2</sup>] data: 10A/MSTBC-MT 0,5-1,0 (3190564); 10A/MSTBC-MT 0,5-1,0 BA (3190645); 12A/MSTBC-MT 1,5-2,5 (3190551); 12A/MSTBC-MT 1,5-2,5 BA (3190658). BA = Bandkontakte

#### Printed-circuit board connector - MVSTBW 2,5/13-ST-5,08 - 1792867



Plug component, Nominal current: 12 A, Rated voltage (III/2): 320 V, Number of positions: 13, Pitch: 5.08 mm, Connection method: Screw connection, Color: green, Contact surface: Tin

#### Printed-circuit board connector - MVSTBR 2,5/13-ST-5,08 - 1792359



Plug component, Nominal current: 12 A, Rated voltage (III/2): 320 V, Number of positions: 13, Pitch: 5.08 mm, Connection method: Screw connection, Color: green, Contact surface: Tin

#### Base strip - IC 2,5/13-G-5,08 - 1786514



Header, Nominal current: 12 A, Rated voltage (III/2): 320 V, Number of positions: 13, Pitch: 5.08 mm, Color: green, Contact surface: Tin, Mounting: Soldering

#### Printed-circuit board connector - FKCT 2,5/13-ST-5,08 - 1902220

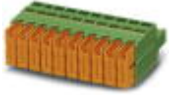


Plug component, Nominal current: 12 A, Rated voltage (III/2): 320 V, Number of positions: 13, Pitch: 5.08 mm, Connection method: Spring-cage connection, Color: green, Contact surface: Tin

## Base strip - MDSTB 2,5/13-G1-5,08 - 1762473

### Accessories

Printed-circuit board connector - QC 1/13-ST-5,08 - 1883815



Plug component, Nominal current: 10 A, Rated voltage (III/2): 630 V, Number of positions: 13, Pitch: 5.08 mm, Connection method: Insulation displacement connection QUICKON, Color: green, Contact surface: Tin

---

Base strip - ICV 2,5/13-G-5,08 - 1786051



Header, Nominal current: 12 A, Rated voltage (III/2): 320 V, Number of positions: 13, Pitch: 5.08 mm, Color: green, Contact surface: Tin, Mounting: Soldering

---

Printed-circuit board connector - MSTBT 2,5/13-ST-5,08 - 1781098



Plug component, Nominal current: 12 A, Rated voltage (III/2): 320 V, Number of positions: 13, Pitch: 5.08 mm, Connection method: Screw connection, Color: green, Contact surface: Tin

---

Printed-circuit board connector - MSTBP 2,5/13-ST-5,08 - 1769120



Plug component, Nominal current: 12 A, Rated voltage (III/2): 320 V, Number of positions: 13, Pitch: 5.08 mm, Connection method: Screw connection, Color: green, Contact surface: Tin

---

Printed-circuit board connector - MSTB 2,5/13-ST-5,08 - 1757129



Plug component, Nominal current: 12 A, Rated voltage (III/2): 320 V, Number of positions: 13, Pitch: 5.08 mm, Connection method: Screw connection, Color: green, Contact surface: Tin

---

## Base strip - MDSTB 2,5/13-G1-5,08 - 1762473

### Accessories

Printed-circuit board connector - MSTB 2,5/13-STZ-5,08 - 1764277



Plug component, Nominal current: 12 A, Rated voltage (III/2): 320 V, Number of positions: 13, Pitch: 5.08 mm, Connection method: Screw connection, Color: green, Contact surface: Tin

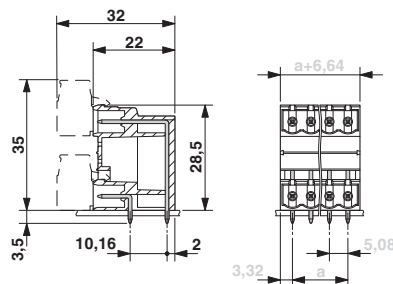
Printed-circuit board connector - FKCVW 2,5/13-ST-5,08 - 1873760



Plug component, Nominal current: 12 A, Rated voltage (III/2): 320 V, Number of positions: 13, Pitch: 5.08 mm, Connection method: Spring-cage connection, Color: green, Contact surface: Tin

### Drawings

Dimensioned drawing



# Base strip - MDSTB 2,5/13-G1-5,08 - 1762473

Drilling diagram

