

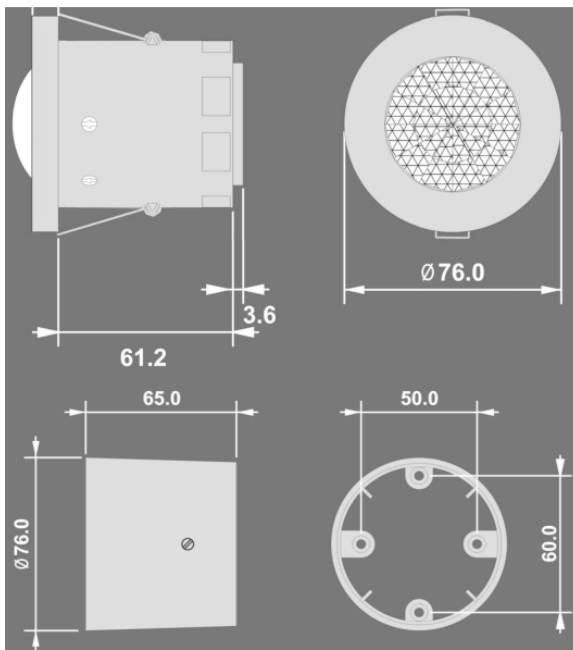
## Datasheet

### RS Ceiling PIR Detector, PIR, Flush Mount, 220 → 240 V, 76mm Diameter

RS Stock 742-4131

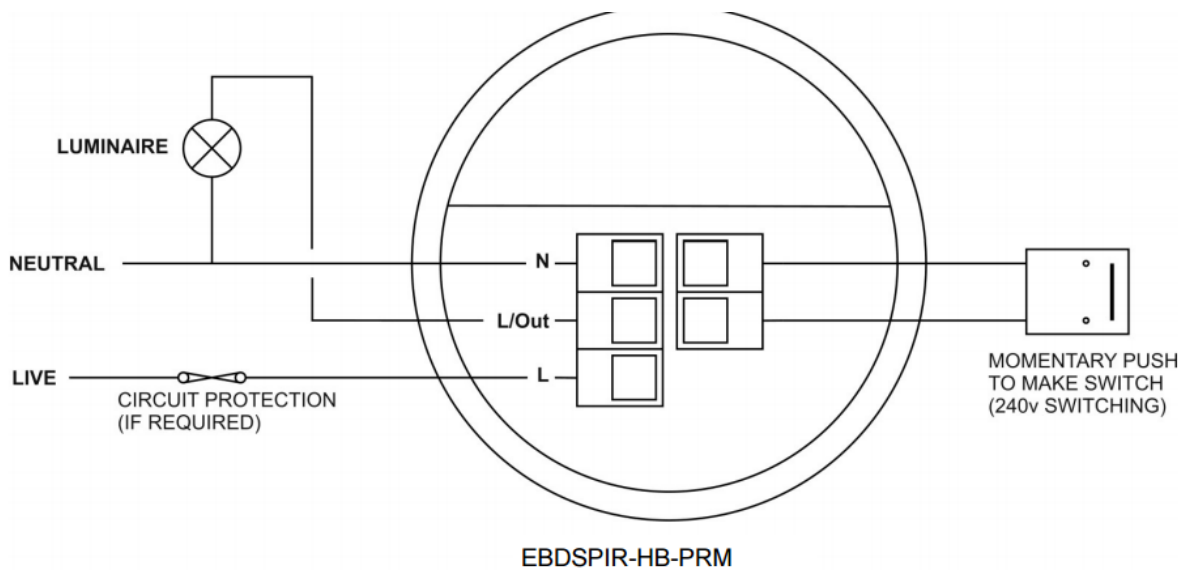



### Dimensions (mm):



## Description

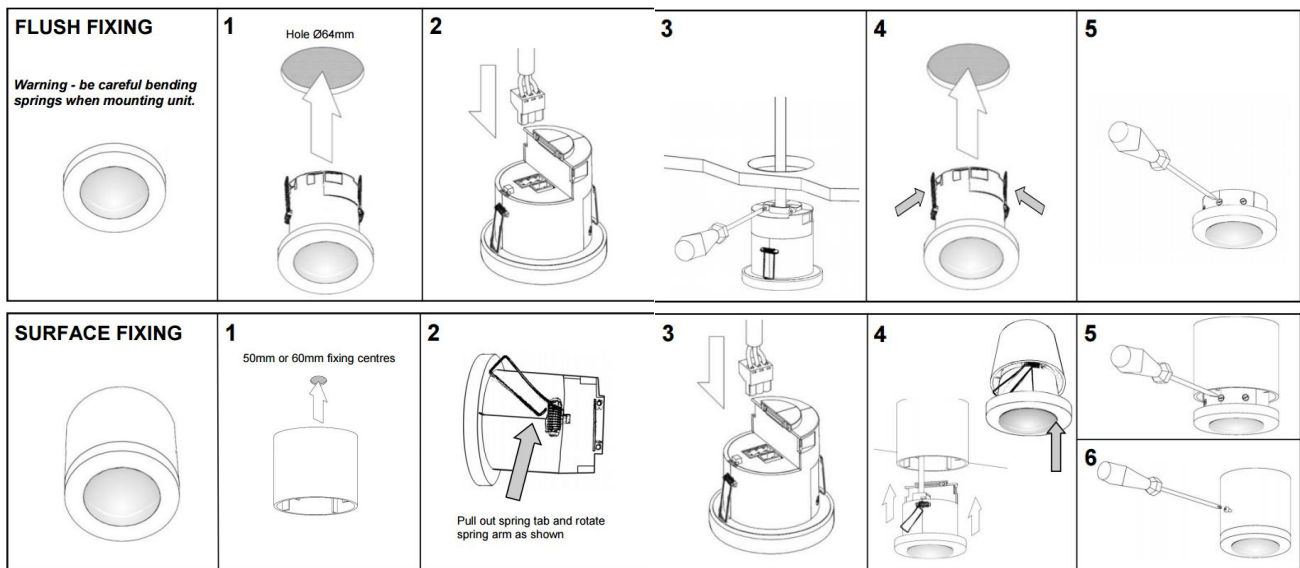
The EBDSPiR-HB-PRM PIR (passive infrared) detector provides automatic control of lighting loads with optional manual control. This product has been specifically designed for the detection of movement in high bay lighting applications such as warehouses and factories. It can be used on incandescent, fluorescent and compact fluorescent lighting, and has the added benefit of being able to connect an external switch.



<b>SUPPLY VOLTAGE</b>	220-240 Volts AC 50 Hz
<b>TIME OUT PERIOD</b>	Adjustable 10 seconds to 99 minutes
<b>LIGHT LEVEL</b>	Light to dark
<b>TERMINAL CAPACITY</b>	2.5mm <sup>2</sup>
<b>MATERIAL</b>	Flame retardant ABS
<b>TYPE</b>	Class 2
<b>TEMPERATURE</b>	-10°C to 35°C
<b>CONFORMITY</b>	EMC-89/336/EEC 
	LVD-73/23/EEC



1. Wire the products using the diagram opposite.
2. To switch from more than one position simply wire two or more units in parallel using the Live, Neutral and Switched Live wires only.
3. Position the sensor according to the detection pattern shown in section
4. Ensure that the marks on the sensor line up with the direction of the aisle.
5. Avoid direct sunlight entering the sensor.
6. Do not site within 1m of forced air heating or ventilation.
7. Do not fix to a vibrating surface.
8. Mount using one of the two options overleaf.
9. Connect the sensor via the terminal blocks. Live supply to the L terminal; load to the L/OUT terminal; Neutral to the N terminal on the green terminal block. External switch connections to the switch terminal.
10. Use a small screwdriver to set the LUX level adjuster fully anticlockwise, the time to minimum (fully clockwise) and the sensitivity to maximum (fully anticlockwise).
11. Power the unit up—the load should come on immediately.
12. Vacate the room or remain very still and wait for the load to switch off (should take no more than 2 minutes).
13. Check that the load switches on when movement is detected.
14. The LUX thumbwheel determines the ambient light level at which the lights turn on.
15. Select the time using the adjuster, fully anticlockwise is the maximum.
16. Absence detection to use absence detection a retractive (momentary) switch must be connected between the 2 terminals on the diagram. Note that this will be switching mains voltage.
17. The unit ships with presence detection as default. To change to absence detection, press and release the external switch 5 times within the first minute of power up. The LED will turn on solid for 30 seconds to indicate absence mode has been selected.
18. To change back to presence detection, repeat the above procedure—the LED will flash for 30 seconds to indicate presence mode has been selected.



**1. Detector Parameters (factory default in brackets):**

- 1.1 **Time adjustment** (20 min) 10 seconds to 99 minutes time delay (select 0 for 10 second delay – use for commissioning only).
- 1.2 **Sensitivity On** (9) Sensitivity level when the detector is already operational adjustable between 1 (min.) and 9 (max.)
- 1.3 **Sensitivity Off** (9) Sensitivity level for switching the detector on – adjustable between 1 (min.) and 9 (max.).
- 1.4 **Power Up On** (Y) Select No for a 30 second delay on start up. If Yes is selected, there will be no delay on start up and the detector will always power up detecting.
- 1.5 **Walk Test** (N) An LED behind the detector lens will flash to show movement has been detected (use for commissioning).
- 1.6 **Disable Detector** (N) Disables detection. In this mode the detector acts as a photocell only. The lux preset determines the light level at which the output is turned on. The sensitivity preset determines the light level at which the output turns off. The time preset prevents nuisance tripping and in this mode is adjustable between 0-13 minutes.
- 1.7 **Factory Default** Restores factory default settings.

**2. Switching functions (factory default in brackets):**

- 2.1 **Presence detection** (default) Auto switch on with detection, auto off after movement ceases and time delay ends.
- 2.2 **Absence detection** Manual switch on, auto off after movement ceases and time delay ends.
- 2.3 **Switch level on** (9) Lux level setting to prevent the luminaires being switched on if the ambient light level is sufficient (adjustable between 1 and 9). The luminaires will always be switched on at level 9.
- 2.4 **Switch level off** (9) Lux level setting to switch the luminaires off during occupancy if the ambient light level goes above the setting (adjustable between 1 and 9). Level 9 will always keep the lights on. This setting can be used for “window row switching”.

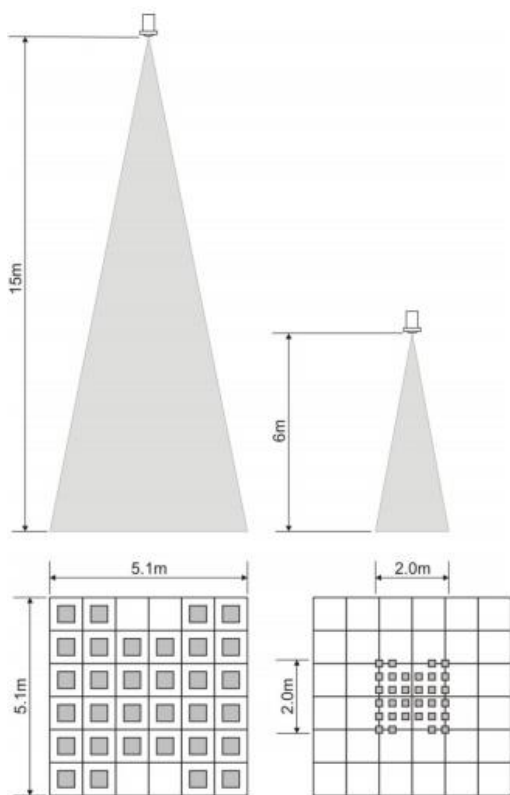
**2. Switching functions (factory default in brackets):**

- 2.1 Presence detection (default)** Auto switch on with detection, auto off after movement ceases and time delay ends.
- 2.2 Absence detection** Manual switch on, auto off after movement ceases and time delay ends.
- 2.3 Switch level on (9)** Lux level setting to prevent the luminaires being switched on if the ambient light level is sufficient (adjustable between 1 and 9). The luminaires will always be switched on at level 9.
- 2.4 Switch level off (9)** Lux level setting to switch the luminaires off during occupancy if the ambient light level goes above the setting (adjustable between 1 and 9). Level 9 will always keep the lights on. This setting can be used for "window row switching".

**3 User Menu**

DD-LCDHS-LR user menu:

- 3.1 Lux up** Can only be used with the set button—see 3.6.
- 3.2 Lux down** Can only be used with the set button—see 3.6.
- 3.3 Override on** Permanently overrides the luminaire output on.
- 3.4 Override off** Permanently overrides the luminaire output off.
- 3.5 Cancel** Cancels the on or off override, returning the detector to normal operation.
- 3.6 Set** Send before using lux up or lux down. The **switch level on** (see 2.3) can then be adjusted using the lux up or lux down buttons.



Height	Range
15m	5.1m x 5.1m
12m	4.0m x 4.0m
10m	3.4m x 3.4m
8m	2.7m x 2.7m
6m	2.0m x 2.0m

