

# Housing - HC-B 10-KMQ-N-O1STM20 - 1460151

Please be informed that the data shown in this PDF Document is generated from our Online Catalog. Please find the complete data in the user's documentation. Our General Terms of Use for Downloads are valid (<http://phoenixcontact.com/download>)



HEAVYCON B10 coupling housing, with double locking latch, height: 62 mm, with 1 x M20 thread, straight cable outlet



## Key commercial data

Packing unit	10 pc
GTIN	 4 046356 695404
Weight per Piece (excluding packing)	22.22 g
Custom tariff number	85389099
Country of origin	Germany

## Technical data

### Dimensions

Height	62 mm
Width	43 mm
Length	73 mm

### Ambient conditions

Degree of protection of housing (IP)	IP65
Ambient temperature (operation)	-40 °C ... 125 °C

### General

Note	For contact inserts HC-B10, BB18, DD42, M, K8/24
Type	B10
Housing type	Coupling housings
Locking type	With double locking latch
No. of cable outlets	1
Cable exit	Straight
Screw connection	none
Type of the screw connection	1x M20
Housing material	Aluminum die-cast

# Housing - HC-B 10-KMQ-N-O1STM20 - 1460151

## Technical data

### General

Housing surface material	Powder-coated, gray
Seal material	NBR
Material lock	High-grade steel, handle: PA-GF
Material grip body interlock	PA-GF

## Classifications

### eCl@ss

eCl@ss 4.0	27140816
eCl@ss 4.1	27140816
eCl@ss 5.0	27143424
eCl@ss 5.1	27143424
eCl@ss 6.0	27143424
eCl@ss 7.0	27440209
eCl@ss 8.0	27440202

### ETIM

ETIM 3.0	EC000437
ETIM 4.0	EC000437
ETIM 5.0	EC000437

### UNSPSC

UNSPSC 6.01	31261502
UNSPSC 7.0901	31261502
UNSPSC 11	31261502
UNSPSC 12.01	31261502
UNSPSC 13.2	31261502

## Approvals

### Approvals

---

Approvals

EAC

---

Ex Approvals

---

Approvals submitted

---

## Housing - HC-B 10-KMQ-N-O1STM20 - 1460151

### Approvals

Approval details

EAC
-----

### Accessories

#### Accessories

##### Extension adapter

Extension adapter - ENLAR-M-KV-M20/M25 - 1647666



Step-up adapter, M20 to M25, including O-ring

---

#### Full screw connection

Cable gland - G-INS-M20-S68N-PNES-GY - 1411125



Cable gland, Cable gland material: Polyamide 6, External cable diameter 6 mm ... 12 mm, Shielding: No, Connecting thread: M20, Color: silver grey

---

Cable gland - G-INS-M20-S68N-PNES-BK - 1411133



Cable gland, Cable gland material: Polyamide 6, External cable diameter 6 mm ... 12 mm, Shielding: No, Connecting thread: M20, Color: jet black

---

Cable gland - G-INS-M20-S68N-NNES-S - 1411163



Cable gland, Cable gland material: Brass, nickel-plated, External cable diameter 6 mm ... 12 mm, Shielding: No, Connecting thread: M20, Color: silver

## Housing - HC-B 10-KMQ-N-O1STM20 - 1460151

### Accessories

Cable gland - HC-M-KV-M20(11-16) - 1645998



Metal screw connection up to 5 bar, thread length: 6 mm, cable diameter: 11 - 16 mm, WAF 27, screw connection: M20

---

Cable gland - G-INSEC-M20-S68N-NCRS-S - 1411189



Cable gland, Cable gland material: Brass, nickel-plated, External cable diameter 9 mm ... 13 mm, Shielding: Yes, Connecting thread: M20, Color: silver

---

Cable gland - HC-M-KV-Z-M20 - 1646146



Metal screw connection with strain relief clamp, thread length: 6 mm, cable sealing area: 7.5 - 15 mm, clamping area: 11 - 17 mm, SW 24, screw connection: M20

---

Cable gland - HC-M-KV-T-M20 - 1646188



Metal screw connection with cable bend protection and strain relief, thread length: 6 mm, cable sealing area: 7.5 - 15 mm, clamping area: 10 - 16 mm, SW 24, screw connection: M20

---

Plug for cable screw gland

Filler plugs - HC-M-BS-M20 - 1645846



Filler plug, metal, size: M20

---

Reducing adapter

## Housing - HC-B 10-KMQ-N-O1STM20 - 1460151

### Accessories

Reducing adapter - REDUC-M-KV-M20/M16 - 1647611

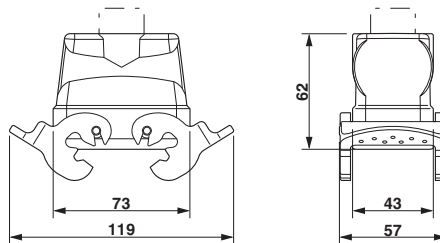


Step-down adapter, M20 to M16, including O-ring

---

### Drawings

Dimensioned drawing



Dimensional drawing