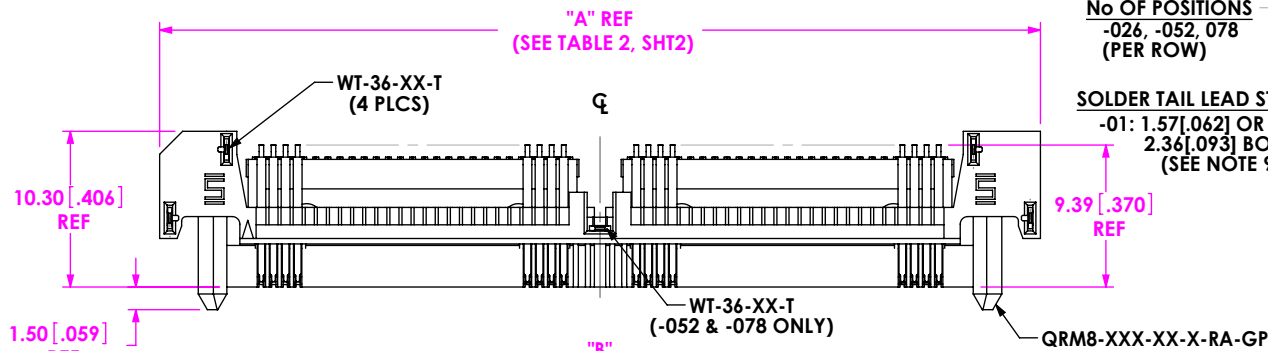


DO NOT  
SCALE FROM  
THIS PRINT



No OF POSITIONS  
-026, -052, 078  
(PER ROW)

SOLDER TAIL LEAD STYLE  
-01: 1.57[.062] OR  
2.36[.093] BOARD  
(SEE NOTE 9)

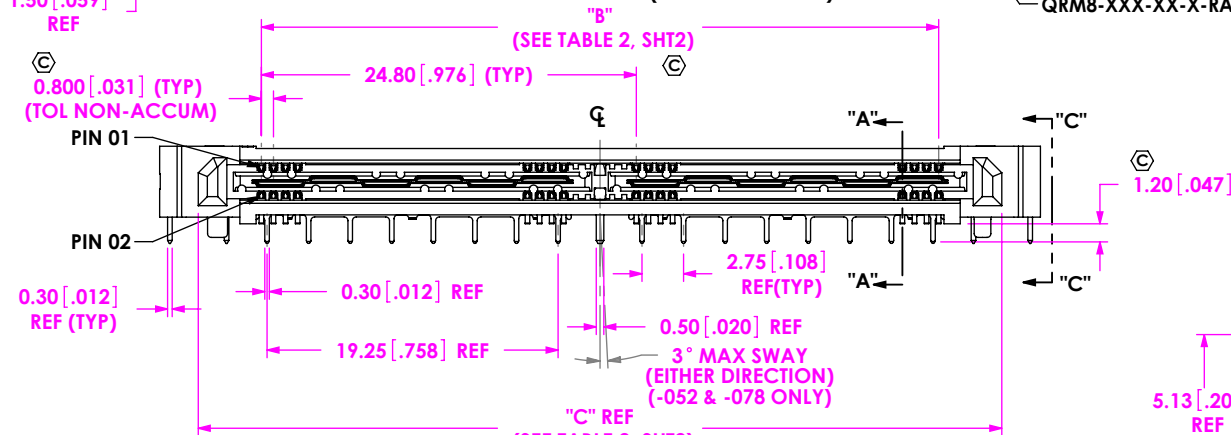
OPTION  
-K: POLYIMIDE FILM  
(NOT AVAILABLE FOR  
-026 & -078)  
(USE K-DOT-.276-.375-.005,  
SEE FIG. 2, SHT 4)  
-TR: TAPE & REEL  
(SEE NOTE 8)

GUIDE POSTS  
-GP

RIGHT ANGLE  
-RA

PLATING SPECIFICATION

-S: SELECTIVE, 30Au / 50NI MIN ON  
CONTACT, MATTE TIN ON TAIL  
(USE T-1M52-XX-S & IM-T-1G35-XX-S)  
-L: LIGHT SELECTIVE, 10Au / 50NI MIN ON  
CONTACT, MATTE TIN ON TAIL  
(USE T-1M52-XX-L & IM-T-1G35-XX-L)



PIN 01  
PIN 02

0.30 [.012] REF (TYP)

0.30 [.012] REF

2.75 [.108] REF (TYP)

0.50 [.020] REF

19.25 [.758] REF

3° MAX SWAY (EITHER DIRECTION) (-052 & -078 ONLY)

0.30 [.012] REF (TYP)

"A" REF (SEE TABLE 2, SHT2)

"B" REF (SEE TABLE 2, SHT2)

"C" REF (SEE TABLE 2, SHT2)

"D" REF (SEE TABLE 2, SHT2)

1.10 [.043] REF

5.85 [.230] REF

0.80 [.031] (TYP) (TOL NON-ACCUM)

"B" REF (SEE TABLE 2, SHT2)

"F" REF (SEE TABLE 2, SHT2)

"E" REF (SEE TABLE 2, SHT2)

1.32 [.052] REF

0.30 [.012] REF

1.30 [.051] (TYP)

1.30 REF

0.20 [.008] REF (TYP)

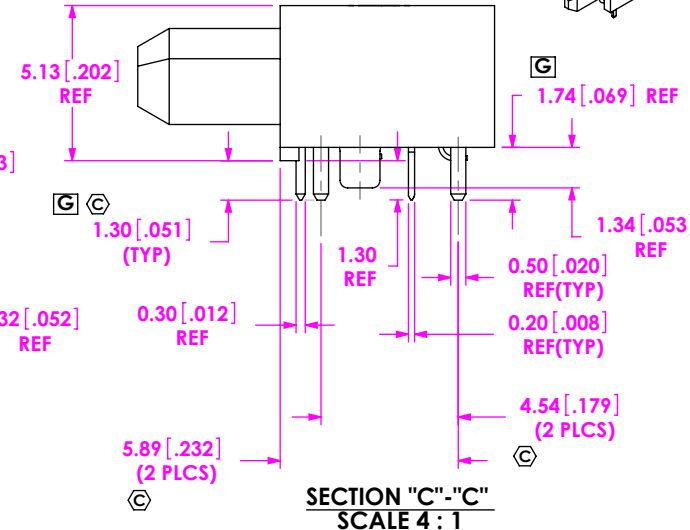
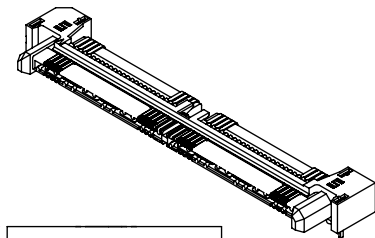
1.34 [.053] REF

0.50 [.020] REF (TYP)

4.54 [.179] (2 PLCS)

5.89 [.232] (2 PLCS)

SECTION "C"- "C" SCALE 4 : 1



LEAD STYLE	"OVER MOLDED GROUND PLANE"	"WELD TAB"
-01	IM-T-1G35-01-X	WT-36-01-T

NOTES:

1. © REPRESENTS A CRITICAL DIMENSION.
2. BURR ALLOWANCE: 0.038[.0015] MAX.
3. MINIMUM PUSHOUT FORCE: SIGNAL: 2.22N[.5 LB]. GROUND PLANE: 4.45N[1 LB].

4. MEASURE AT BEND TANGENCY.
5. MEASURE ON PINS ONLY. STANDOFFS NOT INCLUDED IN MEASUREMENT.
6. POST HEIGHT VARIATION BETWEEN ANY TWO PINS: 0.05[.002] MAXIMUM.

7. NOTE DELETED
8. PARTS TO BE PACKAGED IN TRAYS, UNLESS -TR OPTION IS SPECIFIED. -078 POSITION IS NOT AVAILABLE IN TAPE AND REEL.
9. THE -01 SOLDER TAIL LEAD STYLE CAN BE USED FOR A 1.57[.062] OR A 2.36[.093] THICK PCB AND WILL ADHERE TO IPC-A-610 HOLE FILL STANDARDS IF SAMTEC'S RECOMMENDED STENCIL APERTURE IS UTILIZED.

10. CPC'S MUST BE MEASURED BOTH ENDS OF COMB OR CONNECTOR.
11. USE INSPECTION FIXTURE # AT-2298-801-02 TO CHECK CRITICALS.

F:\DWG\MISC\Mktg\QRM8-XXX-XX-X-RA-GP-XX-MKT.SLDDRW

FIG 1  
(QRM8-052-01-X-RA-GP SHOWN)  
(SOME DETAIL REMOVED FOR CLARITY)

UNLESS OTHERWISE SPECIFIED,  
DIMENSIONS ARE IN  
MILLIMETERS [INCHES].  
TOLERANCES ARE:  
DECIMALS ANGLES  
X.X: ±0.3 [.01] 2°  
X.XX: ±0.13 [.005]  
X.XXX: ±0.051 [.0020]

PROPRIETARY NOTE

THIS DOCUMENT CONTAINS INFORMATION  
CONFIDENTIAL AND PROPRIETARY TO  
SAMTEC, INC. AND SHALL NOT BE REPRODUCED  
OR TRANSFERRED TO OTHER DOCUMENTS OR  
DISCLOSED TO OTHERS OR USED FOR ANY  
PURPOSE OTHER THAN THAT WHICH IT WAS  
OBTAINED WITHOUT THE EXPRESSED WRITTEN  
CONSENT OF SAMTEC, INC.

MATERIAL: DO NOT SCALE DRAWING  
INSULATORS: LCP  
CONTACT: PHOS BRONZE  
GROUND PLANE: PHOS BRONZE

SHEET SCALE: 2:1



520 PARK EAST BLVD, NEW ALBANY, IN 47150  
PHONE: 812-944-6733 FAX: 812-948-5047  
e-Mail info@SAMTEC.com code 55322

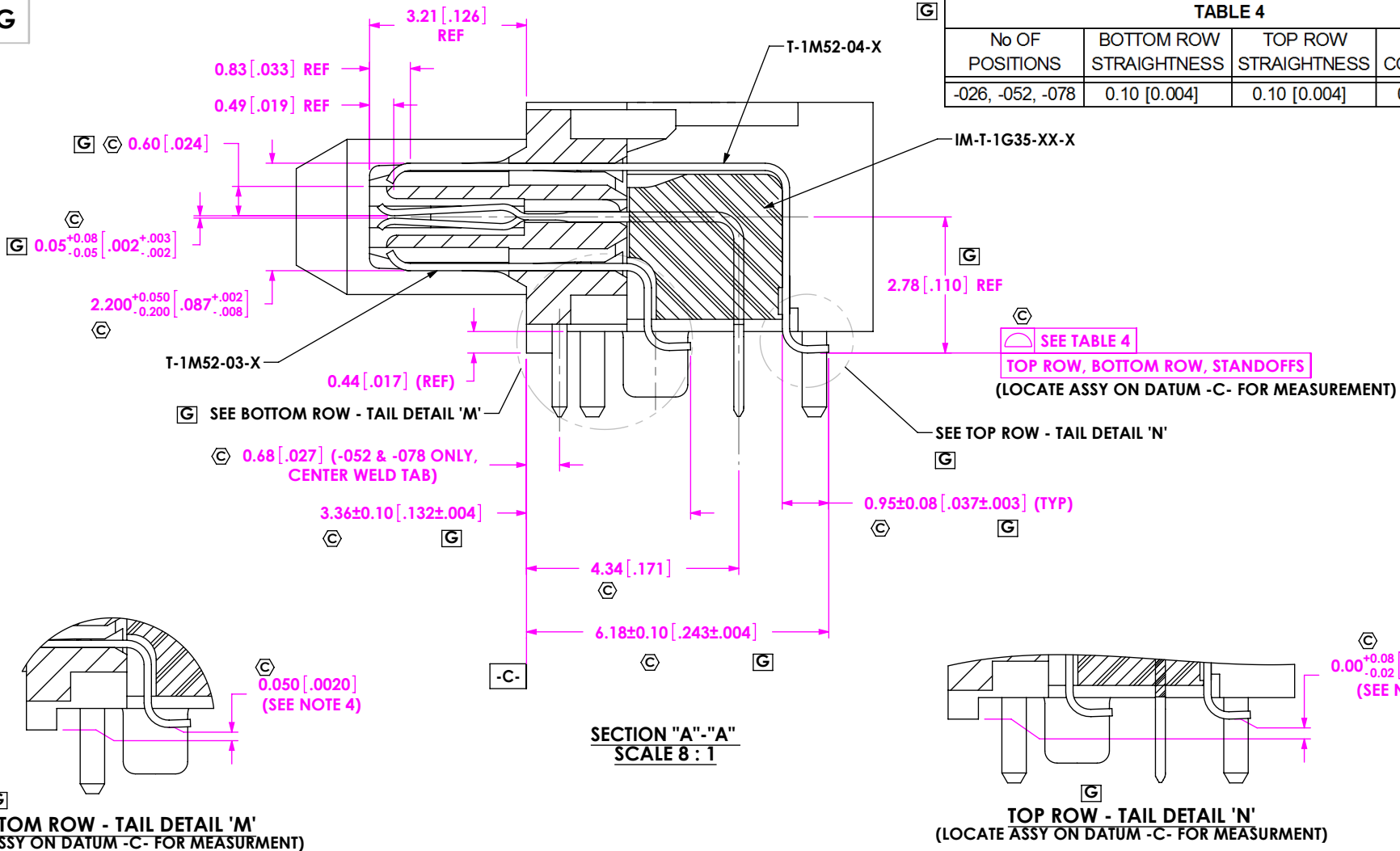
DESCRIPTION:  
0.8mm Q-RATE RIGHT ANGLE TERMINAL ASSEMBLY

DWG. NO.

QRM8-XXX-XX-X-RA-GP-XX

BY: R MUSSER 10/02/2008 SHEET 1 OF 5

TABLE 4			
No OF POSITIONS	BOTTOM ROW STRAIGHTNESS	TOP ROW STRAIGHTNESS	COPLANARITY
-026, -052, -078	0.10 [0.004]	0.10 [0.004]	0.15 [0.006]



**BOTTOM ROW - TAIL DETAIL 'M'**  
(LOCATE ASSY ON DATUM -C- FOR MEASUREMENT)

**TOP ROW - TAIL DETAIL 'N'**  
(LOCATE ASSY ON DATUM -C- FOR MEASUREMENT)

**SECTION "A"- "A"**  
**SCALE 8 : 1**

TABLE 2						
No OF POSITIONS	"A"	"B"	"C"	"D"	"E"	"F"
-026	33.46 [1.317]	20.00 [0.787]	28.35 [1.116]	25.80 [1.016]	32.11 [1.264]	24.61 [0.969]
-052	58.26 [2.294]	44.80 [1.764]	53.15 [2.093]	50.60 [1.992]	56.91 [2.240]	49.41 [1.945]
-078	83.06 [3.270]	69.60 [2.740]	77.95 [3.069]	75.40 [2.969]	81.71 [3.217]	74.21 [2.921]

**PROPRIETARY NOTE**  
THIS DOCUMENT CONTAINS INFORMATION CONFIDENTIAL AND PROPRIETARY TO SAMTEC, INC. AND SHALL NOT BE REPRODUCED OR TRANSFERRED TO OTHER DOCUMENTS OR DISCLOSED TO OTHERS OR USED FOR ANY PURPOSE OTHER THAN THAT WHICH IT WAS OBTAINED WITHOUT THE EXPRESSED WRITTEN CONSENT OF SAMTEC, INC.

DO NOT SCALE DRAWING

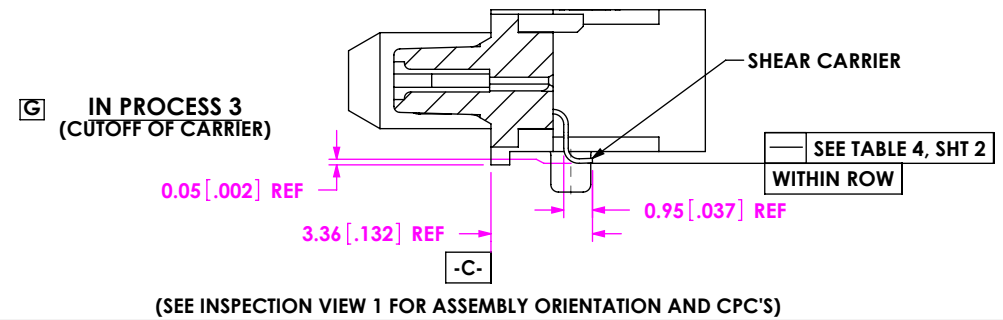
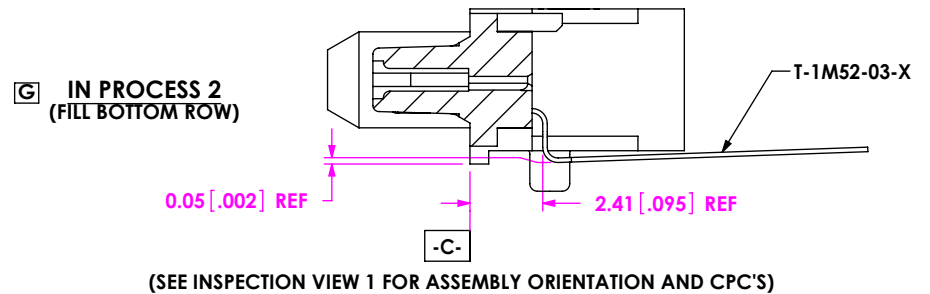
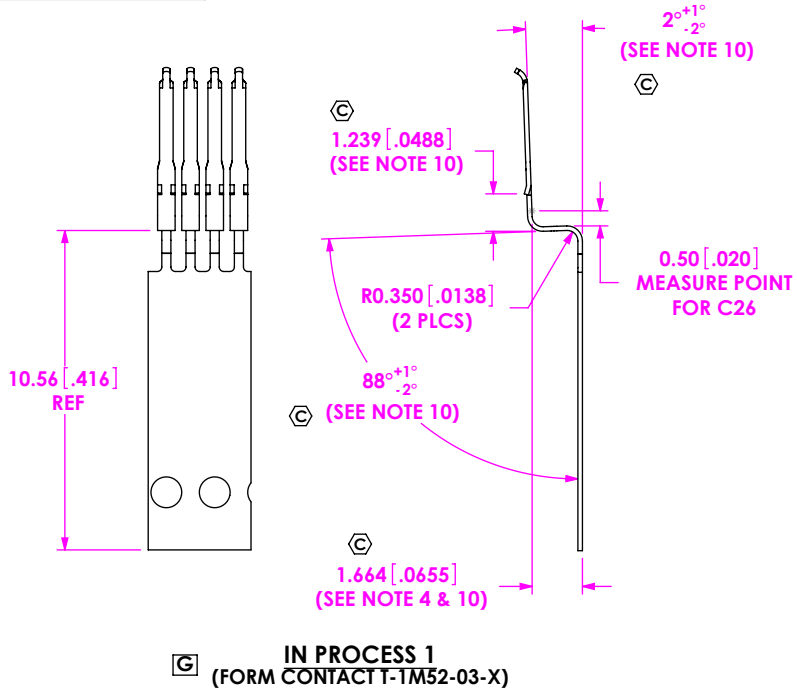
SHEET SCALE: 2:1

520 PARK EAST BLVD, NEW ALBANY, IN 47150  
PHONE: 812-944-6733 FAX: 812-948-5047  
e-Mail info@SAMTEC.com code 55322

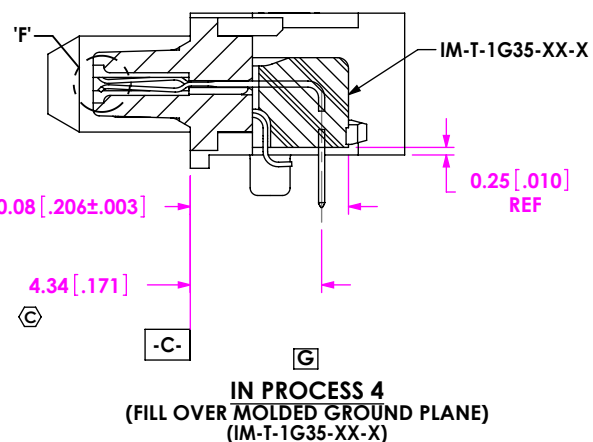
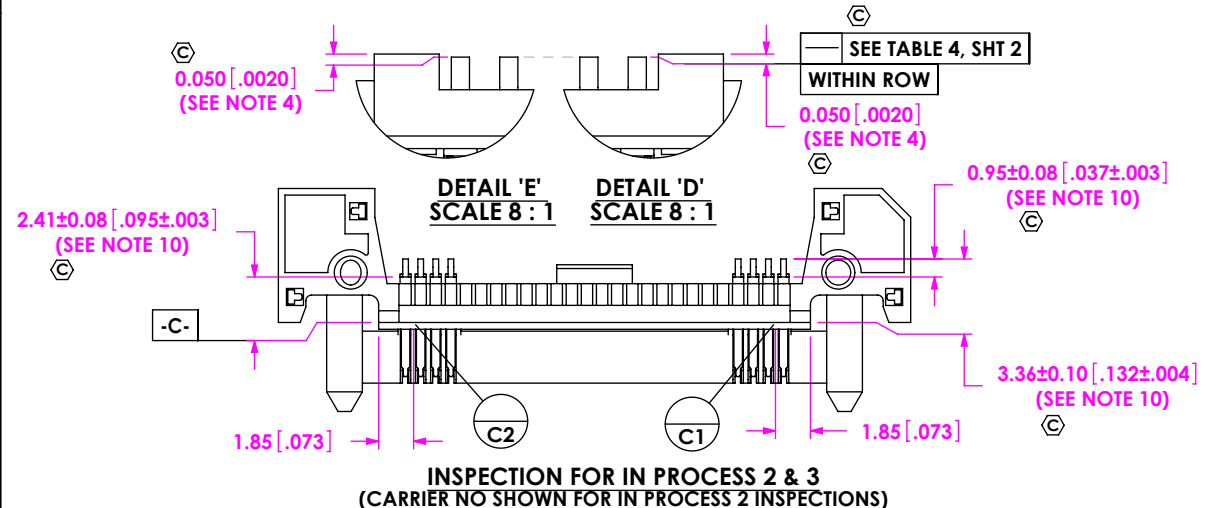
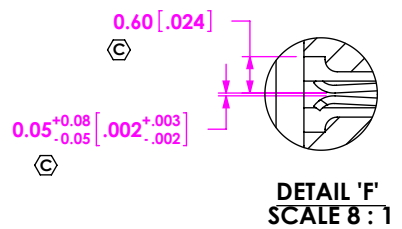
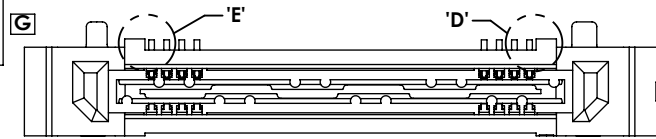
DESCRIPTION:  
**0.8mm Q-RATE RIGHT ANGLE TERMINAL ASSEMBLY**

DWG. NO.  
**QRM8-XXX-XX-X-RA-GP-XX**

BY: R MUSSER 10/02/2008 SHEET 2 OF 5



**INSPECTION VIEW 1**  
(SEE NOTE 11)



**PROPRIETARY NOTE**  
THIS DOCUMENT CONTAINS INFORMATION CONFIDENTIAL AND PROPRIETARY TO SAMTEC, INC. AND SHALL NOT BE REPRODUCED OR TRANSFERRED TO OTHER DOCUMENTS OR DISCLOSED TO OTHERS OR USED FOR ANY PURPOSE OTHER THAN THAT WHICH IT WAS OBTAINED WITHOUT THE EXPRESSED WRITTEN CONSENT OF SAMTEC, INC.

DO NOT SCALE DRAWING

SHEET SCALE: 4:1

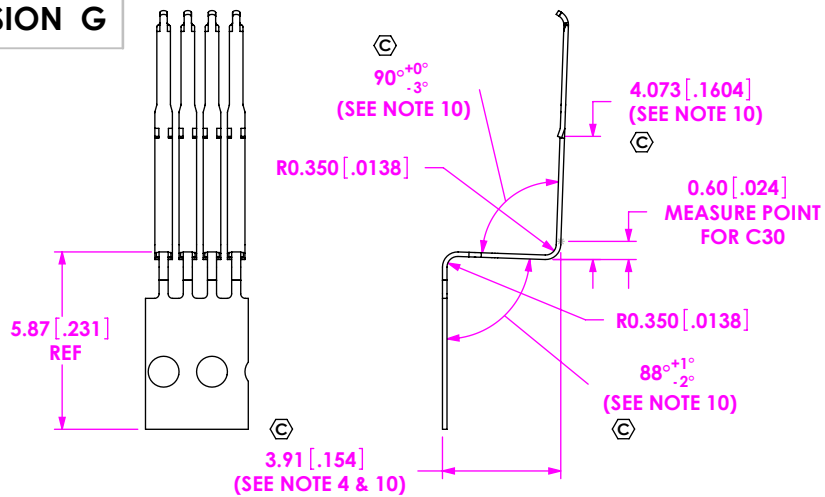
520 PARK EAST BLVD, NEW ALBANY, IN 47150  
PHONE: 812-944-6733 FAX: 812-948-5047  
e-Mail info@SAMTEC.com code 55322

DESCRIPTION:  
**0.8mm Q-RATE RIGHT ANGLE TERMINAL ASSEMBLY**

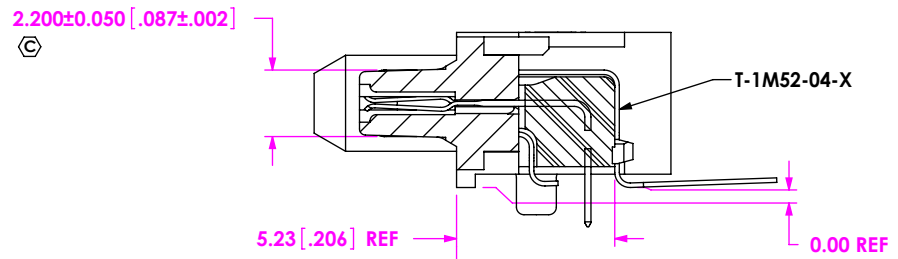
DWG. NO.  
**QRM8-XXX-XX-X-RA-GP-XX**

BY: R MUSSER 10/02/2008 SHEET 3 OF 5

**REVISION G**

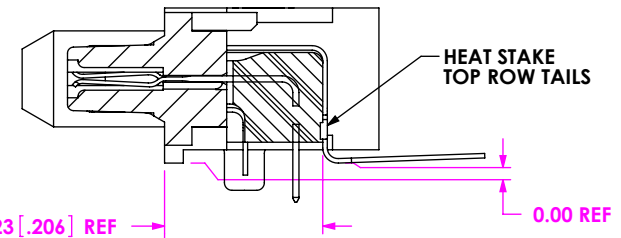
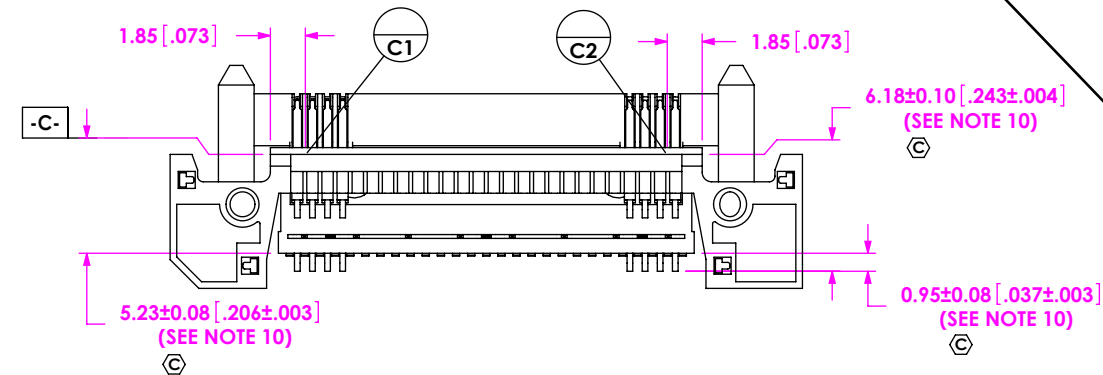


**IN PROCESS 5**  
(FORM CONTACT T-1M52-04-X)

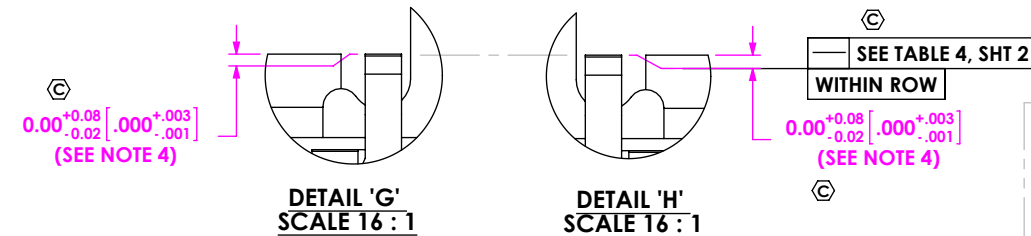
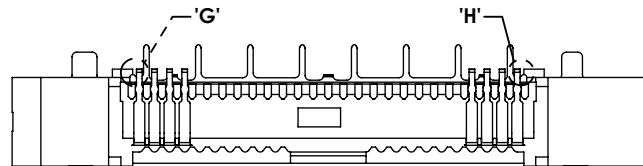


**IN PROCESS 6**  
(FILL TOP ROW)  
(SEE INSPECTION VIEW 2 FOR ASSEMBLY ORIENTATION AND CPC'S)

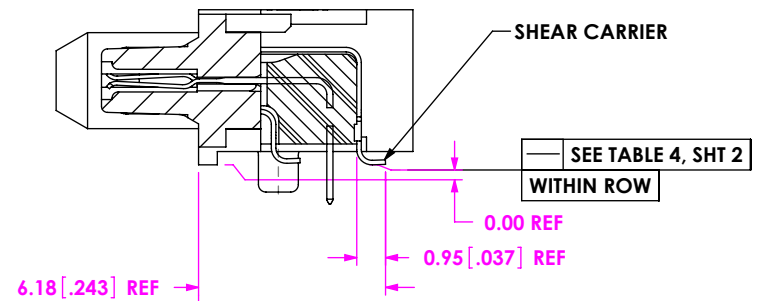
**INSPECTION VIEW 2**  
(SEE NOTE 11)



**IN PROCESS 7**  
(HEAT STAKE TOP ROW CONTACTS)  
(SEE INSPECTION VIEW 2 FOR ASSEMBLY ORIENTATION AND CPC'S)



**INSPECTION FOR IN PROCESS 6, 7 & 8**  
(CARRIER NOT SHOWN FOR IN PROCESS 6 INSPECTIONS)



**IN PROCESS 8**  
(CUTOFF OF CARRIER)  
(SEE INSPECTION VIEW 2 FOR ASSEMBLY ORIENTATION AND CPC'S)

**PROPRIETARY NOTE**  
THIS DOCUMENT CONTAINS INFORMATION CONFIDENTIAL AND PROPRIETARY TO SAMTEC, INC. AND SHALL NOT BE REPRODUCED OR TRANSFERRED TO OTHER DOCUMENTS OR DISCLOSED TO OTHERS OR USED FOR ANY PURPOSE OTHER THAN THAT WHICH IT WAS OBTAINED WITHOUT THE EXPRESSED WRITTEN CONSENT OF SAMTEC, INC.

DO NOT SCALE DRAWING

SHEET SCALE: 4:1

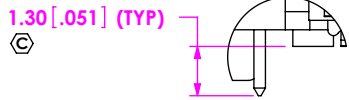
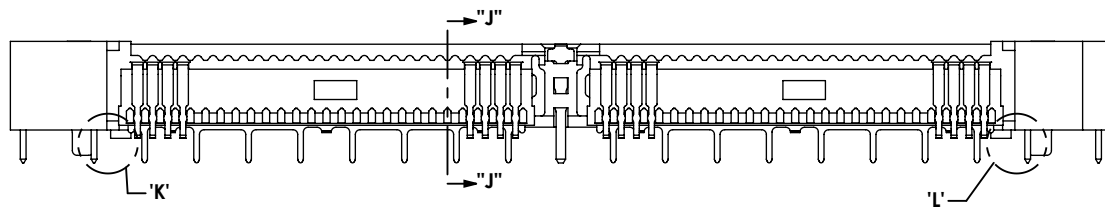


520 PARK EAST BLVD, NEW ALBANY, IN 47150  
PHONE: 812-944-6733 FAX: 812-948-5047  
e-Mail info@SAMTEC.com code 55322

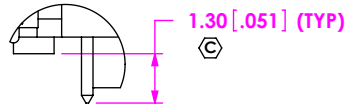
DESCRIPTION:  
**0.8mm Q-RATE RIGHT ANGLE TERMINAL ASSEMBLY**

DWG. NO.  
**QRM8-XXX-XX-X-RA-GP-XX**

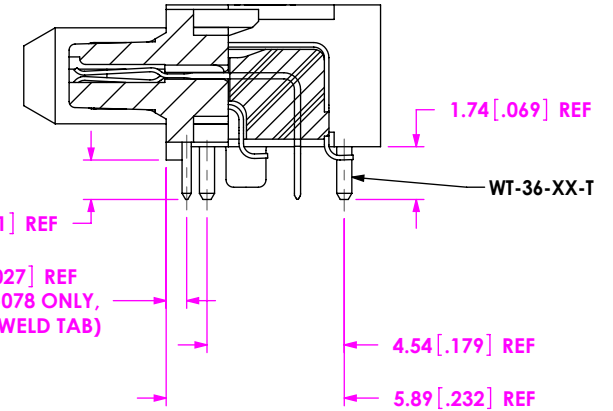
BY: R MUSSER 10/02/2008 SHEET 4 OF 5



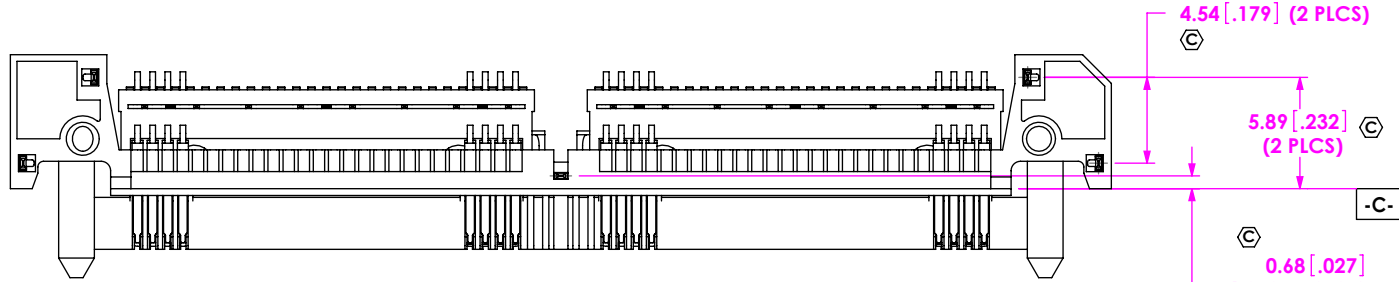
DETAIL 'K'  
SCALE 5:1



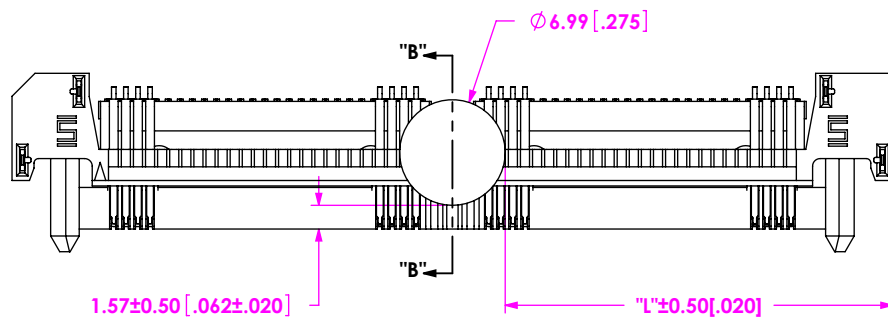
DETAIL 'L'  
SCALE 5:1



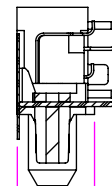
SECTION "J"-"J"



**G** IN PROCESS 9  
(FILL WELD TAB)  
(WT-36-XX-T)



SECTION "B"-"B"  
SCALE 2:1



No OF POSITIONS	"L"
-026	13.24 [0.521]
-052	25.64 [1.009]
-078	38.04 [1.498]

**FIG 2**  
-K OPTION  
(USE K-DOT-.276-.375-.005)  
(QRM8-052-01-X-RA-GP-K SHOWN)  
(SOME DETAIL REMOVED FOR CLARITY)

**PROPRIETARY NOTE**  
THIS DOCUMENT CONTAINS INFORMATION CONFIDENTIAL AND PROPRIETARY TO SAMTEC, INC. AND SHALL NOT BE REPRODUCED OR TRANSFERRED TO OTHER DOCUMENTS OR DISCLOSED TO OTHERS OR USED FOR ANY PURPOSE OTHER THAN THAT WHICH IT WAS OBTAINED WITHOUT THE EXPRESSED WRITTEN CONSENT OF SAMTEC, INC.

DO NOT SCALE DRAWING

SHEET SCALE: 4:1



520 PARK EAST BLVD, NEW ALBANY, IN 47150  
PHONE: 812-944-6733 FAX: 812-948-5047  
e-Mail info@SAMTEC.com code 55322

DESCRIPTION:  
**0.8mm Q-RATE RIGHT ANGLE TERMINAL ASSEMBLY**

DWG. NO.  
**QRM8-XXX-XX-X-RA-GP-XX**

BY: R MUSSER 10/02/2008 SHEET 5 OF 5