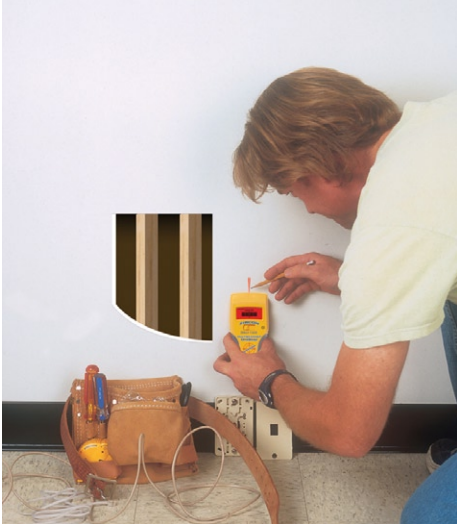


CENTER FINDER

MultiScanner® i500 OneStep®



Multifunction Wall Scanner with CenterVision® Technology and Ultra-Bright Display Screen

MultiScanner® i500 OneStep® quickly and easily locates studs, metal, and hot electrical wiring behind walls, floors, and ceilings. Zircon-exclusive CenterVision® technology finds the center of studs in a single pass. The ultra-bright display screen indicates direction, edge, and center of studs for shallow and deep targets.

- Two Stud Scan modes to find the center of wood or metal studs or joists up to 1-1/2 in. (38 mm) deep
- Metal scan mode to locate ferrous metal, such as rebar, up to 3 in. (76 mm) deep and non-ferrous metal, such as copper pipe, up to 1-1/2 in. (38 mm) deep
- AC Scan mode to locate hot electrical wires even when they're encased in plastic conduit
- WireWarning® Alert detects the presence of hot electrical wiring in stud and metal scanning modes

Use the MultiScanner® i500 to install cabinets, add electrical outlets, mount flat-panel televisions on the wall, and other remodeling projects.



SPECIFICATIONS	
Dimensions	6.38 in. H x 3.07 in. W x 1.34 in. D (162 mm x 78 mm x 34 mm)
Weight	6.5 oz. (184 g) without battery
Battery type	9-V (included)
Estimated battery life	2 years at 10 minutes per day with alkaline battery
Position accuracy	Stud Scan mode: typically within 1/8 inch (3 mm) using the dual scan and mark procedure DeepScan mode: typically within 3/16 inch (5 mm) using the dual scan and mark procedure Metal Scan mode: Typically within 1/2 in. (13 mm) using the dual scan and mark procedure
Depth	Up to 3/4 in. (19 mm) in StudScan mode Up to 1-1/2 in. (38 mm) in DeepScan mode Up to 1-1/2 in. (38 mm) for copper in Metal Scan mode Up to 3 in. (76 mm) for rebar in Metal Scan mode NOTE: Sensing depth and accuracy can vary due to moisture content of materials, wall texture, paint, etc.
AC position accuracy	Typically 90-250 V at 50-60 Hz within 6 inches (150 mm) of a hot unshielded wire in drywall.
AC depth	In typical drywall with Romex™ wiring, wires can be detected up to 3 inches (76 mm) deep NOTE: Sensing depth and accuracy can vary due to moisture content of materials, wall texture, paint, etc.
Operating temperature	32° to 122°F (0° to 50°C)
Storage temperature	-14° to 140°F (-10° to 60°C)
Humidity	80% RH (noncondensing)
Water resistance	Splash and water resistant, not waterproof



Find Stud Center



Find Wood or Metal Studs



Scan Thick Walls for Studs



Scan for Metal



Scan for Electrical