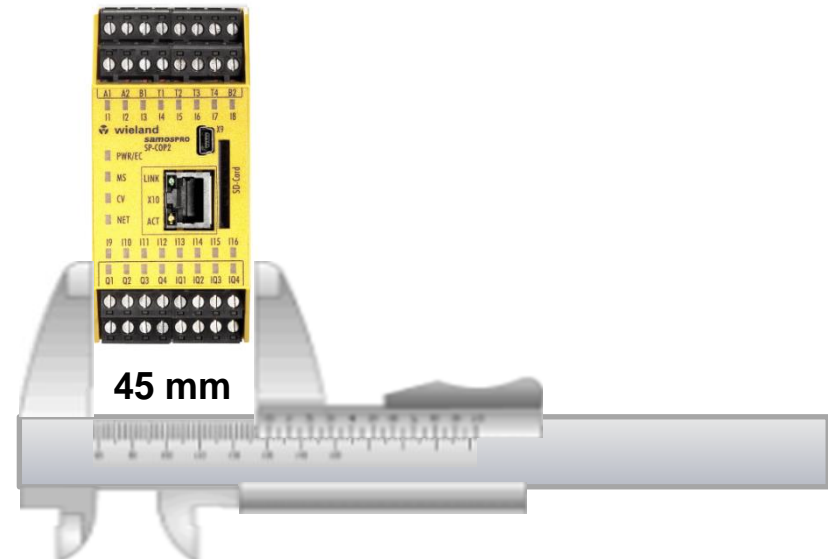


Compact Powerhouse

- 16 safe inputs, 4 safe outputs and 4 exchangeable safe inputs/outputs (COP 2 versions) in a housing of 45 mm width solve many safety tasks – A new generation of safety control for universal automation tasks today and tomorrow

safety



Well connected

- Industrial Ethernet protocols are available from the start and fieldbus-gateways can be added if needed – The integration of various industrial networks is a key advantage of the system



For large and small tasks

- For large applications, the system is modular expandable up to 116 safe inputs and 56 safe outputs – Ideal conditions for the flexible, safe automation of large machinery and equipment

safety



Certified Know-how

- The extensive library of certified and field-proven function blocks facilitate the implementation of all security functions – More than 40 different function blocks are available at any time and without additional programming effort.

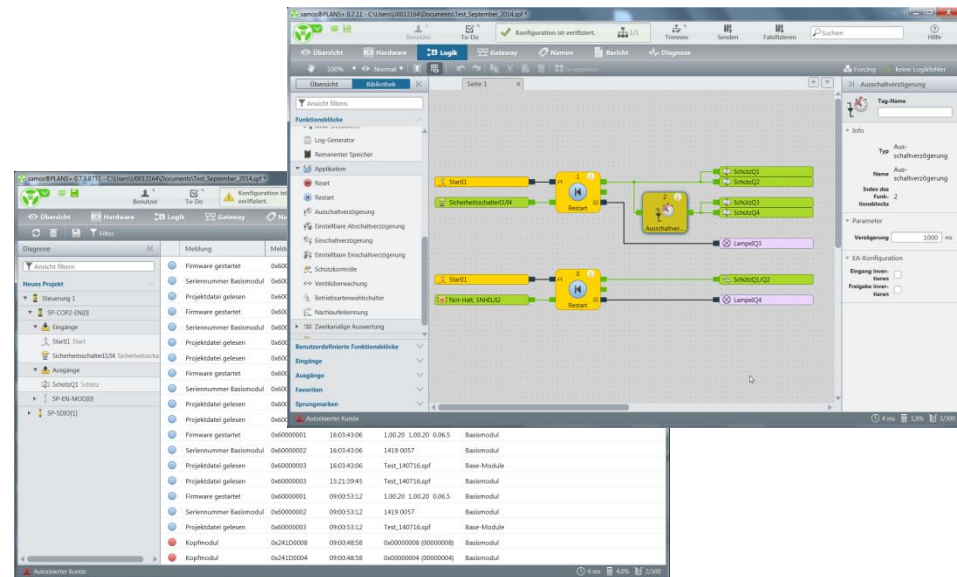


Funktionsblöcke	
▶	Logik
▼	Applikation
⏪	Reset
⏩	Restart
⏸	Ausschaltverzögerung
⏸	Einstellbare Abschaltverzögerung
⏸	Einschaltverzögerung
⏸	Einstellbare Einschaltverzögerung
⚠	Schützkontrolle
⏸	Ventilüberwachung
⚙	Betriebsartenwahlschalter
⏸	Nachlauferkennung
▶	Zweikanalige Auswertung
▶	Muting

Worldwide access

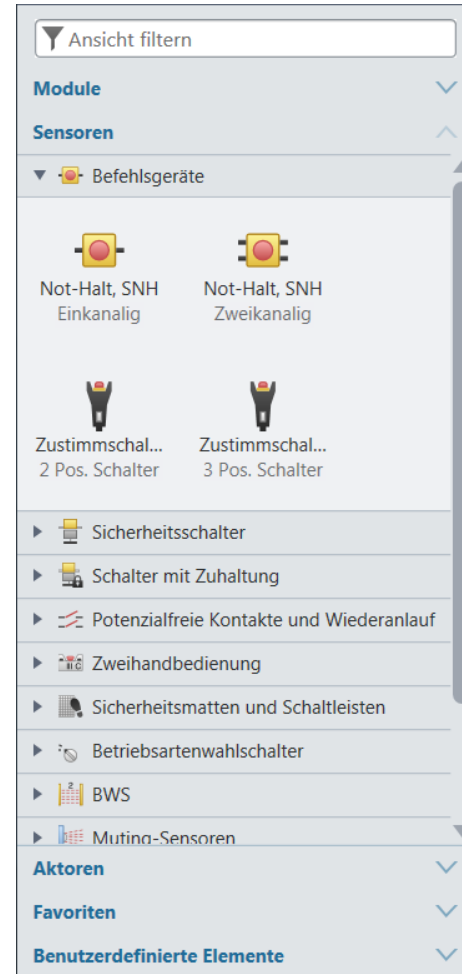
- Remote maintenance can be realized easier and without additional effort, as in other systems is usual – With the integrated online diagnostics and the system log, problems in global operation can be located quickly and avoid costly service missions.

safety



Individual adaption

- User-specific sensors and function blocks can be defined and managed in libraries – No other system provides more multi-functionality



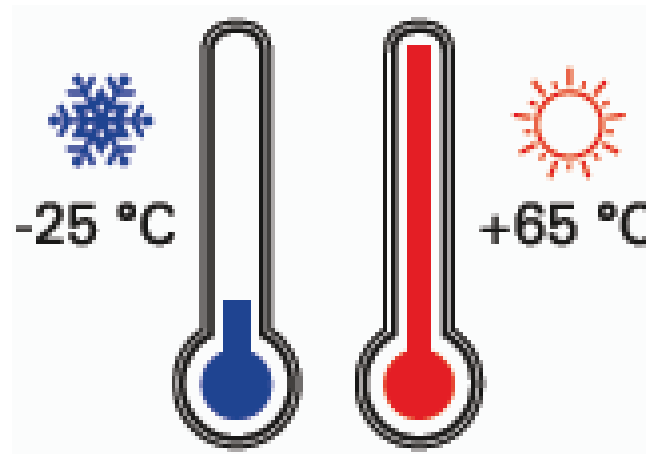
Integrated Interfaces

- Integrated USB and ETH interfaces allow customized access to the system - This means more transparency for the user during the design phase and operation



Designed for the toughest demands

- The exceptionally wide ambient temperature range from $-25\text{ }^{\circ}\text{C}$ up to $+65\text{ }^{\circ}\text{C}$ gives more security in all applications - A use even under extreme environmental conditions is thus made possible for the first time

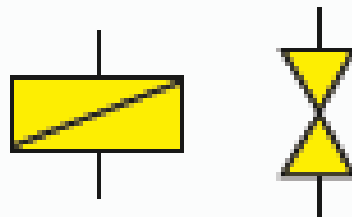


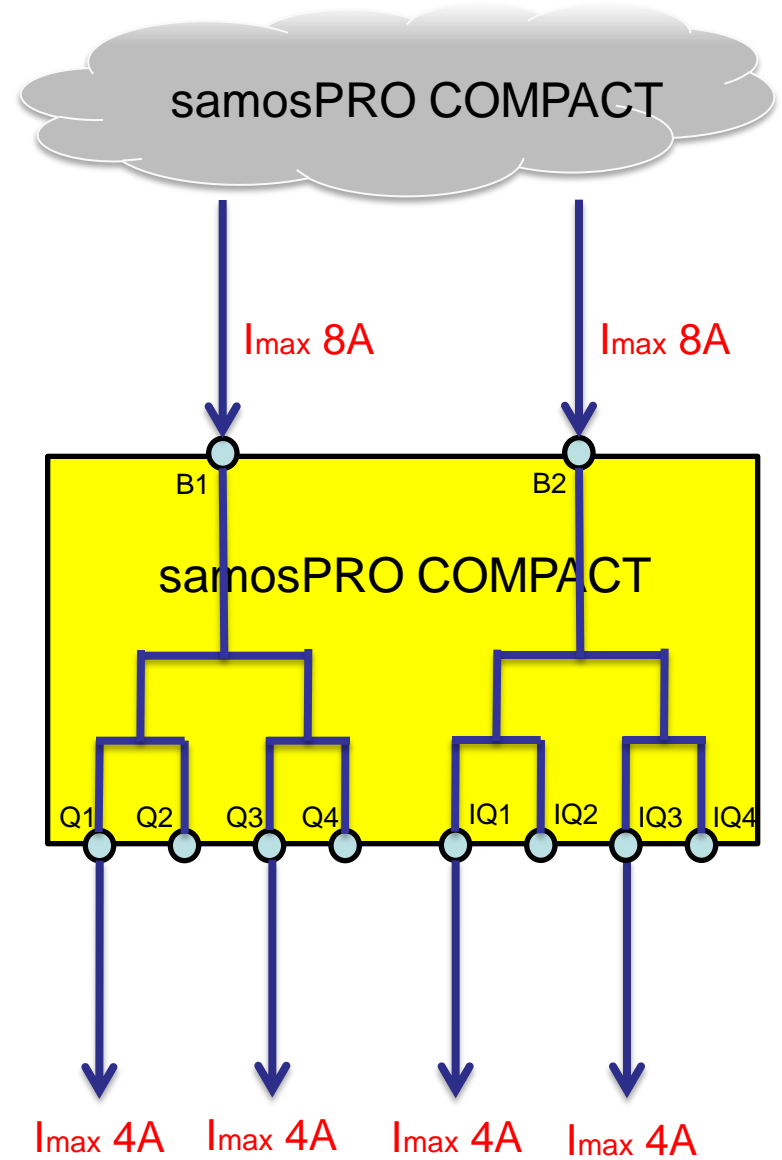
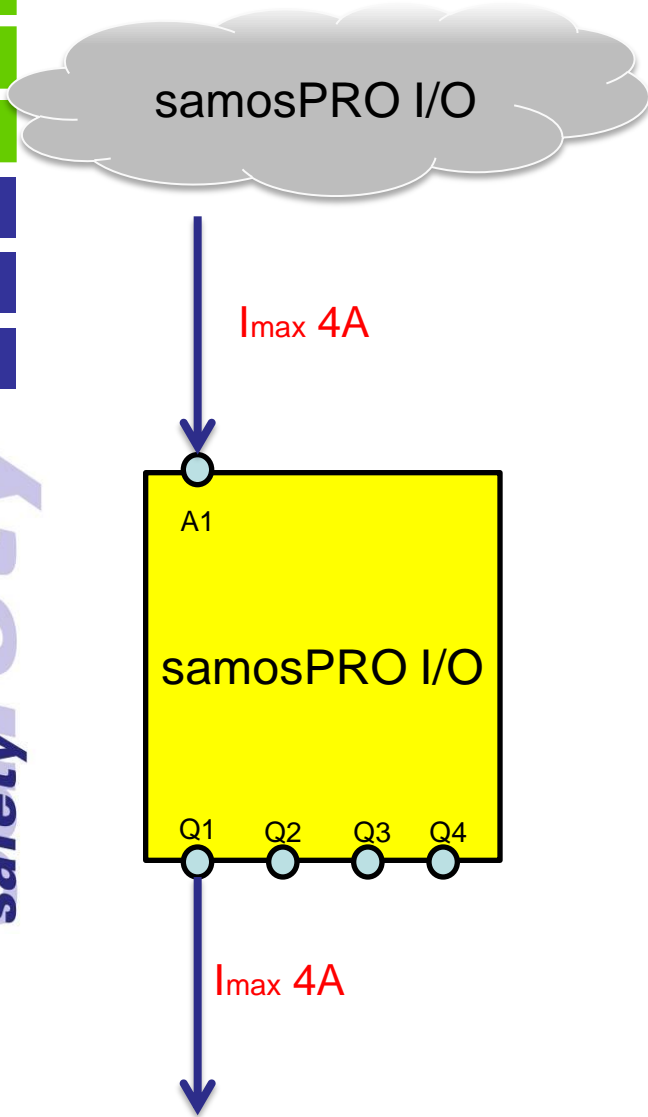
High switching capacity

- 4 A wear-free switching capacity at each output of the system -
Powerful Alternative to contactors and relays

4 A

Switching capacity

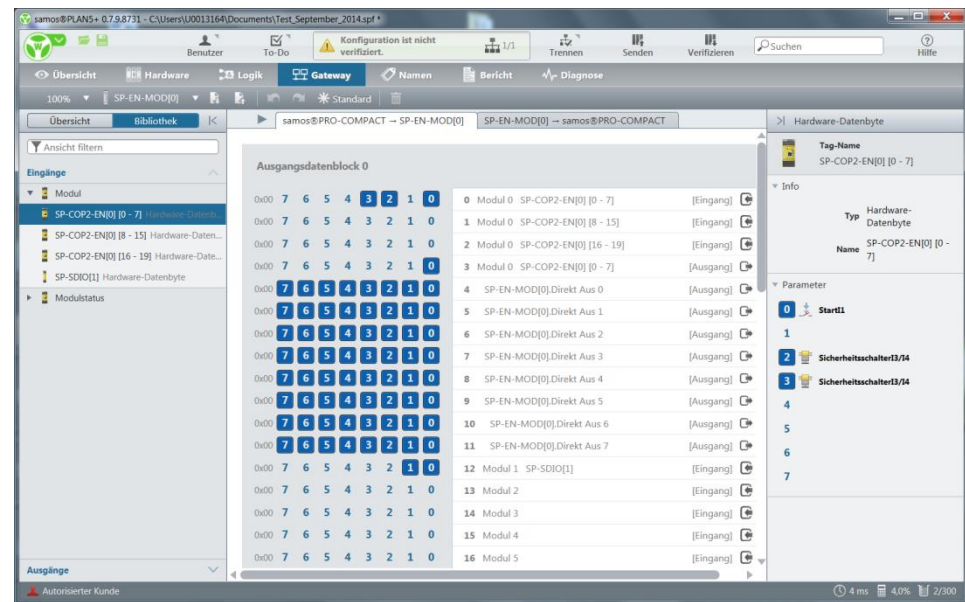




Communication made easy

- All Industrial Ethernet or fieldbus protocols can be used easily, thanks to a comfortable support tool - realizing industrial communication has never been so easy

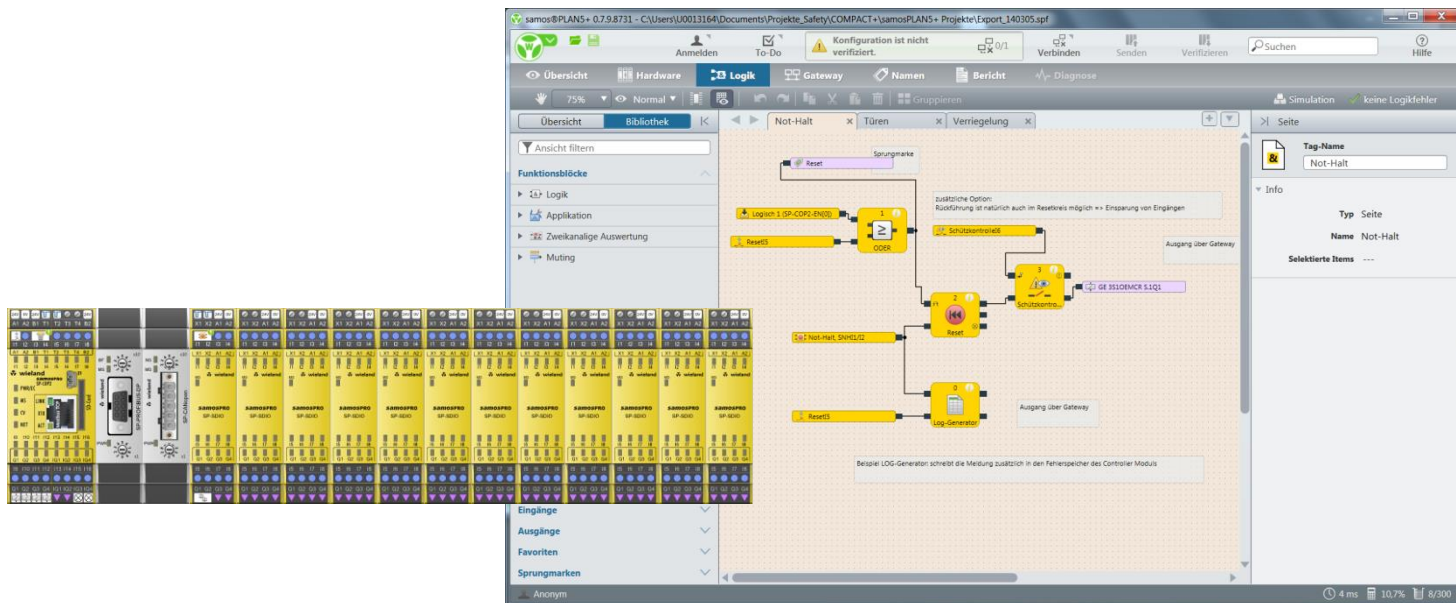
safety



Applications without borders

- All inputs and outputs and up to 300 function blocks can be used freely in any project - Ideal conditions for the solution of simple but also complex safety applications

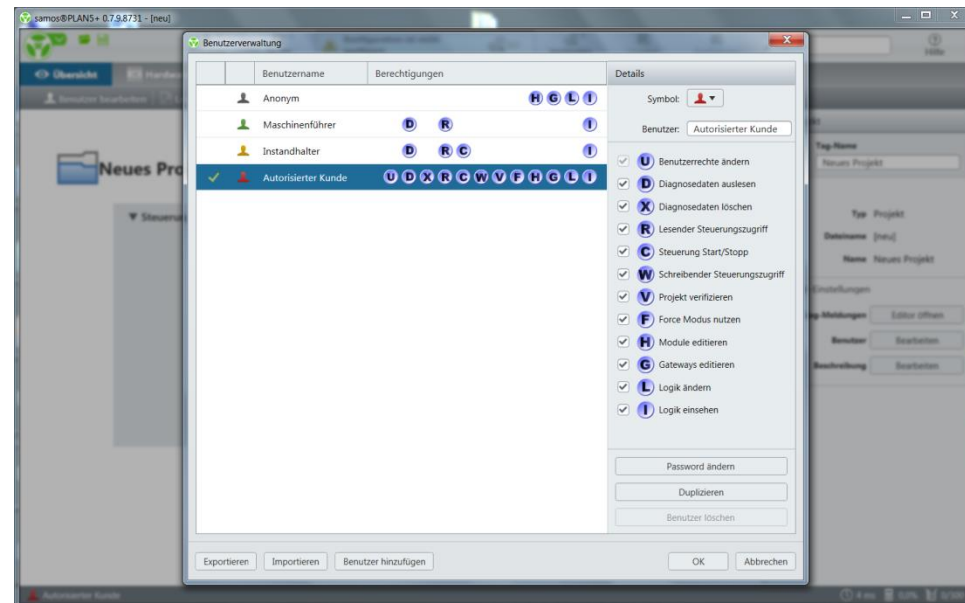
safety



Know-how is protected

- The tool also offers the possibility of individual preparation of user-specific function blocks and integrated know-how protection of projects - Features you will not find in other systems

safety



Removable program memory

- The exchangeable program memory SP-COP-CARD in SD-card format offers 512 MB disk space for application programs and is easily accessible - The easy handling of projects saves time during commissioning, reproduction and during service.



Optical visualization via LED

- All inputs and outputs of the system are equipped with visual displays that are assigned to the connections clearly – The visualization of the operational state of a system can't be clearer and easier.



Flexible connection techniques

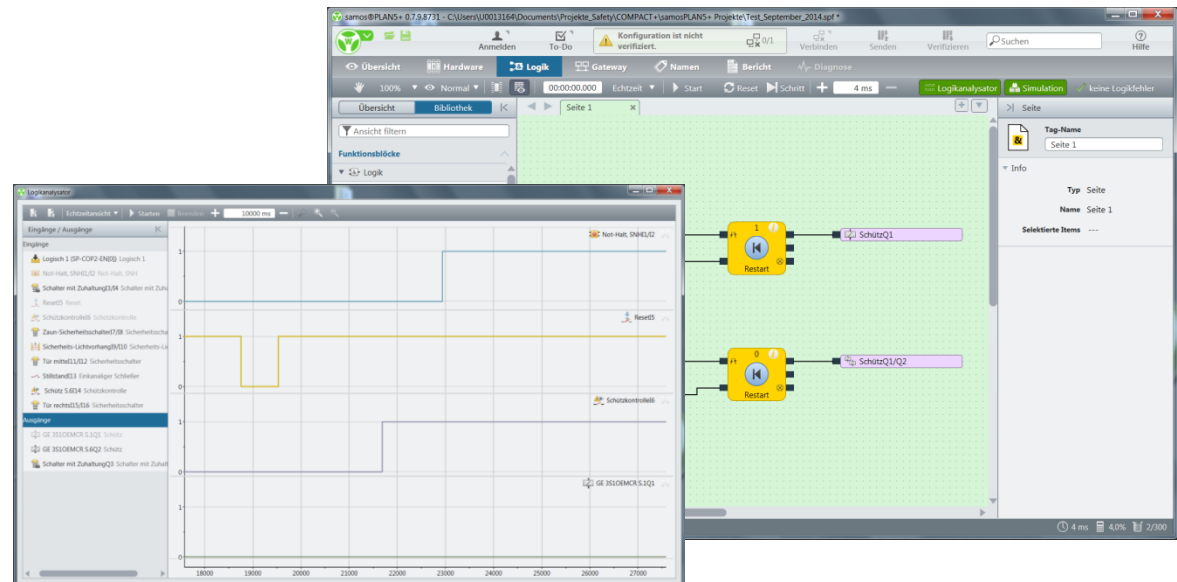
- All modules of the system are optionally available with plug-in screw or push-in terminals - This means more flexibility for users, even for the connection method.



Perfect process simulation

- The simulation function with integrated logic analyzer allows a review of the safety functions already programmed on the PC - This helps in solving problems, saving valuable time during the commissioning of the machine and increases the functional safety overall.

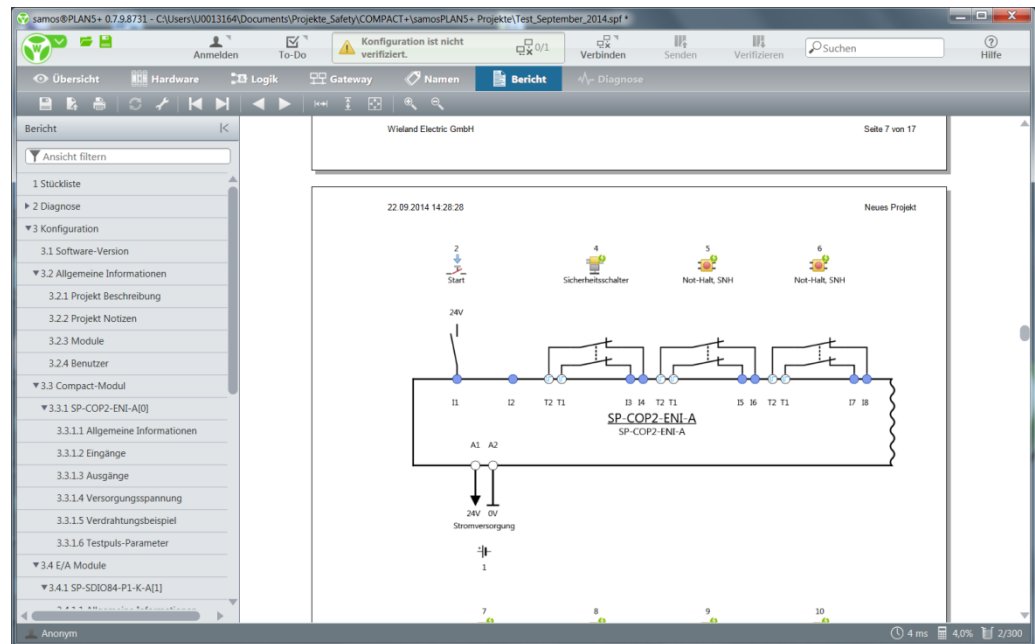
safety



Integrated documentation

- The documentation function is generating a project report on the touch of a button - Important part of a norm-compliant documentation of the machine

safety



Compatible & Comfortable

- The modern programming tool samosPLAN5 + offers many open interfaces and is of course suitable for all Windows operating systems - A productive and reliable work flow is guaranteed now and in the future.

