

Specification Status: Released

Maximum Electrical Rating

Voltage: 30V_{DC}
Short Circuit Current: 10A

Notes:

1. All terminations are tin plated.
2. Drawing not to scale

Marking:

H01 — PART IDENTIFICATION

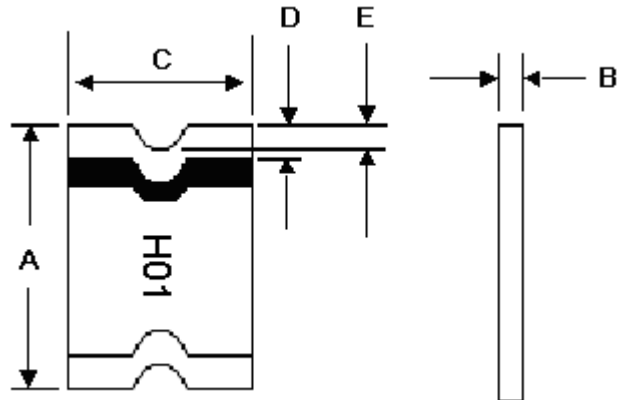


TABLE I. DIMENSIONS:

	A		B		C		D		E
	MIN	MAX	MIN	MAX	MIN	MAX	MIN	MAX	MIN
mm:	3.00	3.40	0.30	0.70	1.37	1.80	0.25	0.75	0.076
in:	(0.118)	(0.134)	(0.012)	(0.028)	(0.054)	(0.071)	(0.010)	(0.030)	(0.003)

TABLE II. PERFORMANCE RATINGS:

CURRENT RATINGS**						TIME TO TRIP**	RESISTANCE VALUES	TRIPPED-STATE POWER DISSIPATION**	
AMPS AT 0°C		AMPS AT 25°C		AMPS AT 85°C		SECONDS AT 25°C, 1A MAX	OHMS AT 25°C	WATTS AT 25°C, 30V MAX	
HOLD	TRIP	HOLD	TRIP	HOLD	TRIP		MIN	MAX*	
0.15	0.52	0.10	0.35	0.06	0.21	0.1	1.10	10.00	0.8

* Maximum resistance is measured 1 hour after reflow.

** Values specified were determined using PCB's with 0.030"X1.5 ounce copper traces.

Agency Recognition: None
Reference Documents: PS300
Precedence: This specification takes precedence over documents referenced herein.
Effectivity: Reference documents shall be the issue in effect on the date of invitation for bid.
CAUTION: Operation beyond the rated voltage or current may result in rupture, electrical arcing or flame.

Materials Information

ROHS Compliant

Directive 2002/95/EC
Compliant

ELV Compliant

Directive 2000/53/EC
Compliant

Pb-Free



Halogen Free*



* Halogen Free refers to: Br≤900ppm, Cl≤900ppm, Br+Cl≤1500ppm