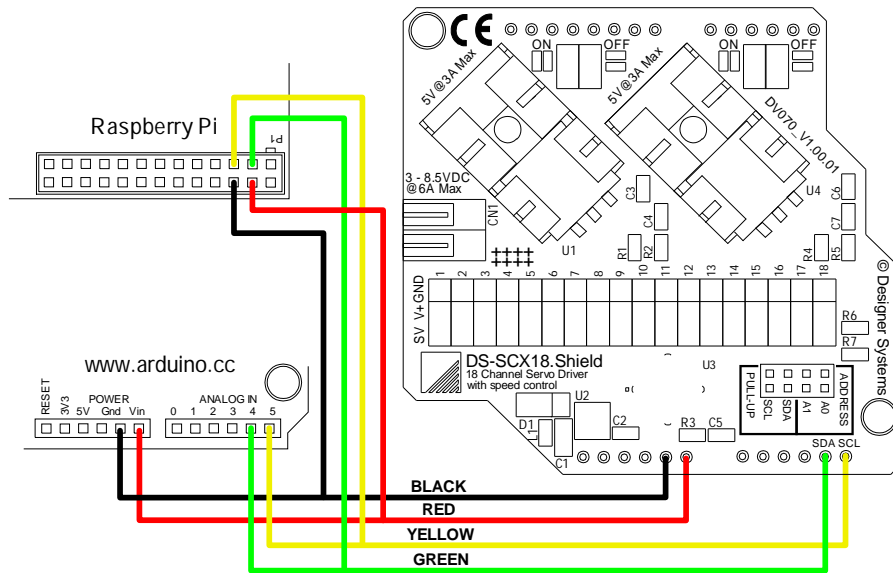


DS-SCX18.S quick start guide

Connection:

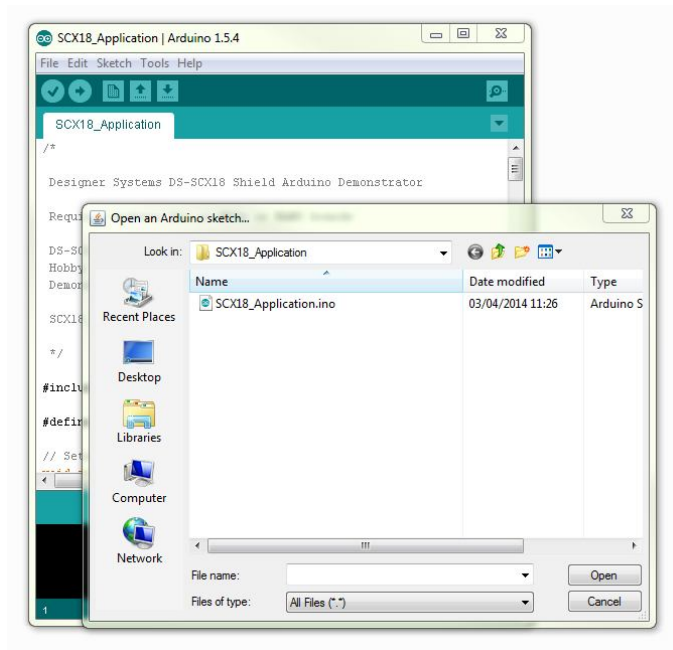
The DS-SCX18.S should be connected to the Arduino or Raspberry-Pi boards using the supplied wires or plugged into the Arduino board after soldering pin headers into the SCX18.S board [not supplied]. The wiring diagram below shows the connections that need to be made:



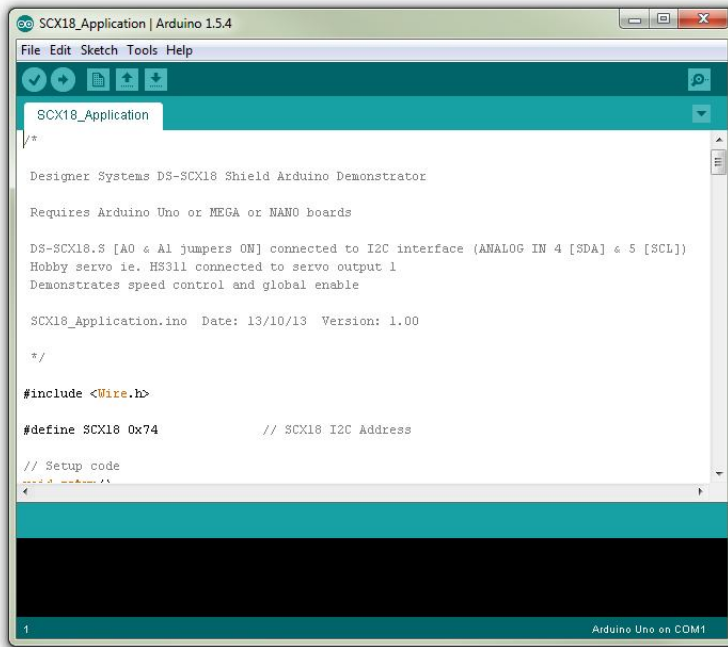
Connect a hobby servo (ie. HS311) to servo output 1, ensuring that black wire on the servo connects to the row of pins marked 'GND', and connect a battery or power supply of 6 to 8.5Volts to the servo power terminal block (ENSURE THAT POSITIVE ON THE BATTERY/POWER CONNECTS TO THE TERMINAL MARKED WITH ++++++).

Arduino demo software application:

After downloading and installing the open-source Arduino environment from <http://arduino.cc/hu/Main/Software> also download the DS-SCX18.S application sketch from http://www.designersystems.co.uk/download/SCX18.S_Disk.zip and unzip and load this sketch file into the Arduino environment.



Connect the Arduino board to the computer using a USB cable and power up the board with an external power adaptor. Within the Arduino environment click on 'File' then 'Upload'. (Note: This assumes that you have already selected the Arduino board and COM port using 'Tools', 'Board' or 'Port')



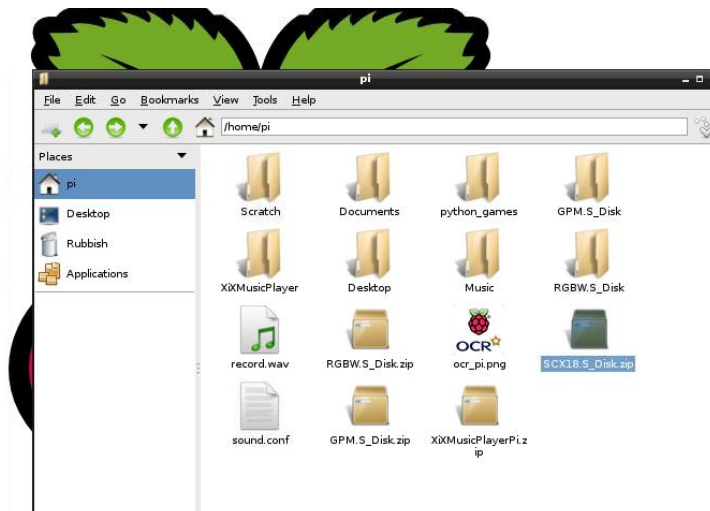
When the application has been uploaded it will start the demonstration. You can modify the demonstration code to access other servos (2-18), experiment with the speed control, soft-start & reverse within the SCX18.S. Standard routines are provided within the demo program that can be used in your own programs.

Raspberry-Pi demo software application:

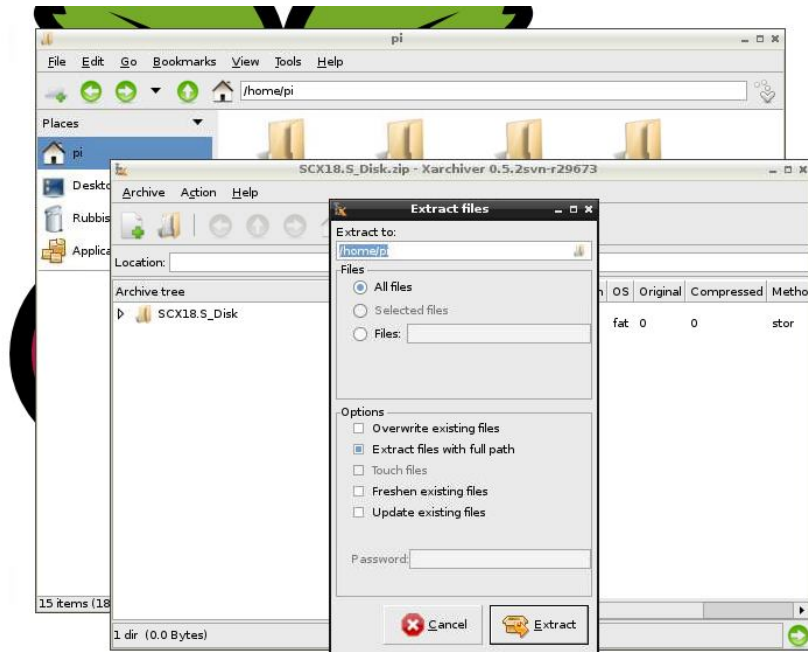
After preparing an SD card with the latest release of the NOOBS (New Out Of Box Software) downloaded from <http://www.raspberrypi.org/downloads> start the Raspberry-Pi, log in (default username 'pi', password 'raspberrypi') and start the desktop using the command 'startx'.

Click on the start menu icon in the bottom left-hand corner of the desktop and select 'Internet' and 'NetSurf Web Browser'.

Navigate to http://www.designersystems.co.uk/download/SCX18.S_Disk.zip and confirm that you want to save this file. Close the NetSurf browser and click on the start menu icon, 'Accessories' and 'File Manager', you should then see the SCX18.S_Disk.zip file listed under the /home/pi directory as below:

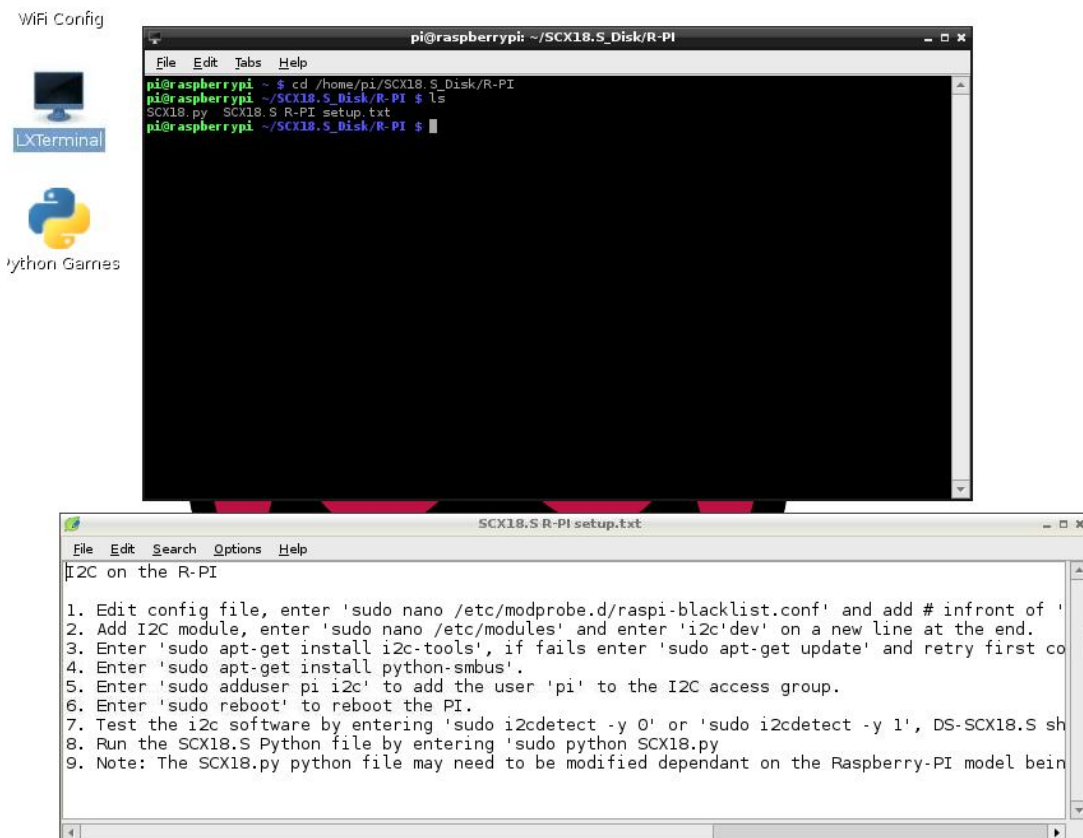


Double click on this file to start the zip extractor and then go the 'Action', 'Extract' and click on the 'Extract' button as below:



Close the XArchiver window and file manager window should now contain a directory called 'SCX18.S_Disk'. Double click on this directory, then 'R-PI' and locate the 'SCX18.S R-PI setup.txt' file and double click to open this file so that it can be read.

You now need to start the LX Terminal window to run the demo program, so close the file manager window and double click the 'LXTerminal' icon on the desktop. Type in 'cd /home/pi/SCX18.S_Disk/R-PI' and then 'ls' to list the files. You should now have a desktop that looks similar to the below:



If you have not run any I²C connected devices on your Raspberry-Pi before then follow the procedure listed in the SCX18.S R-PI setup.txt file. A reboot will be required to bring you back to desktop.

Restart the LXTerminal, if required, and enter 'sudo python SCX18.py' to start the DS-SCX18.S application, you should then see the servo connected to the SCX18.S start its demonstration.

The SCX18.py program can be customised to access other servos (2-18), experiment with the speed control, soft-start & reverse by editing the SCX18.py file using the command line 'sudo nano SCX18.py'. Standard routines are provided within the demo program that can be used in your own programs.

More information:

For a PDF of this quick start guide or a full technical datasheet please visit:

http://www.designersystems.co.uk/SCX18.S_info.htm



WEEE Consumer Notice

This product is subject to Directive 2002/96/EC of the European Parliament and the Council of the European Union on Waste of Electrical and Electronic Equipment (WEEE) and, in jurisdictions adopting that Directive, is marked as being put on the market after August 13, 2005, and should not be disposed of as unsorted municipal/public waste. Please utilise your local WEEE collection facilities in the disposition and otherwise observe all applicable requirements. For further information on the requirements regarding the disposition of this product in other languages please visit www.designersystems.co.uk



RoHS Compliance

This product complies with Directive 2002/95/EC of the European Parliament and the Council of the European Union on the Restriction of Hazardous Substances (RoHS) which prohibits the use of various heavy metals (lead, mercury, cadmium, and hexavalent chromium), polybrominated biphenyls (PBB) and polybrominated diphenyl ethers (PBDE).

Declaration of Conformity

Apparatus name / model number DS-SCX18.S

Conformity via Generic Standard EN61000-1
Generic Standard EN61000-3

Conformity criteria For use only within commercial, residential and light industrial applications

We certify that the apparatus identified above conforms to the requirements of Council Directive 2004/108/EC & 2006/95/EC

Signed.

Date 20/6/13

Having made this declaration the CE mark is affixed to this product, its packaging, manual or warranty.

The information appearing in this data sheet is believed to be accurate at the time of publication. However, Designer Systems assumes no responsibility arising from the use of the information supplied. The applications mentioned herein are used solely for the purpose of illustration and Designer Systems makes no warranty or representation that such applications will be suitable without further modification, nor recommends the use of its products for application that may present a risk to human life due to malfunction or otherwise. Designer Systems reserves the right to alter its products without prior notification.

Copyright © 2013-2014 by Designer Systems Ltd

Manufacturer Designer Systems, 11 Castle Street, Truro, Cornwall
TR1 3AF, United Kingdom

Description of apparatus Robotic interface peripheral