

DETAILS

Product Number	C13806_MIRELLA-XW-PF
Family	Mirella
Type	Reflector
Color	white
Diameter	50 mm
Height	23.9 mm
Style	round
Optic Material	HRPC
Holder Material	
Fastening	socket
Status	ready
ROHS Compliant	Yes
Date Updated	14/08/2014



OPTICAL PROPERTIES

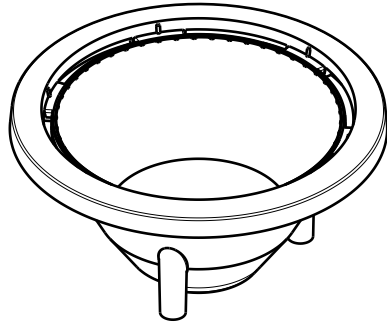
LED	Viewing Angle	Light Beam	Efficiency	cd/lm	Connector
CXA/B 1816 & CXA/B 1820 & CXA 1850	73 deg	WWW-class	89 %	0.620	IDEAL: 50-2101CR + Mirella(50-2100MR)
LUXEON CoB 1202/1203	75 deg	WWW-class	93 %	0.600	IDEAL: 50-2100NC + Mirella(50-2100MR)
L121A/L060B/L024Z	75 deg	WWW-class	92 %	0.600	IDEAL: 50-2100NC + Mirella(50-2100MR)
NSBxL066A/NFCxL036B	75 deg	WWW-class	93 %	0.700	IDEAL: 50-2100NC + Mirella(50-2100MR)

D

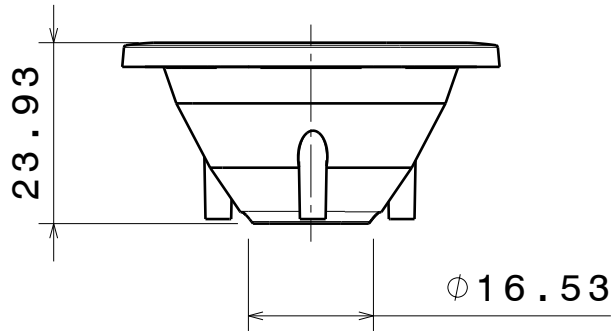
C

B

A

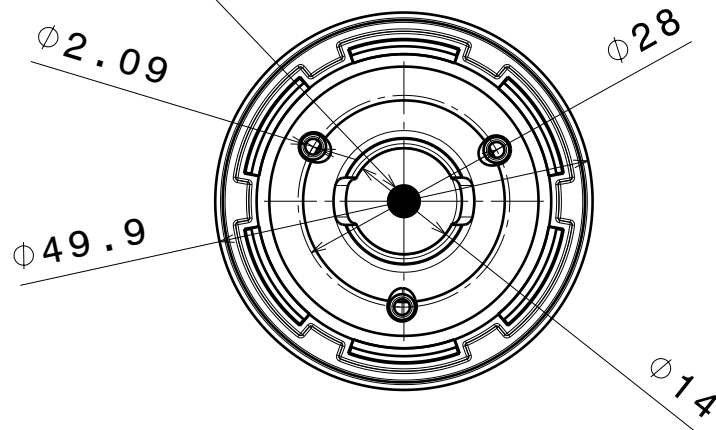


Isometric view



Front view

LED position



Bottom view

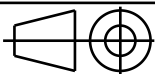
INDEX	PART NO	DESCRIPTION	MATERIAL	COLOUR
1	C13806	MIRELLA-XW-PF	PC	white

Tolerances if not otherwise shown
According to DIN ISO 2768-1
Linear measures: class C
According to DIN ISO 2768-2
Form and position: class L

LEDiL

Ledil Oy
Salorankatu 10
FIN 24240 SALO
Finland

THIRD ANGLE PROJECTION:



DRAWING TITLE

C13806_MIRELLA-XW-PF

This drawing is the property
of LEDiL Oy. It may not be
reproduced, copied or
communicated without a written
agreement with LEDiL Oy.

SIZE PART NUMBER

A4

C13806

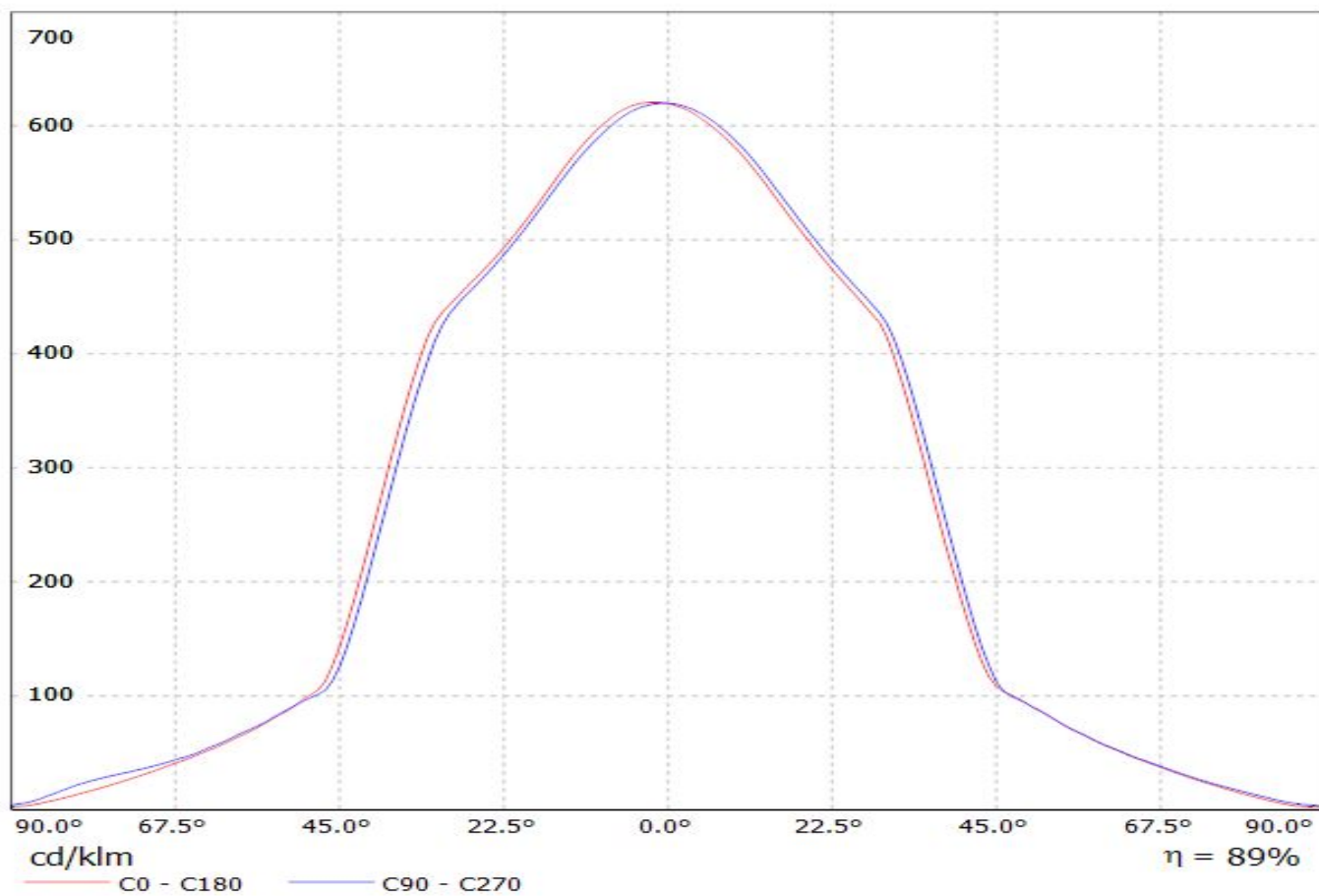
SCALE	1:1	WEIGHT	4,17 g	SHEET	1/1
-------	-----	--------	--------	-------	-----

D

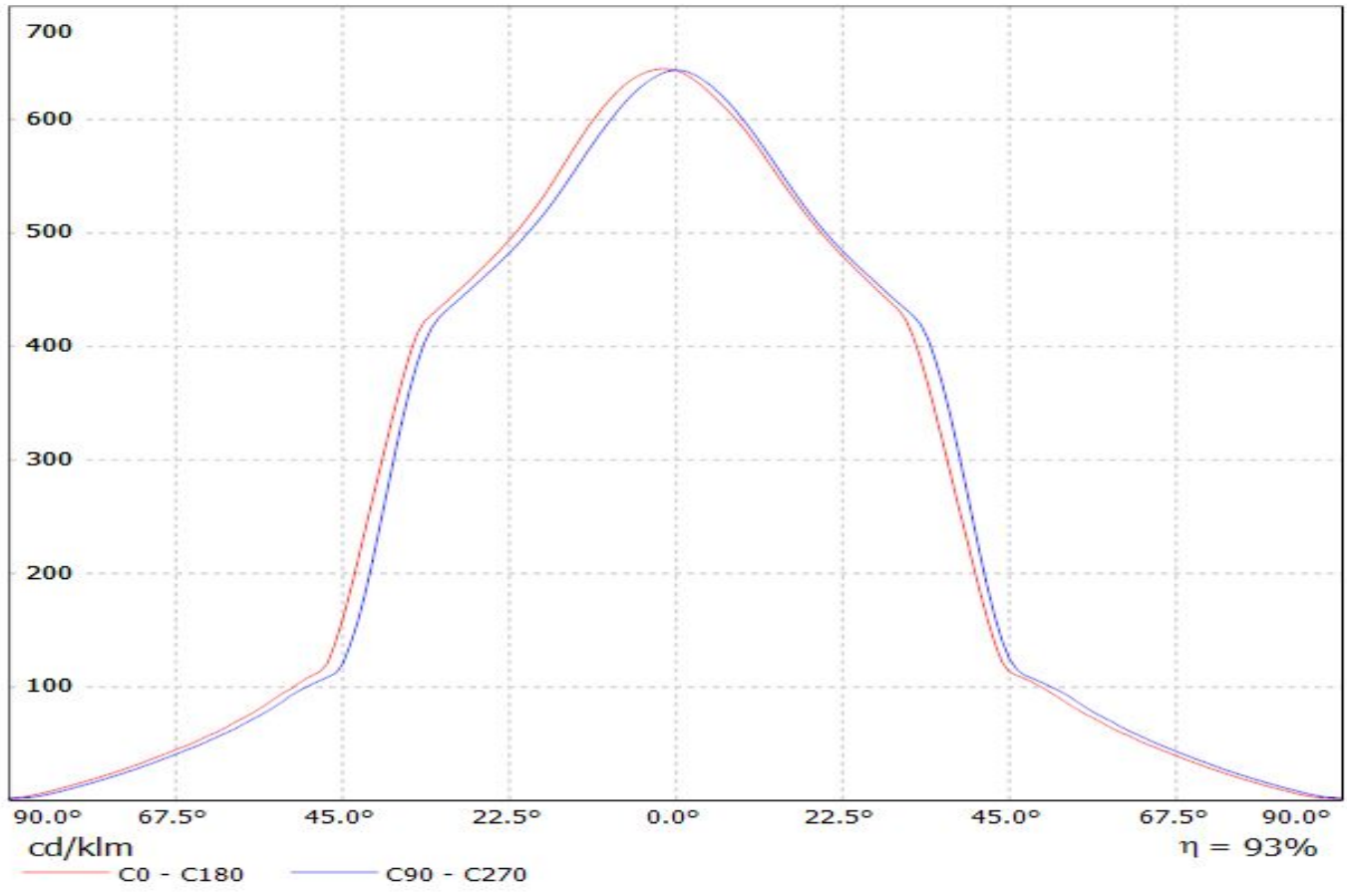
A

Luminaire: LEDiL Oy C13806_MIRELLA-XW-PF_(CXA1816)

Lamps: 1 x CREE_CXA1816_(CXA1816-30F-P2-N0H-00001)_1077.67lm@250mA_P=8.73226W_I=249.8mA

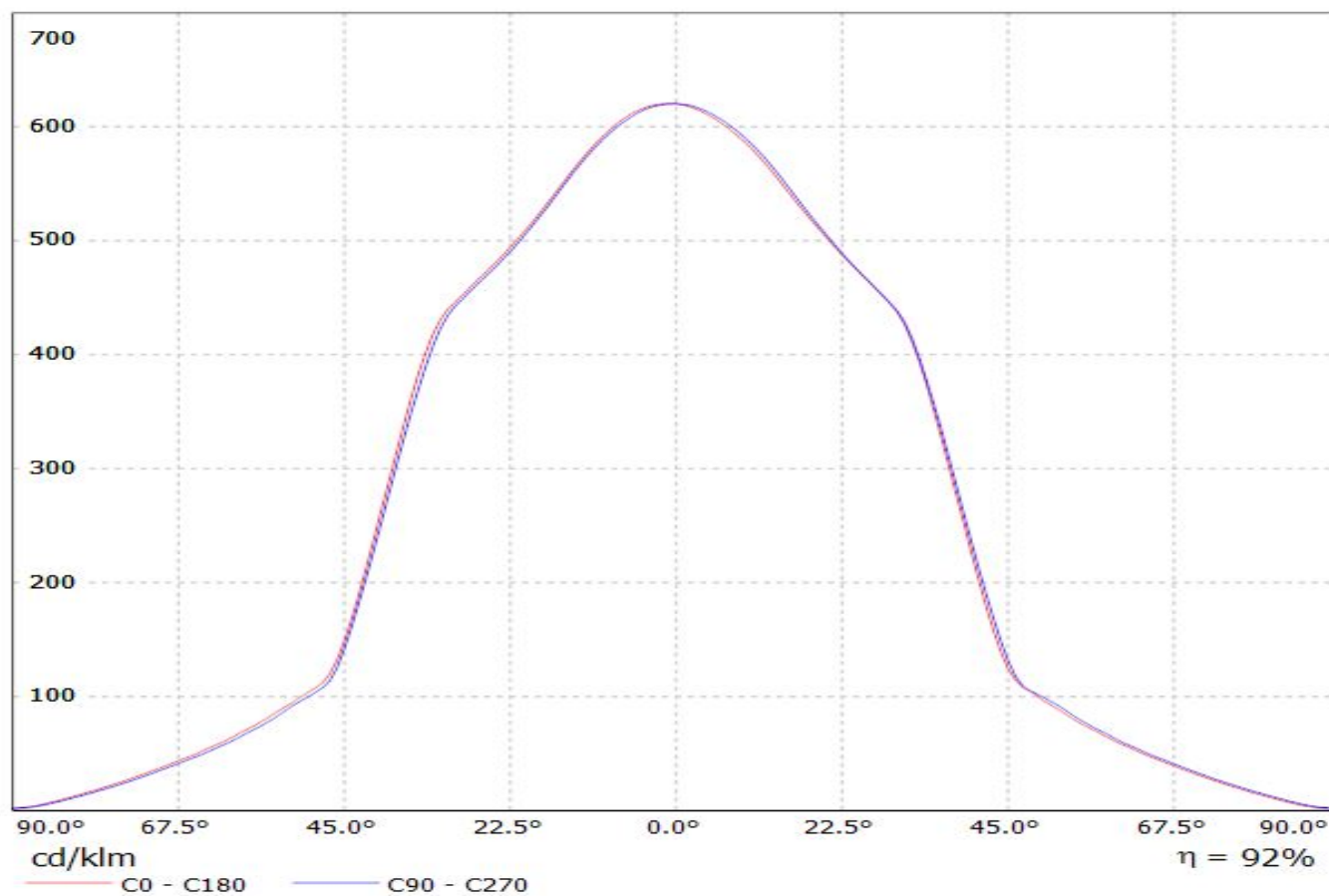


Luminaire: LEDiL Oy C13806_MIRELLA-XW-PF_(COB_1203)
Lamps: 1 x Phillips_Lumileds_Luxeon_COB_1203_(LHC1-3080-1203)
_987.649lm@250mA_P=8.67381W_I=249.8mA



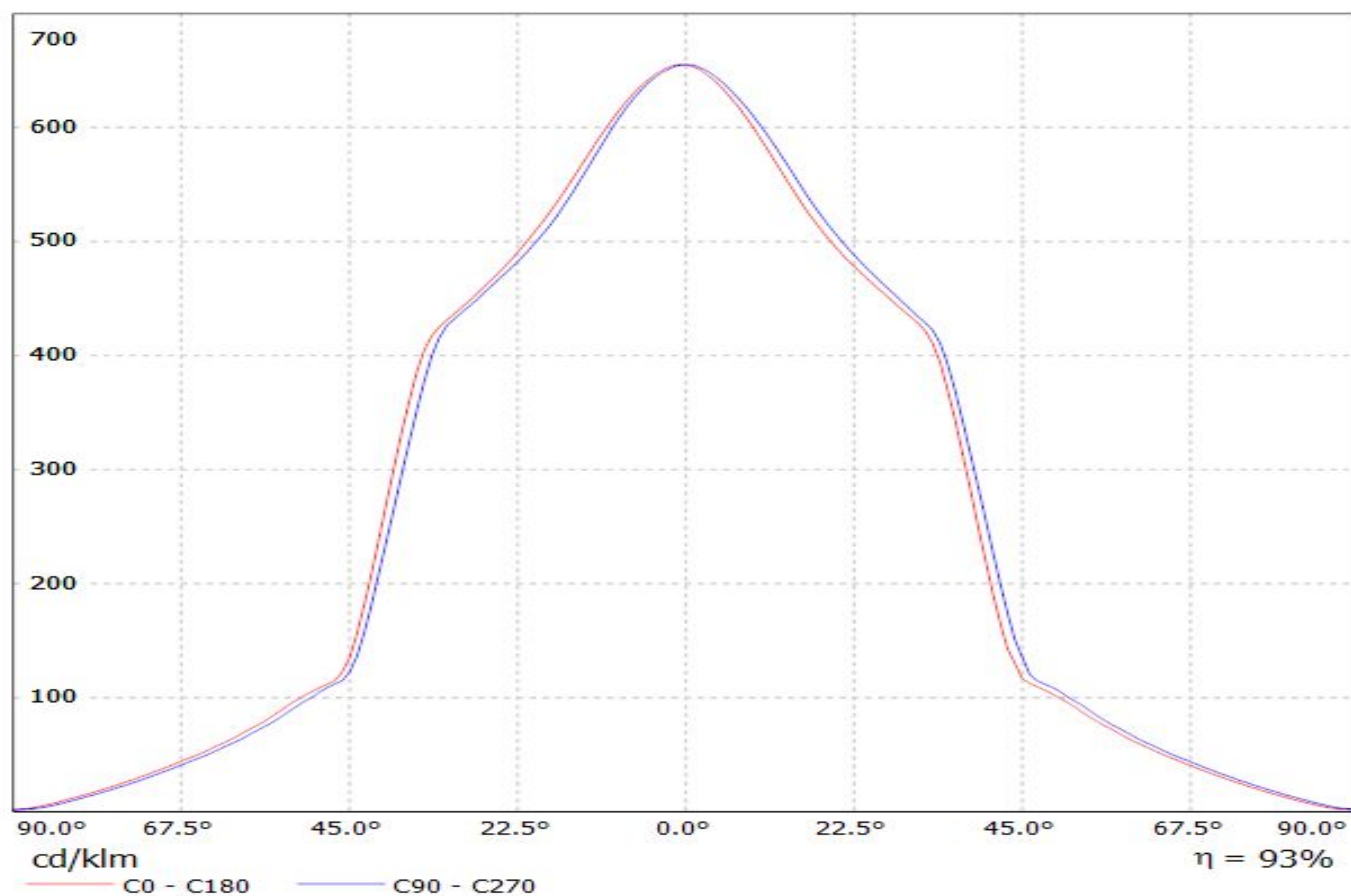
Luminaire: LEDiL Oy C13806_MIRELLA-XW-PF_(NFCLL060B)

Lamps: 1 x Nichia_NFCLL060B_(sm403G2450R8000)_1315.54lm@250mA_P=8.47996W_I=249.8mA



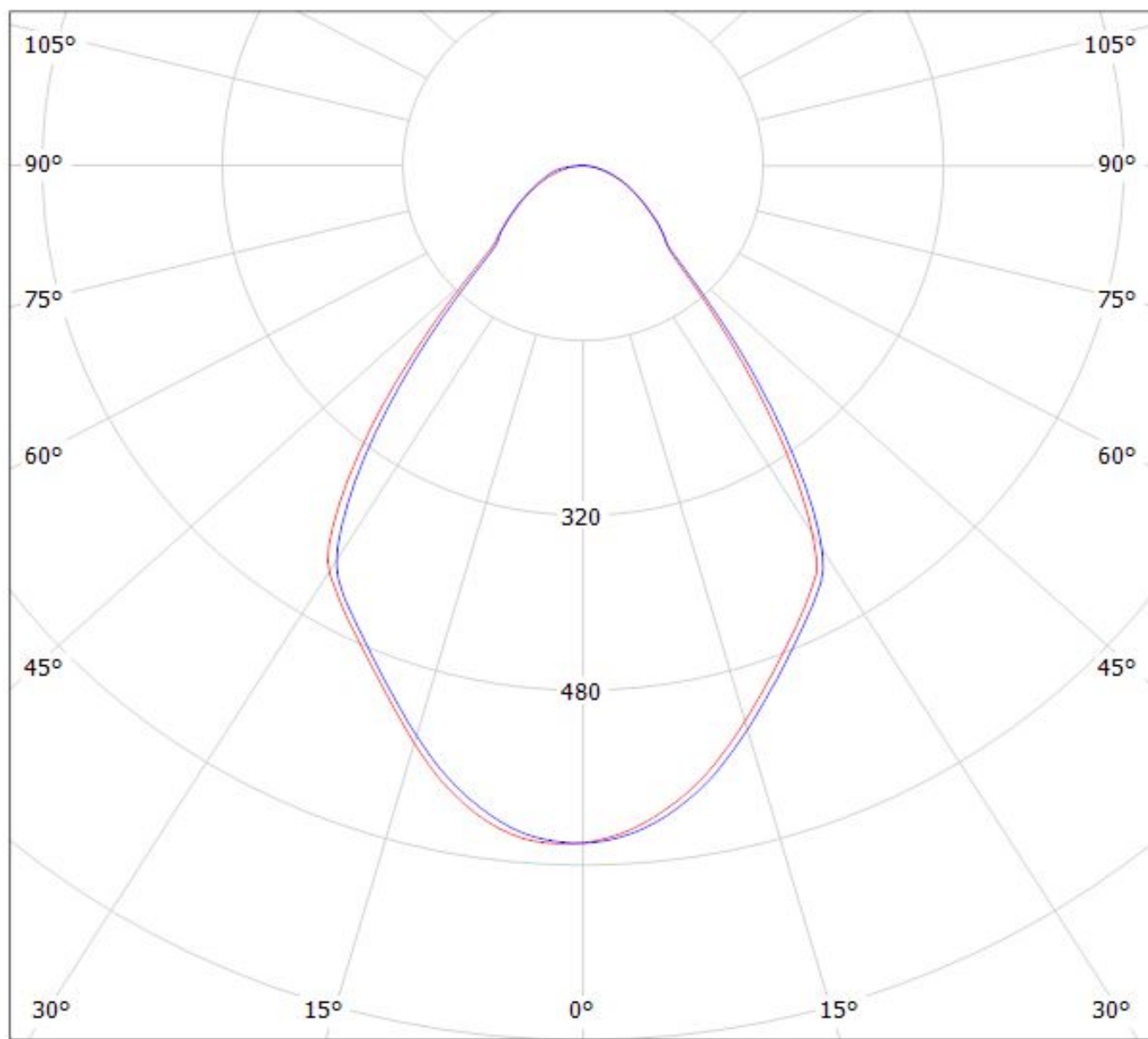
Luminaire: LEDiL Oy C13806_MIRELLA-XW-PF_(NFCLL036B)

Lamps: 1 x Nichia_NFCLL036B_(sm403J1300R8000)_546.369lm@100mA_P=3.34274W_I=100.1mA



Luminaire: LEDiL Oy C13806_MIRELLA-XW-PF_(CXA1816)

Lamps: 1 x CREE_CXA1816_(CXA1816-30F-P2-N0H-00001)_1077.67lm@250mA_P=8.73226W_I=249.8mA



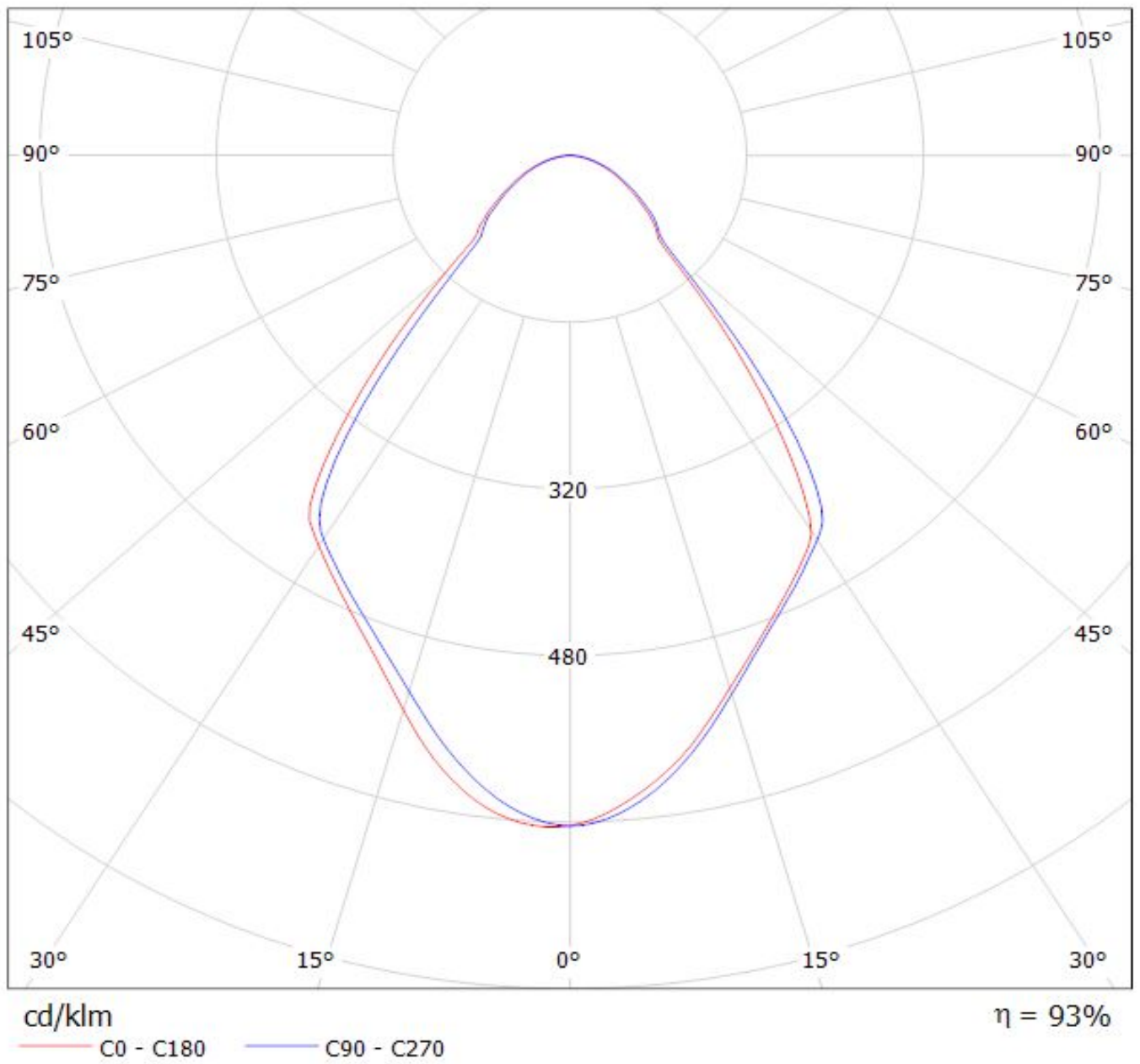
cd/klm

— C0 - C180

— C90 - C270

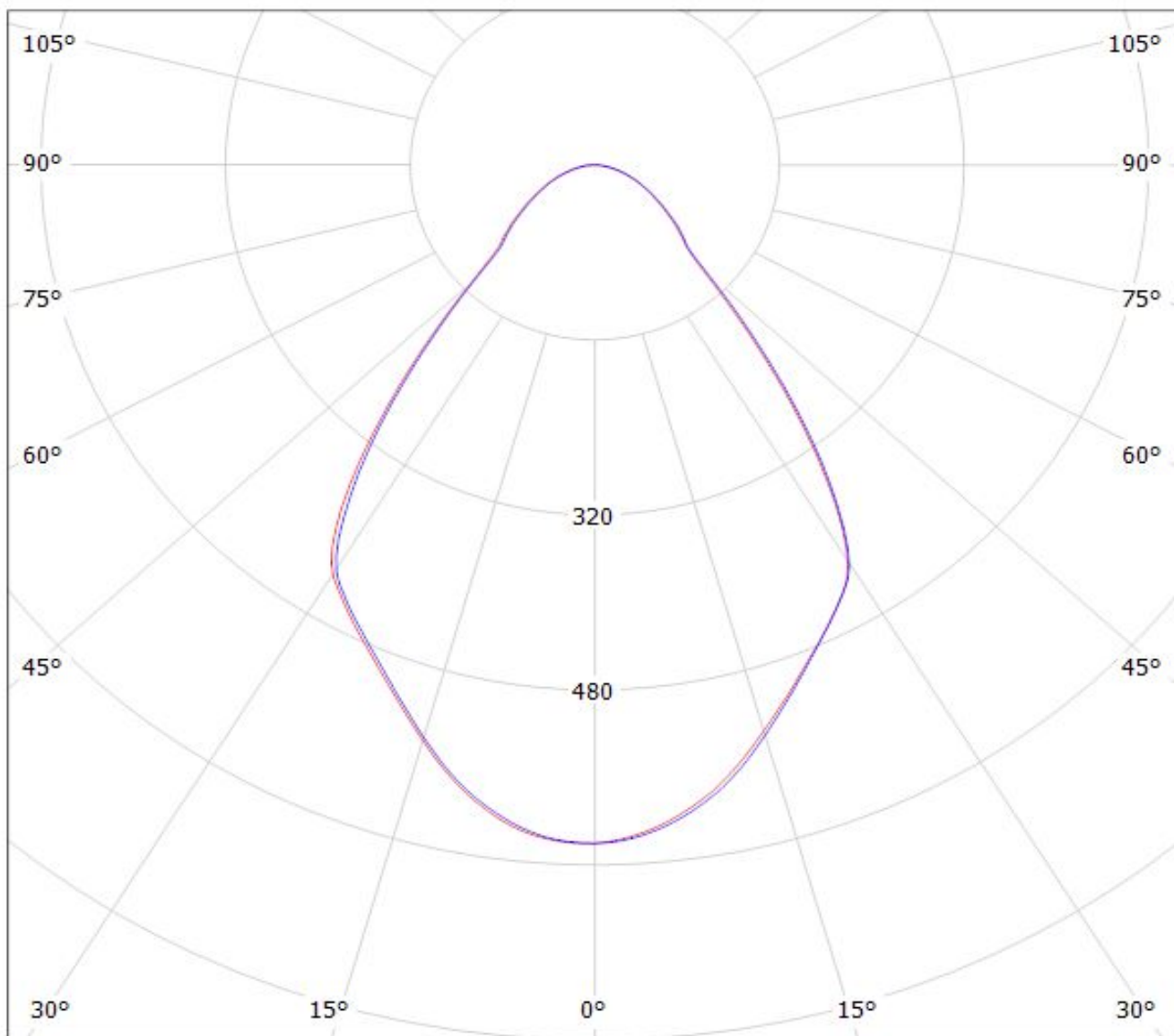
$\eta = 89\%$

Luminaire: LEDiL Oy C13806_MIRELLA-XW-PF_(COB_1203)
Lamps: 1 x Phillips_Lumileds_Luxeon_COB_1203_(LHC1-3080-1203)
_987.649lm@250mA_P=8.67381W_I=249.8mA



Luminaire: LEDiL Oy C13806_MIRELLA-XW-PF_(NFCLL060B)

Lamps: 1 x Nichia_NFCLL060B_(sm403G2450R8000)_1315.54lm@250mA_P=8.47996W_I=249.8mA



cd/klm

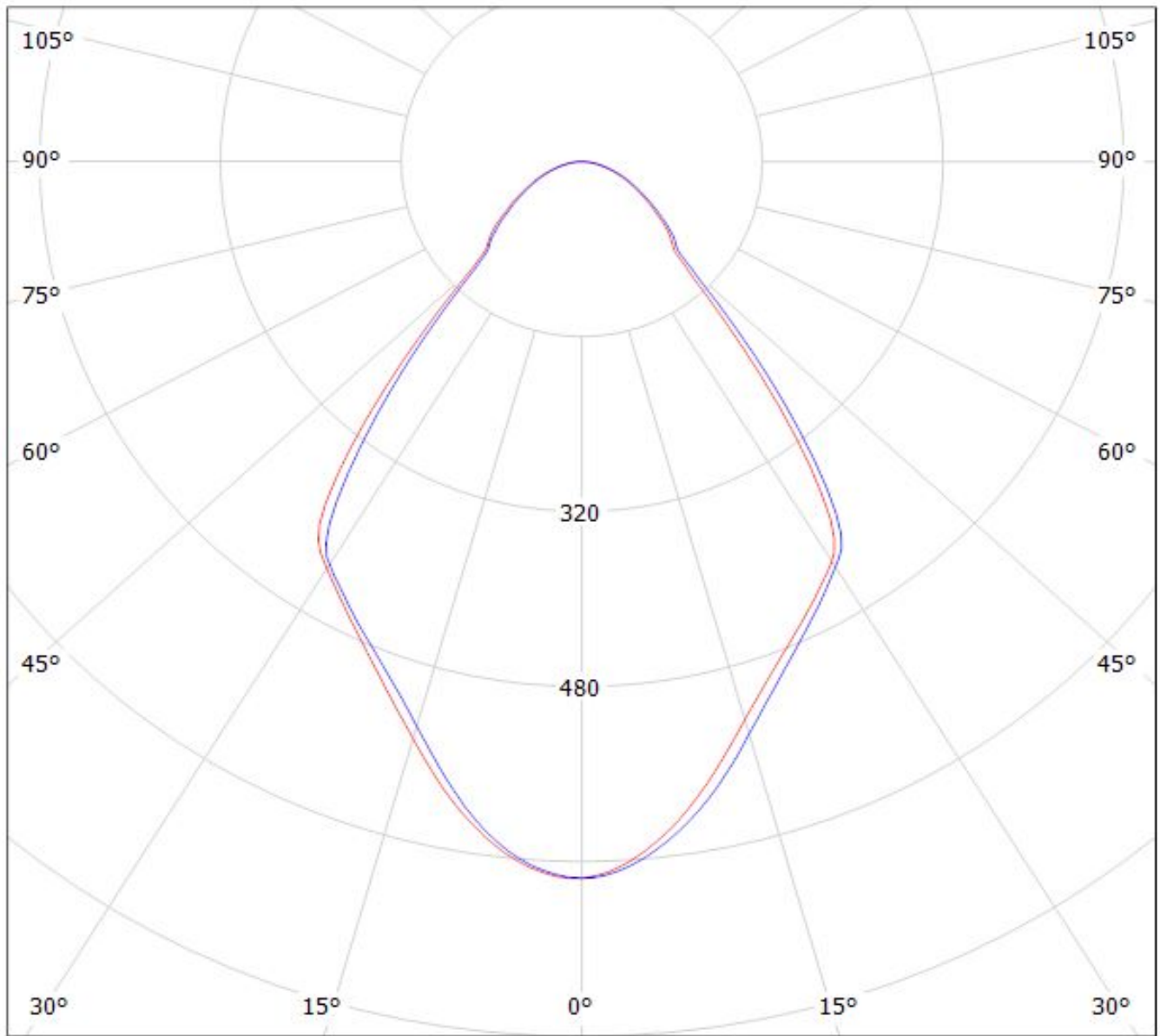
— C0 - C180

— C90 - C270

$\eta = 92\%$

Luminaire: LEDiL Oy C13806_MIRELLA-XW-PF_(NFCLL036B)

Lamps: 1 x Nichia_NFCLL036B_(sm403J1300R8000)_546.369lm@100mA_P=3.34274W_I=100.1mA



cd/klm

$\eta = 93\%$

— C0 - C180

— C90 - C270

NOTE: The typical divergence will be changed by different color, chip size and chip position tolerance. The typical total divergence is the full angle measured where the luminous intensity is half of the peak value.

GENERAL INFORMATION

- Product series especially designed & optimized for series of LEDs.
- Special care taken to make light distribution as uniform as possible.
- Reflector is made of aluminium coated PC (120 degrees of Celcius / 248 degrees of Fahrenheit) with protective lacquer (short term 100 degrees of Celcius / 212 degrees of Fahrenheit).

Note! Due to use of high power COB's with this product, special attention to proper thermal design is highly recommended. LEDiL has no liability for direct, indirect or consecutive damages arising from the LEDiL products being used outside of the recommended temperature range.