

## plastic cable glands IP 55

ISO and PG



Cable gland and with flexible blades designed for commercial applications that require IP 55 protection and a good hold on the cables

Pack	Cat.Nos	Grey RAL 7035 cable glands		
<b>ISO</b>				
Conform to EN 50262				
			Clamping capacity	
		ISO	Ø Min. (mm)	Ø Max. (mm)
50	0 968 00	12	4	6.5
50	0 968 01	16	5	10
50	0 968 03	20	10	14
50	0 968 05	25	13	18
25	0 968 06	32	18	25
10	0 968 07	40	22	32
10	0 968 08	50	30	38
10	0 968 09	63	34	44
<b>PG</b>				
Conform to UTE C 68-300 and 68-311 guides recommendations				
			Clamping capacity	
		PG	Ø Min. (mm)	Ø Max. (mm)
50	0 968 20	7	3.5	6
50	0 968 21	9	4	8
50	0 968 22	11	5	10
50	0 968 23	13.5	7	12
50	0 968 24	16	10	14
50	0 968 25	21	13	18
25	0 968 26	29	18	25
10	0 968 27	36	22	32
10	0 968 28	42	30	38
10	0 968 29	48	34	44

Pack	Cat.Nos	Grey RAL 7035 locking nuts	
<b>ISO</b>			
50	0 968 40	ISO 12	
50	0 968 41	ISO 16	
50	0 968 43	ISO 20	
50	0 968 45	ISO 25	
25	0 968 46	ISO 32	
10	0 968 47	ISO 40	
10	0 968 48	ISO 50	
10	0 968 49	ISO 63	
<b>PG</b>			
50	0 968 30	PG 7	
50	0 968 31	PG 9	
50	0 968 32	PG 11	
50	0 968 33	PG 13.5	
50	0 968 34	PG 16	
50	0 968 35	PG 21	
25	0 968 36	PG 29	
10	0 968 37	PG 36	
10	0 968 38	PG 42	
10	0 968 39	PG 48	

## plastic cable glands IP 55

ISO and PG

### ■ Cable glands

#### Characteristics

Halogen-free polyamide UL 94-V2  
 Operating temperature: - 20 °C to + 80 °C  
 Self-extinguishing 650 °C according to IEC 60695-2-11

#### Dimensions (mm)

ISO		ISO						
Cat.Nos	Threading	A max.	B	Ø D	C to flat	Ø E	Drilling Ø	
0 968 00	ISO 12	23	8	19	16	11.8	12.7	
0 968 01	ISO 16	28	15	25	22	15.8	16.2	
0 968 03	ISO 20	34	15	29	26	19.9	20.4	
0 968 05	ISO 25	36	15	35	30	24.8	25.4	
0 968 06	ISO 32	40	15	46	42	31.6	32.5	
0 968 07	ISO 40	47	18	53	52	39.8	40.5	
0 968 08	ISO 50	48	18	65	58	49.8	50.8	
0 968 09	ISO 63	55	18.5	71	66	62.6	64	

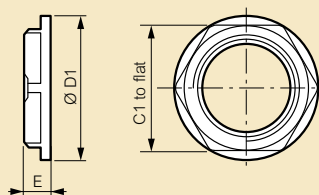
  

PG		PG						
Cat.Nos	Threading	A max.	B	Ø D	C to flat	Ø E	Drilling Ø	
0 968 20	PG 7	23	8	17	15	12.1	12.7	
0 968 21	PG 9	27	8	22	19	15.1	15.2	
0 968 22	PG 11	31	8	25	22	18.2	18.6	
0 968 23	PG 13.5	32	9	27	24	20.2	20.4	
0 968 24	PG 16	32	10	29	27	22.3	22.5	
0 968 25	PG 21	35	11	39	33	28.7	28.3	
0 968 26	PG 29	41	11	46	42	36.9	37	
0 968 27	PG 36	50	14.5	59	53	46.4	47	
0 968 28	PG 42	52	14.5	66	59	53.5	54	
0 968 29	PG 48	52	14.5	70	64	59.9	60	

### ■ Locking nuts

Glass fiber polyamide

#### Dimensions (mm)



ISO					PG				
Cat.Nos	Threading	C1 to flat	E	Ø D1	Cat.Nos	Threading	C1 to flat	E	Ø D1
0 968 40	ISO 12	17	5	19	0 968 30	PG 7	19	5	21
0 968 41	ISO 16	22	5	24	0 968 31	PG 9	22	5	24
0 968 43	ISO 20	26	6	28	0 968 32	PG 11	24	5	26
0 968 45	ISO 25	32	6	35	0 968 33	PG 13.5	26	6	28
0 968 46	ISO 32	42	7	46	0 968 34	PG 16	32	6	35
0 968 47	ISO 40	50	7	56	0 968 35	PG 21	36	7	38
0 968 48	ISO 50	60	8	66	0 968 36	PG 29	46	7	51
0 968 49	ISO 63	75	8	81	0 968 37	PG 36	60	8	66
					0 968 38	PG 42	64	8	72
					0 968 39	PG 48	69	8	77