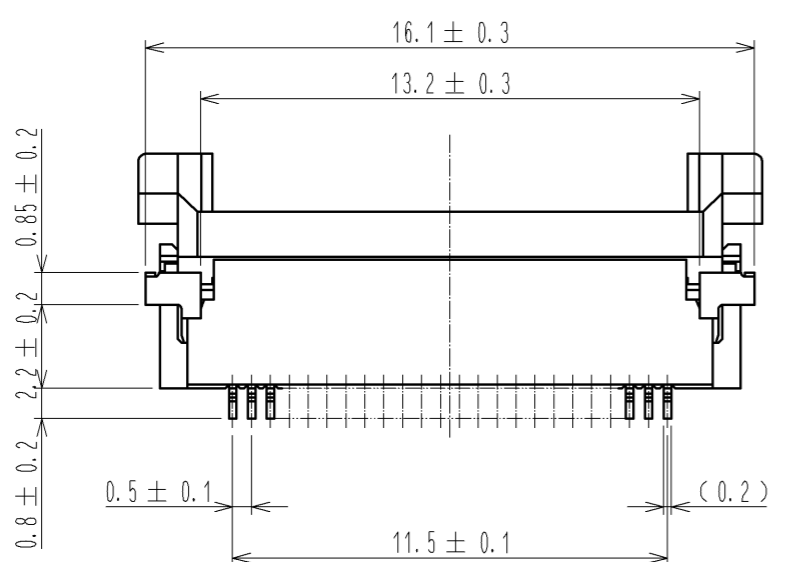
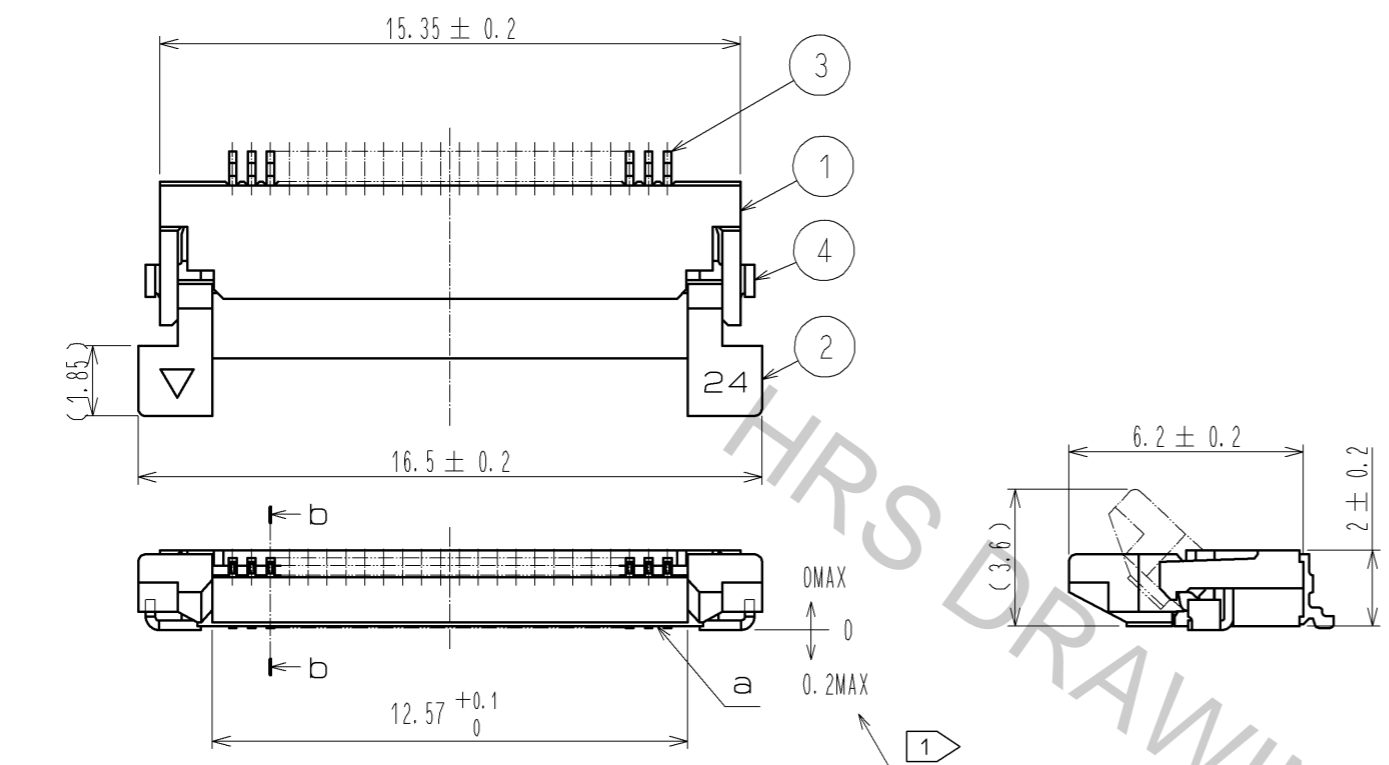
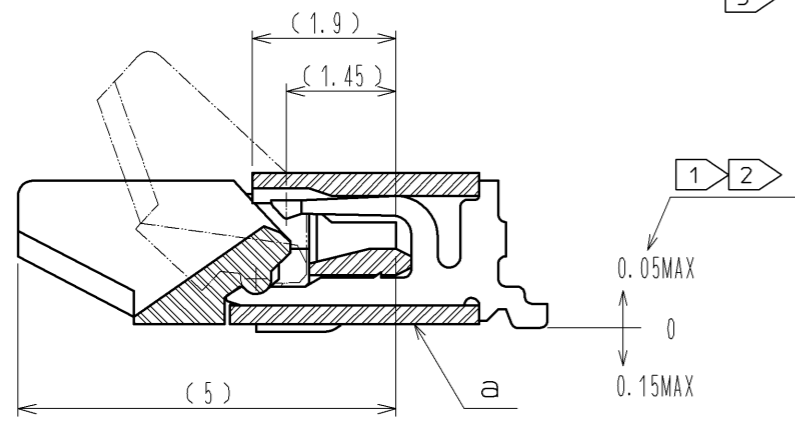


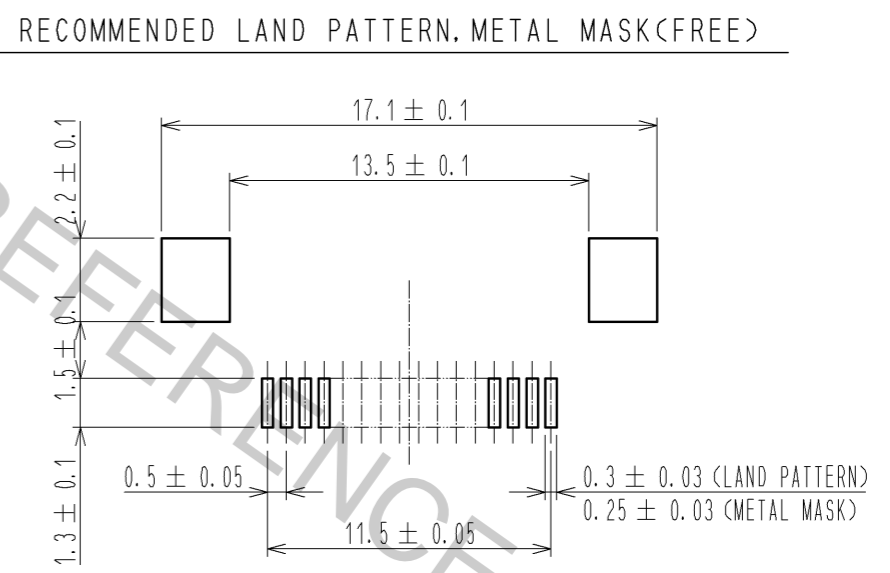
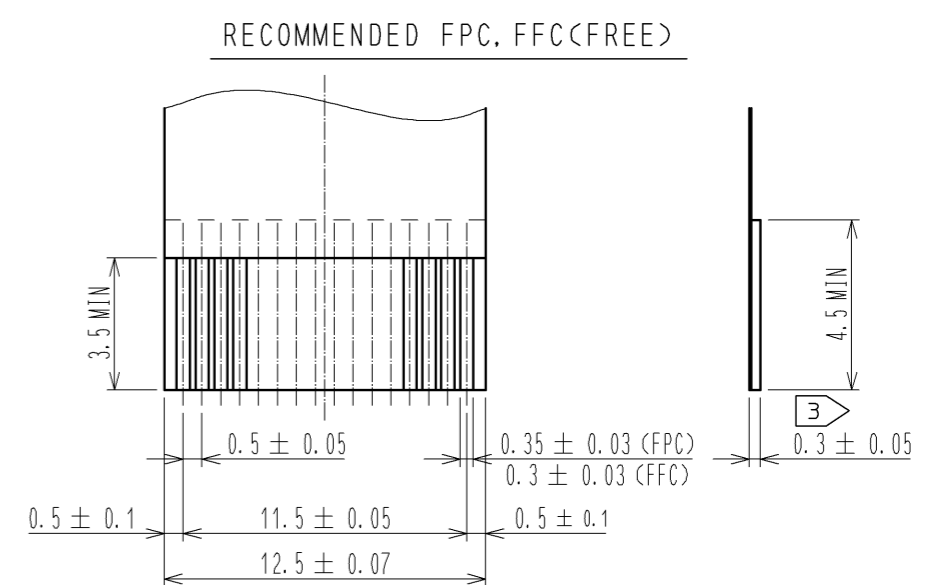
Jun.1.2018 Copyright 2018 HIROSE ELECTRIC CO., LTD. All Rights Reserved.
 In case of consideration for using Automotive equipment /
 device which demand high reliability, kindly contact our sales window correspondents.



b-b (10 : 1)



NOTE
 ① REFERENCE IS a.
 ② LEAD CO-PLANARITY SHALL BE 0.1 MAX.
 ③ THICKNESS OF SUPPORTING TAPE SHALL BE 0.188(7.5mil) MIN.

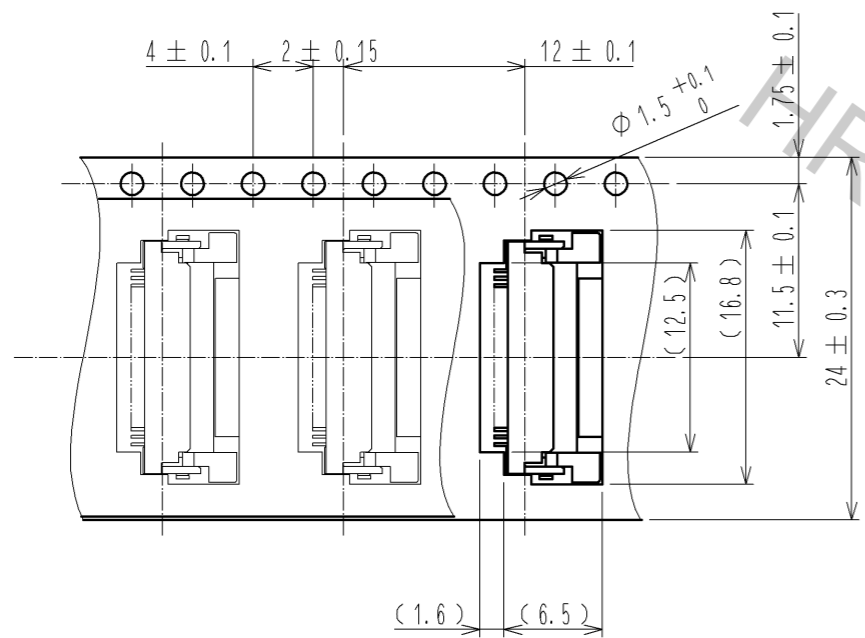


RECOMMENDED METAL MASK THICKNESS t=0.15

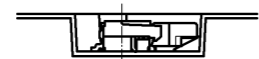
4	BRASS	TIN PLATING 1μmMIN OVER NICKEL 1μmMIN.	8	(CONNECTOR)	
3	PHOSPHOR BRONZE	GOLD PLATING 0.05μmMIN OVER NICKEL 1μmMIN.	7	POLYSTYRENE	
2	PPS	DEEP BROWN	UL94V-0	6	POLYESTER
1	POLYAMIDE	BEIGE	UL94V-0	5	POLYSTYRENE
NO.	MATERIAL	FINISH . REMARKS	NO.	MATERIAL	FINISH . REMARKS
UNITS	mm	SCALE	5 : 1	COUNT	1
APPROVED : RI. TAKAYASU			08.09.02	DESIGNED	
CHECED : HS. SAKAMOTO			08.09.01	CHECKED	
DESIGNED : MK. YASUMI			08.08.26	DATE	
DRAWN : MK. YASUMI			08.08.26	09.12.11	
DIS-F-003410				MK. YASUMI	
DESCRIPTION OF REVISIONS				EDC3-150555-51	
DRAWING NO.				FH12A-24S-0.5SH(55)	
PART NO.				CL586-0555-2-55	
CODE NO.				① 1/2	

Jun.1.2018 Copyright 2018 HIROSE ELECTRIC CO., LTD. All Rights Reserved.
 In case of consideration for using Automotive equipment /
 device which demand high reliability, kindly contact our sales window correspondents.

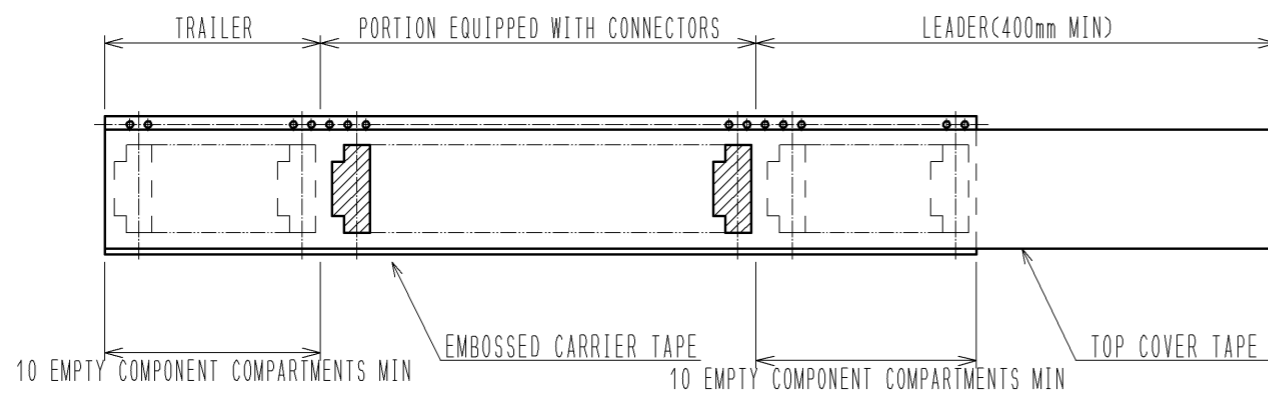
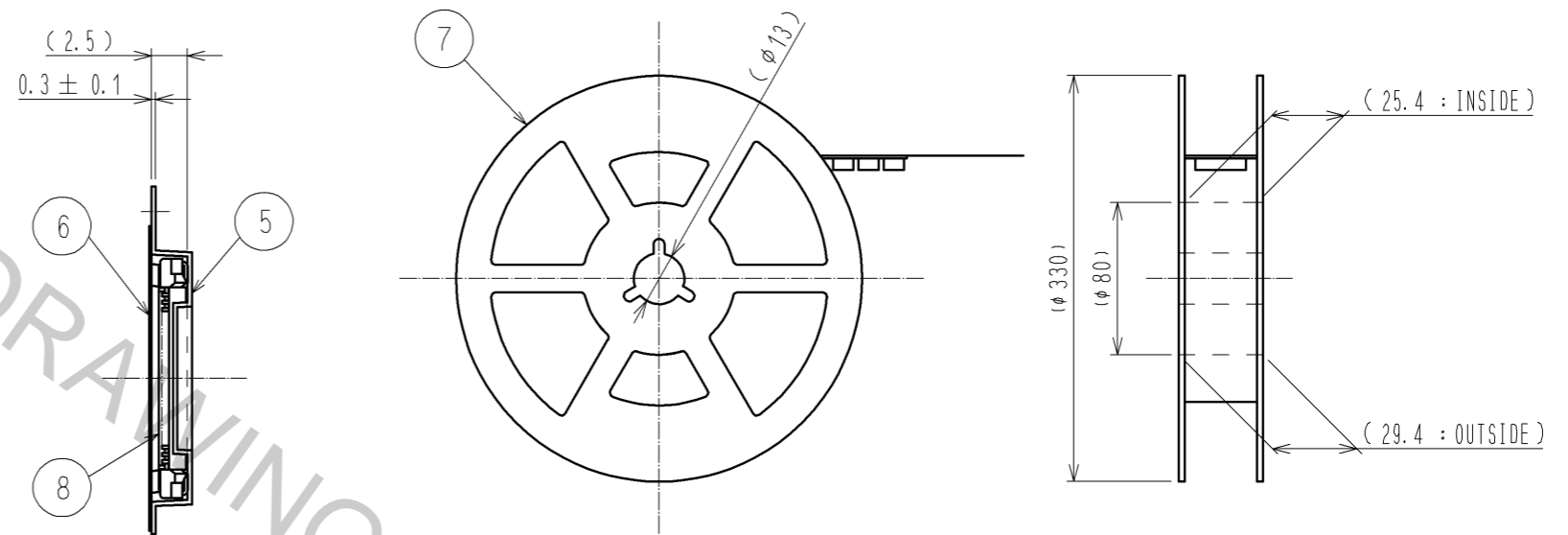
EMBOSSED CARRIER TAPE DIMENSION(2:1)



→
DIRECTION OF UNREELING



REEL DIMENSION(FREE)



NOTE 4 THE DIMENSIONS IN PARENTHESES ARE FOR REFERENCE.
 5 1 REEL:2000 CONNECTORS.

<DRAWING FOR PACKING>

HRS	DRAWING NO.	EDC3-150555-51
	PART NO.	FH12A-24S-0.5SH(55)
	CODE NO.	CL586-0555-2-55
		△ 2/2