

EVAL-AD7843CB/AD7873CB

FEATURES

- Full-Featured Evaluation Board for the AD7843/AD7873
- Eval-Board Controller Compatible
- Stand-Alone Capability
- On-Board Analog Buffering and Reference
- Various Linking Options
- Separate Analog and Digital Breadboard Areas
- PC Software for Control and Data Analysis When Used with Eval-Board Controller

INTRODUCTION

This technical paper describes the evaluation board for the AD7843 and AD7873 12-bit successive-approximation ADCs with synchronous serial interface and low ON resistance switches for driving touch screen digitizers. The parts operate from a single 2.2 V to 5.25 V supply and feature throughput rates greater than 125 kSPS. Full details on the AD7843 and AD7873 are available in the AD7843 and AD7873 data sheets, available from Analog Devices, and should be consulted in conjunction with this technical paper when using the Evaluation Board.

The board has features that allow the user to evaluate all the functions of the AD7843 or the AD7873. On-board components include an AD780, which is a pin programmable 2.5 V or 3 V ultrahigh precision bandgap reference, and two AD713 quad op amps. Various link options are explained in detail on Page 2.

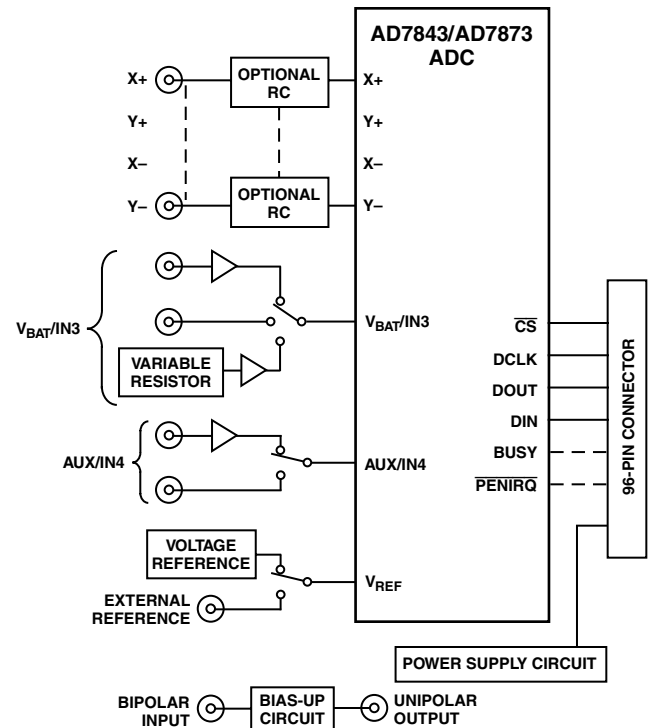
Interfacing to this board is through a 96-way connector. This 96-way connector is compatible with the Evaluation Board Controller, which is also available from Analog Devices. External sockets are provided for the optional, external, DCLK, \overline{CS} , and DIN inputs; BUSY, DOUT, and \overline{PENIRQ} outputs; VBAT and AUX inputs for the AD7873 or IN3 and IN4 inputs for the AD7843; the VIN input and VBIASED output of the bias-up circuit. External inputs are also supplied to allow the user to easily connect a 4-wire touch screen panel to the X+, X-, Y+, and Y- inputs.

OPERATING THE AD7843/AD7873 EVALUATION BOARD Power Supplies

When using this evaluation board with the Eval-Board Controller, all supplies are provided from the Eval-Board Controller through the 96-way connector.

When using the board as a stand-alone unit, external supplies must be provided. This evaluation board has five power supply inputs: V_{DD} , AGND, +12 V, -12 V, AGND. 5 V/3 V must be connected to the V_{DD} input to supply the AD7843/AD7873

FUNCTIONAL BLOCK DIAGRAM



+ V_{CC} pin. +12 V and -12 V are used to supply both of the AD713 quad op amps and the AD780 voltage reference. 0 V is connected to one or both of the AGND inputs. The supplies are decoupled to the relevant ground plane with 10 μ F tantalum and 0.1 μ F multilayer ceramic capacitors at the point where they enter the board. The supply pins of the dual op amps and reference are also decoupled to AGND with 10 μ F tantalum and a 0.1 μ F ceramic capacitors. The AD7843/AD7873 + V_{CC} supply pin is decoupled to AGND with 10 μ F tantalum and 0.1 μ F multilayer ceramic capacitors.

Extensive ground planes are used on this board to minimize the effect of high-frequency noise interference. There are two ground planes, AGND and DGND. These are connected at one location close to the AD7843/AD7873.

REV. A

Information furnished by Analog Devices is believed to be accurate and reliable. However, no responsibility is assumed by Analog Devices for its use, nor for any infringements of patents or other rights of third parties that may result from its use. No license is granted by implication or otherwise under any patent or patent rights of Analog Devices.

EVAL-AD7843CB/AD7873CB

LINK AND SWITCH OPTIONS

There are 16 link options that must be set for the required operating setup before using the evaluation board. The functions of these options are outlined below.

Link No.	Function
LK1	<p>This link option selects the source of signal applied to the IN3 pin of the AD7843 or the V_{BAT} pin of the AD7873. When this link is in position “A,” the V_{BAT} or IN3 input pin will be connected to the external socket J17, i.e., (VBAT/IN3)_BUF, and the input will be buffered.</p> <p>When this link is in position “B,” the V_{BAT} or IN3 input is provided via the external socket, J3, i.e., VBAT/IN3, and the input will be unbuffered.</p> <p>Link position “C” should only be used when the AD7873 is in use. This will connect the V_{BAT} pin to a buffered variable dc voltage ranging from approximately 0 V to 6 V.</p>
LK2	<p>This link option selects the source of signal applied to the IN4 pin of the AD7843, or the AUX pin of the AD7873.</p> <p>When this link is in position “A,” the AUX or IN4 input is provided via the external socket, J4, i.e., AUX/IN4 and the input will be unbuffered.</p> <p>When this link is in position “B” the AUX or IN4 input pin will be connected to the external socket J5, i.e., (AUX/IN4)_BUF and the input will be buffered.</p>
LK3	<p>This link selects the source of the reference voltage applied to both the AD7843/AD7873 V_{REF} pin and to the bias-up circuit. This link should be removed if the AD7873’s internal reference is to be used.</p> <p>When this link is in position “A,” the supply voltage $+V_{CC}$ is used as the reference source.</p> <p>When this link is in position “B,” an external reference can be applied via the SMB socket, J6, VREF.</p> <p>When this link is in position “C,” the output of the AD780 is selected as the reference source.</p>
LK4	<p>This link option selects the source of the DCLK input.</p> <p>When this link is in position “A,” the DCLK input is provided by the Evaluation Board Controller.</p> <p>When this link is in position “B,” the DCLK input is provided via the external socket, J9, DCLK.</p>
LK5	<p>This link option should always remain in position “A” to ensure that the reference voltage supplied to the AD7843/AD7873 is also supplied to the bias-up circuit to bias an input signal about $V_{REF}/2$. If $+V_{CC}$ is to be used as the reference source and LK3 is in position “A,” LK5 may be used in position “B.”</p>
LK6	<p>This link option is used to select the source of the +12 V supply.</p> <p>In position A, the +12 V is supplied from the Evaluation Board Controller through the 96-way connector.</p> <p>In position B, the +12 V is supplied from an external source through the power connector, J16.</p>
LK7	<p>This link option is used to select the source of the –12 V supply.</p> <p>In position A, the –12 V is supplied from the Evaluation Board Controller through the 96-way connector.</p> <p>In position B, the –12 V is supplied from an external source through the power connector, J16.</p>
LK8	<p>This link selects the source of the $+V_{CC}$ supply to the AD7843/AD7873.</p> <p>When this link is in position “A,” the $+V_{CC}$ must be supplied from an external source via J15.</p> <p>When this link is in position “B,” the $+V_{CC}$ is supplied from the Evaluation Board Controller.</p>
LK9	<p>This link option selects the source of the \overline{CS} input.</p> <p>When this link is in position “A,” the \overline{CS} input is provided by the Evaluation Board Controller.</p> <p>When this link is in position “B,” the \overline{CS} input is provided via the external socket, J10, \overline{CS}.</p>
LK10	<p>This link option selects the source of the DIN input to the AD7843/AD7873.</p> <p>When this link is in position “A,” DIN will be provided by the Evaluation Board Controller.</p> <p>When this link is in position “B,” DIN must be provided via the socket J11, DIN.</p>
LK11	<p>This link connects the BUSY pin of the AD7843/AD7873 to either the Evaluation Board Controller or an external socket. It must be connected for use with the Evaluation Board Controller with the software supplied.</p> <p>When this link is in position “A,” the BUSY pin is selected as the source of the RFS input on the Evaluation Board Controller.</p> <p>When this link is in position “B,” the BUSY pin is connected to the external socket J12, BUSY, as an output for stand-alone operation.</p>

Link No.	Function
LK12	This link connects the DOUT pin of the AD7843/AD7873 to either the Evaluation Board Controller or an external socket. When this link is in position “A,” the DOUT pin is connected to the Evaluation Board Controller. When this link is in position “B,” the DOUT pin is connected to the external socket J13, DOUT.
LK13	This link connects the $\overline{\text{PENIRQ}}$ pin of the AD7843/AD7873 to either the Evaluation Board Controller or an external socket. When this link is in position “A,” the $\overline{\text{PENIRQ}}$ pin is selected as the source of the IRQ2 interrupt on the Evaluation Board Controller if desired for use. When this link is in position “B,” the $\overline{\text{PENIRQ}}$ pin is connected to the external socket J14, $\overline{\text{PENIRQ}}$ as an output for stand-alone operation.
LK14	This link option is used to connect the input of the analog input buffer to the input socket J17, (VBAT/IN3)_BUF, or to tie the analog buffer input to AGND. When this link is in position “A,” the input socket J17, (VBAT/IN3)_BUF, is connected to the input of the buffer. When this link is in position “B,” the input of the buffer is connected to AGND.
LK15	This link option controls the program pin of the AD780 voltage reference. When this link is “inserted,” the AD780 output voltage is set to 3.0 V. When this link is “removed,” the AD780 output voltage is set to 2.5 V.
LK16	This link option is used to connect the input of the analog input buffer to the input socket J5, (AUX/IN4)_BUF, or to tie the analog buffer input to AGND. When this link is in position “A,” the input socket J5, (AUX/IN4)_BUF, is connected to the input of the buffer. When this link is in position “B,” the input of the buffer is connected to AGND.

SET-UP CONDITIONS

Care should be taken before applying power and signals to the evaluation board to ensure that all link positions are as per the

required operating mode. Table I shows the position in which all the links are set when the evaluation board is shipped. The board is compatible with the Eval-Board Controller when shipped.

Table I. Initial Link and Switch Positions

Link No.	Position	Function
LK1	A	The IN3 pin on the AD7843, or the V_{BAT} pin on the AD7873, is connected to J17, i.e., VBAT/IN3_BUF and the input will be buffered.
LK2	B	The IN4 pin on the AD7843, or the AUX pin on the AD7873, is connected to J5, i.e., AUX/IN4_BUF and the input will be buffered.
LK3	C	AD780 is selected to provide the reference voltage for the AD7843/AD7873.
LK4	A	DCLK supplied by the Evaluation Board Controller via J2.
LK5	A	The reference voltage supplied to the AD7843/AD7873 is also supplied to the bias-up circuit to bias an input signal about $V_{\text{REF}}/2$.
LK6	A	+12 V supplied from the Evaluation Board Controller via J2.
LK7	A	–12 V supplied from the Evaluation Board Controller via J2.
LK8	B	+ V_{CC} supplied by the Evaluation Board Controller via J2.
LK9	A	$\overline{\text{CS}}$ supplied by the Evaluation Board Controller via J2.
LK10	A	DIN is provided to the AD7843/AD7873 from the Evaluation Board Controller via J2.
LK11	A	The BUSY output is used as the source of the RFS input on the Evaluation Board Controller when running the AD7843/AD7873 evaluation board with the software provided.
LK12	A	DOUT is provided to the Evaluation Board Controller from the AD7843/AD7873 via J2.
LK13	Removed	The $\overline{\text{PENIRQ}}$ output is not used when running the AD7843/AD7873 evaluation board with the software provided.
LK14	B	The input of the VBAT/IN3_BUF buffer is tied to AGND.
LK15	Removed	AD780 is set to provide a 2.5 V reference.
LK16	B	The input of the AUX/IN4_BUF buffer is tied to AGND.

EVAL-AD7843CB/AD7873CB

EVALUATION BOARD INTERFACING

Interfacing to the evaluation board is via a 96-way connector, J2. J2 is used to connect the evaluation board to the Eval-Board Controller or other system. The pinout for the J2 connector is shown in Figure 2 and its pin designations are given in Table II.

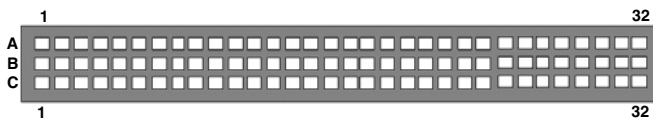


Figure 1. Pin Configuration for the 96-Way Connector, J2

96-WAY CONNECTOR PIN DESCRIPTION

Pin	Description
DT0	Data Transmit Zero. This output is connected to the DIN pin of the AD7843/AD7873 via LK10.
DR0	Data Receive Zero. This input is connected to the DOUT pin of the AD7843/AD7873 via LK12 and two inverting buffers.
SCLK0	Serial Clock Zero. This serial clock is connected to the DCLK pin of the AD7843/AD7873 via an inverting buffer and LK4.
TFS0	Transmit Frame Sync Zero. This output is connected to the \overline{CS} pin of the AD7843/AD7873 via LK9.
RFS0	Receive Frame Sync Zero. This input is connected to the BUSY output pin of the AD7843/AD7873 via LK11.
IRQ2	Interrupt Request 2. This is a logic input and may be connected to the \overline{PENIRQ} logic output on the AD7843/AD7873 via LK13. This is not used with the software provided with the Evaluation Board Controller.
DGND	Digital Ground. These lines are connected to the digital ground plane on the evaluation board. It allows the user to provide the digital supply via the connector along with the other digital signals.
AGND	Analog Ground. These lines are connected to the analog ground plane on the evaluation board.
AV _{DD}	Analog 5 V Supply. These lines are connected to the V _{DD} supply line on the board via LK8.
+12 V	+12 V Supply. This line is connected to the +12 V supply line on the board via LK6.
-12 V	-12 V Supply. This line is connected to the -12 V supply line on the board via LK7.

Table II. 96-Way Connector* Pin Functions

	Row A	Row B	Row C
1			
2			
3			
4	DGND	DGND	DGND
5	DT0		DR0
6	TFS0		RFS0
7			
8			
9			
10			
11			
12	DGND	DGND	DGND
13			
14			
15			
16	DGND	DGND	DGND
17			IRQ2
18			
19			
20	DGND	DGND	DGND
21	AGND	AGND	AGND
22	AGND	AGND	AGND
23	AGND	AGND	AGND
24	AGND	AGND	AGND
25	AGND	AGND	AGND
26	AGND	AGND	AGND
27		AGND	
28		AGND	
29	AGND	AGND	AGND
30	-12 V	AGND	+12 V
31			
32	AVDD	AVDD	AVDD

*The unused pins of the 96-way connector are not shown.

SOCKETS

There are 13 input sockets relevant to the operation of the AD7843/AD7873 on this evaluation board. The function of these sockets is outlined in Table III.

Table III. Socket Functions

Socket	Function
J3	Subminiature BNC Socket for IN3 or V _{BAT} Analog Input
J4	Subminiature BNC Socket for IN4 or AUX Analog Input
J5	Subminiature BNC Socket for IN4 or AUX Analog Input via a Buffer on Board
J6	Subminiature BNC Socket for External Reference Input
J7	Subminiature BNC Socket for Analog Input to Bias-Up Circuit
J8	Subminiature BNC Socket for Analog Output from Bias-Up Circuit
J9	Subminiature BNC Socket for External DCLK Input
J10	Subminiature BNC Socket for External \overline{CS} Input
J11	Subminiature BNC Socket for External DIN Input
J12	Subminiature BNC Socket for BUSY Output
J13	Subminiature BNC Socket for DOUT Output
J14	Subminiature BNC Socket for \overline{PENIRQ} Output
J17	Subminiature BNC Socket for IN3 or V _{BAT} Analog Input via a Buffer on Board

EVAL-AD7843CB/AD7873CB

CONNECTORS

There are four connectors on the AD7843/AD7873 evaluation board as outlined in Table IV.

Table IV. Connector Functions

Connector	Function
J1	External Connector for X+, Y+, X-, and Y- 4-Wire Touch Screen
J2	96-Way Connector for Parallel Interface Connections
J15	External VDD and AGND Power Connector
J16	External +12 V, -12 V and 0 V Power Connector

OPERATING WITH THE EVAL-BOARD CONTROLLER

The evaluation board can be operated in a stand-alone mode or operated in conjunction with the Eval-Board Controller. The Eval-Board Controller is available from Analog Devices under the order entry "EVAL-CONTROL BRD2." When operated with this control board, all supplies and control signals to operate the AD7843/AD7873 are provided by the Eval-Board Controller. Software to communicate with the Control Board

and AD7843/AD7873 is provided with the AD7843/AD7873 evaluation board package. This Eval-Board Controller will also operate with all Analog Devices evaluation boards that end with the letters CB in their title.

The 96-way connector on the EVAL-AD7843CB/AD7873CB plugs directly into the 96-way connector on the Eval-Board Controller. The Eval-Board Controller provides all the supplies for the evaluation board. It is powered from a 12 V AV transformer. Suitable transformers are available from Analog Devices as an accessory under the following part numbers:

EVAL-110VAC-US: For use in the U.S. or Japan

EVAL-220VAC-UK: For use in the U.K.

EVAL-220VAC-EU: For use in Europe

These transformers are also available for other suppliers including Digikey (U.S.) and Campbell Collins (U.K.).

Connection between the Eval-Board Controller and the serial port of a PC is via a standard Centronics printer port cable that is provided as part the Eval-Board Controller package. For more details on the Eval-Board Controller package, please refer to the manual that accompanies the Eval-Board Controller.

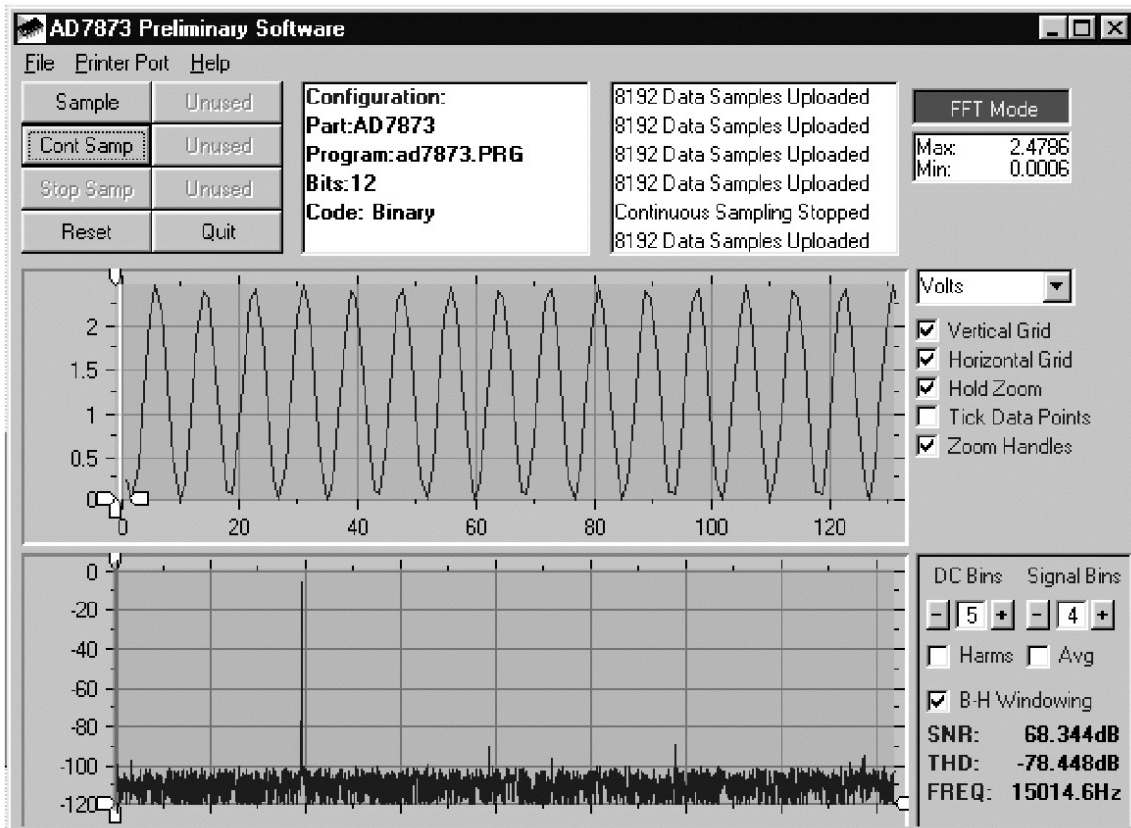


Figure 2. AD7873 Main Screen

EVAL-AD7843CB/AD7873CB

SOFTWARE DESCRIPTION

The software that controls the Evaluation Board Controller, and hence the evaluation board, has three main screens. The screen shown in Figure 2 shows the screen that appears when the software is run. The main function of this screen is to allow the user to read a predetermined number of samples from the evaluation board and display them in both the time and frequency domain. The screen can be divided into three sections. The upper third of the screen contains the control buttons, the menu bar, and various status windows. The control buttons allow the user to enter the setup menu, take samples, and obtain information about the software. The menu bar allows the user to select which printer port is to be used to control the Evaluation Board Controller, load and save data, etc. The status windows indicate the setup of the evaluation board/device, number of samples taken, and any information/error messages that are generated.

The middle third of the screen is a Digital Storage Oscilloscope (DSO). When samples are uploaded from the Evaluation Board Controller they are displayed here. The samples can be displayed either as integer values or as voltages (determined by the input range of the device in question). Once samples have been displayed, clicking at any point in the graph will display the sample number and value of the point directly beneath the cursor. Along the axis of the graph are the “zoom handles.” These allow the user to zoom in and out to get a closer look at a particular sample if required. When another set of samples is taken, the

graph will attempt to display all values collected unless the *Hold Zoom* check box is ticked. In this case the graph will keep the same axis settings as for the previous set of data samples. Additional check boxes are provided to give the user control over the vertical and horizontal grids and data points.

The lower third of the screen will show either a Fast Fourier Transform (FFT) of the data or a Histogram that shows the number of occurrences of each particular code readback. The FFT (the default option) is typically used when the user is concerned with examining an ADC’s performance in the frequency domain while the Histogram will give an indication of the ADC’s performance to dc signals. The option displayed can be toggled by clicking on the FFT Mode/Histogram Mode button in the top right of the screen. Figure 3 shows how the main screen looks when the Histogram Option is selected.

Setup Screen

The Setup Screen is responsible for allowing the user to load a configuration file for the evaluation board. The configuration file will give the software detailed information about the evaluation board and part connected to the Evaluation Board Controller such as number of bits, maximum sampling rate, power supply requirements, etc. The configuration file also tells the software the name of the DSP program file it should download to the Evaluation Board Controller. These files are supplied by Analog Devices with the evaluation board. Figure 4 shows the Setup Screen.

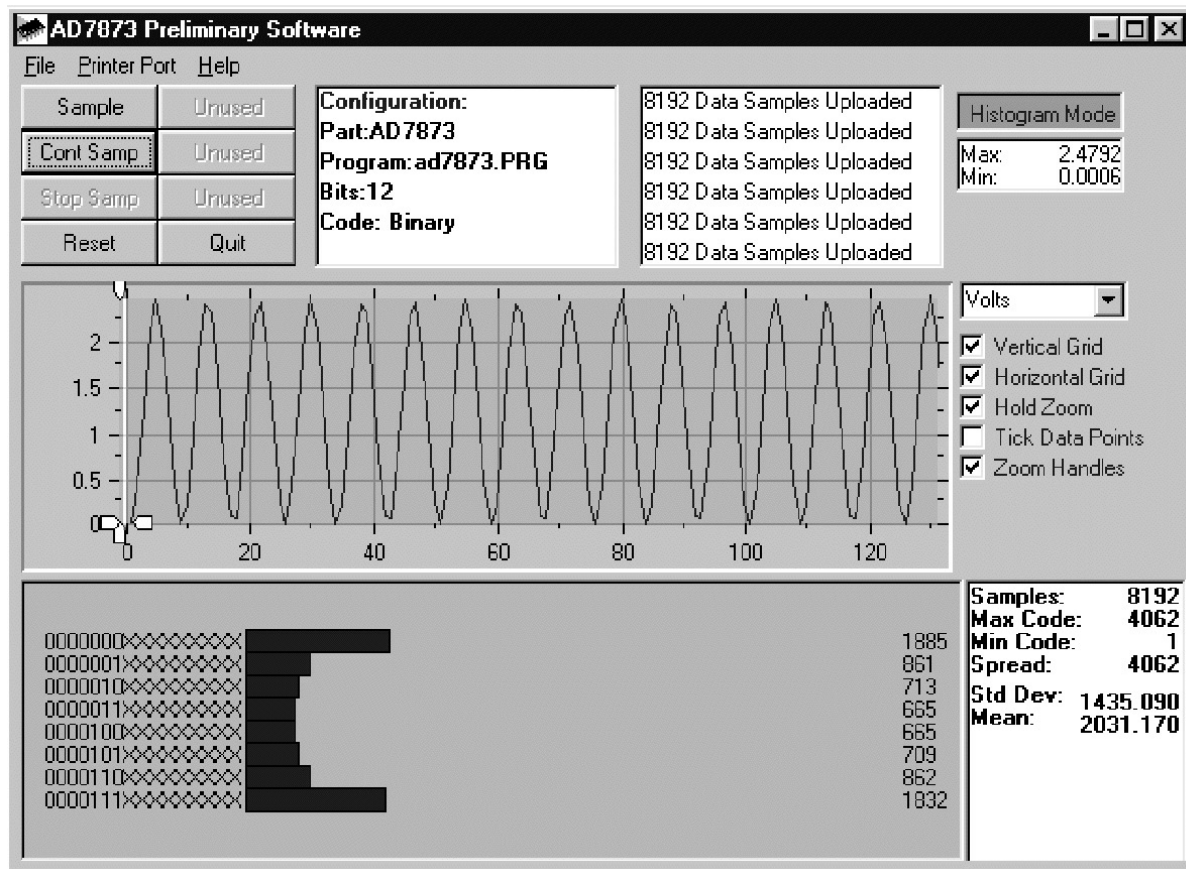


Figure 3. AD7873 Main Screen—Histogram Mode

SETTING UP THE EVALUATION BOARD CONTROLLER

The following text describes how the evaluation board Evaluation Board Controller and software should be set up for the user to begin using the complete system. The Evaluation Board Controller and evaluation board should be connected together (via the 96-way connector). The power should be applied to the Evaluation Board Controller. At this stage the red LED should be flashing, which indicates that the Evaluation Board Controller is functional and ready to receive instructions. The software that should have been installed should be loaded before the printer port cable is connected between the Evaluation Board Controller and the PC. This will ensure that the printer port has been properly initialized. The printer port cable can then be connected between the PC and the Evaluation Board Controller.

Running the Software

With the hardware set up, the user is now in a position to use the software to control the Evaluation Board Controller and evaluation board. In the software, the user should select the *File* menu and click on *Setup*. This will display the setup form. A window on the left of the setup form lists all the available configuration files. The configuration files are text-based files that contain information about the particular evaluation board to be tested. The information will cover such things as the part name, number of samples to be taken, default and maximum sampling frequency power supply settings, etc. The configuration file also contains the name of the DSP program file to be downloaded to the Evaluation Board Controller. The user should select the relevant configuration file and click *Load*. The Evaluation Board

Controller will be reset and the DSP program will be downloaded. When the download has been completed, the power supply settings indicated in the configuration file are set and the user may hear some of the relays clicking. The pull-down menus items, such as number of samples and sampling frequency, will have been set to the default values specified by the configuration file. The user is free to change these at will. This also includes the Channel selection. Once all the settings have been decided, the user can click *Close* to return to the main form.

Taking Samples

When the user clicks *Sample*, the software will instruct the Evaluation Board Controller to take the required number of samples at the required frequency from the evaluation board. The AD7873/AD7843 evaluation board will only run at a sample rate of 125 kSPS, so the user cannot change the sampling frequency but may still choose the required number of samples. These samples are then uploaded and displayed. An FFT and Histogram are also calculated and displayed. If the user clicks *Cont Samp*, the software will repeat the process indefinitely until the user clicks the button again. While the software is continuously sampling data the other control buttons are disabled.

Other Buttons

The *Reset* button will cause the Evaluation Board Controller to perform a reset function. When this happens, the power supplies are turned off and the program in DSP memory is lost. The user should repeat the setup instructions to download another program if required.

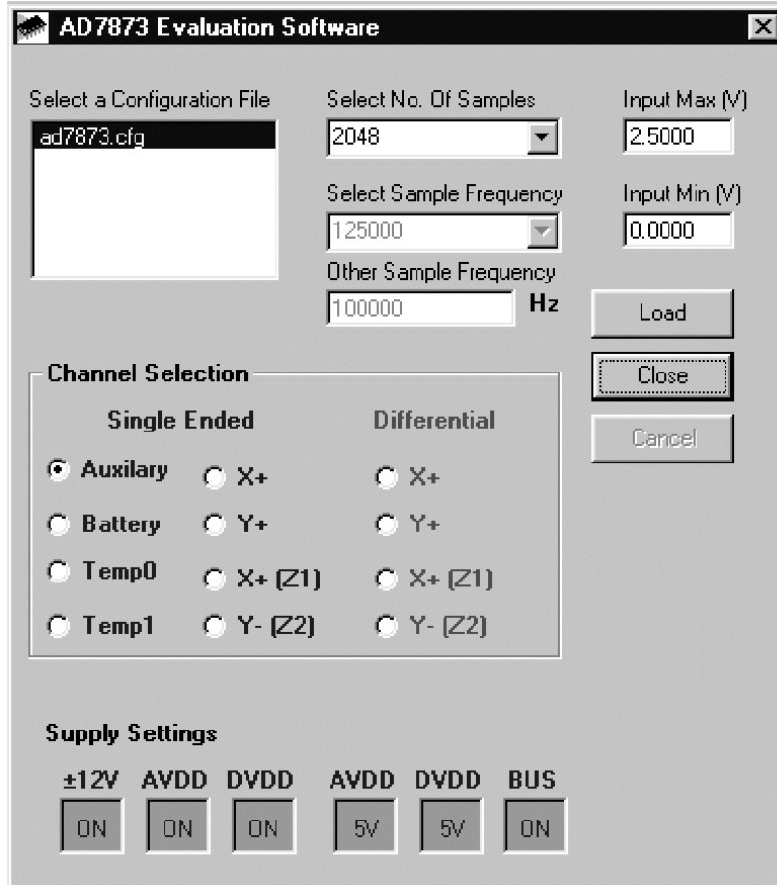


Figure 4. The Setup Screen

EVAL-AD7843CB/AD7873CB

The *Quit* button will exit the software, the program running on the Evaluation Board Controller is not terminated.

MENU BAR ITEMS

The main screen of the Evaluation Board Controller contains a number of options available as pull-down menu items. The functions of these are listed below.

File Menu

Setup Menu: Selecting this option displays the Setup Screen as shown in Figure 4.

Load Raw Data: Selecting this option allows the user to load data that had been saved by the software during a previous session.

Save Raw Data: Selecting this option allows the user to save the current set of sample data points. The data can be reloaded to the Evaluation Board Controller software at a later date or can be used by other programs for further analysis.

Save Binary Data: Selecting this option allows the user to save the current set of sample data points. The data is saved in binary format as a text file. This method can be useful for examining code flicker, looking for stuck bits, etc.

Save FFT Data: Selecting this option allows the user to save the current set of FFT data points. FFT data cannot be reloaded into the Evaluation Board Controller software but can be loaded into other software packages for further analysis.

Exit: Quits the program.

Printer Port

This menu item allows the user to select which printer port should be used for communication with the Evaluation Board Controller.

LPT1: This option selects 0x378 as the printer port address. This is the default option.

LPT2: This option selects 0x278 as the printer port address.

PRN: This option selects 0x3BC as the printer port address.

Help

This menu item gives information about the current revision of software for the particular evaluation board being used.

SOFTWARE CONFIGURATION FILES

Software Configuration Files give the Evaluation Board Controller software information on how the software and hardware should perform. They contain information such as the name of the DSP program to download, the default and maximum sample frequencies, the number of samples to take, and the power supply settings to use. A typical Software Configuration File (*.cfg) is shown in Listing 1.

```
[EVAL-CONTROL BOARD]
partname:AD7873
programname:ad7873.PRG

samplefrequency:125000
maxsamplefrequency:125000
samples:2048

+/-15V:on
dvdd:5:on
avdd:5:on
bus:on
;options 2scomp, binary
dataformat:binary
numberofbits:12
inputVmax:2.5
inputVmin:0
```

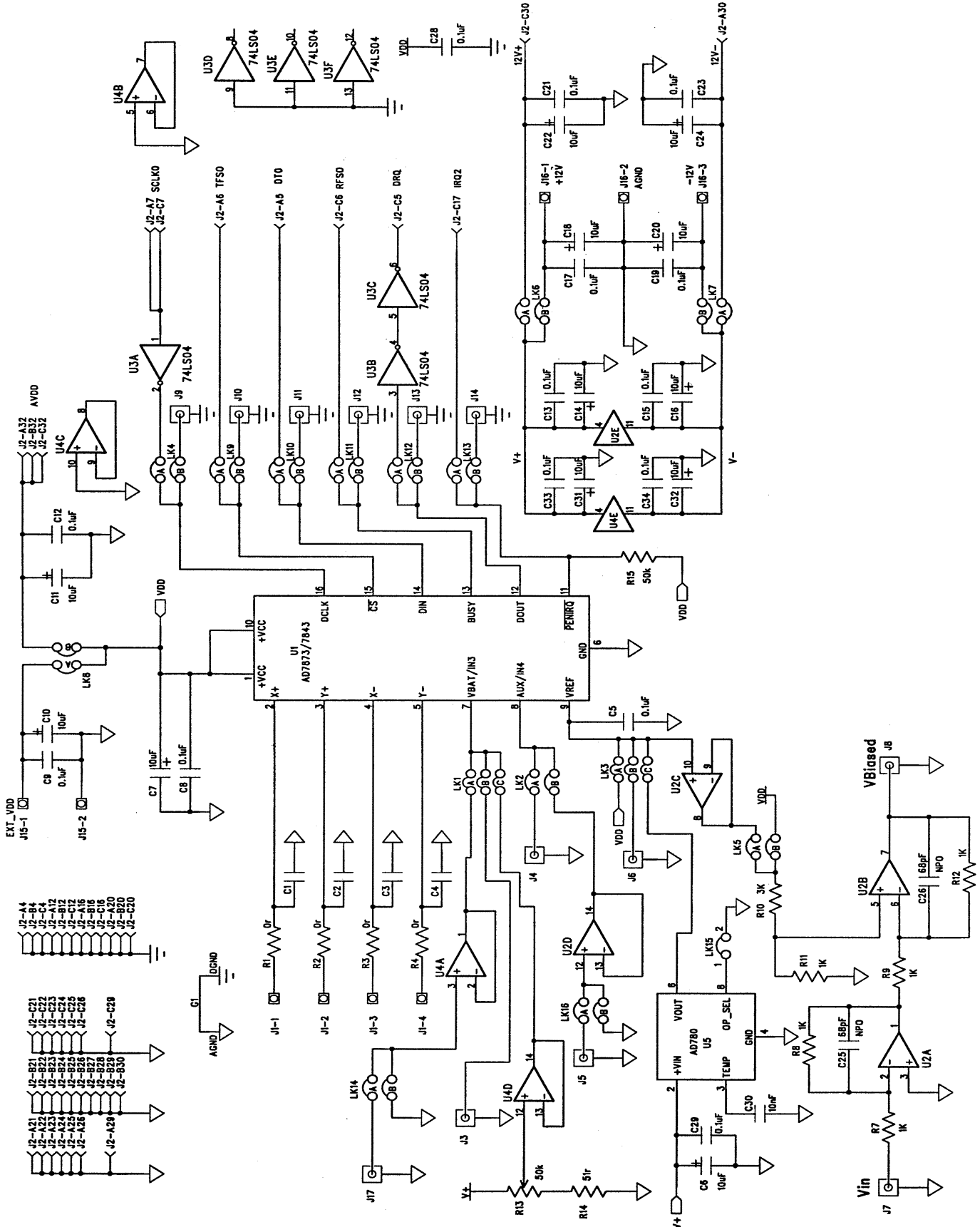


Figure 5. AD7843/AD7873 Evaluation Board Circuit Diagram

EVAL-AD7843CB/AD7873CB

Table V. AD7843/AD7873 Evaluation Board Bill Of Materials

Qty.	Part Type	Ref Des	Manuf/Disti	Order Number
1	AD7873AR/AD7843AR	U1	ADI	AD7873/43AR
2	AD713JN	U2, U4	ADI	AD713JN
1	AD780AN	U5	ADI	AD780AN
1	DM74LS04N	U3	Fairchild	FEC 373-450
4	Optional	C1, C2, C3, C4		
12	10 μ F, 10 V (TAJ-B Series)	C6, C7, C10, C11, C14, C16, C18, C20, C22, C24, C31, C32	AVX	FEC 498-660
14	0.1 μ F 50 V X7R (0805 Size)	C5, C8, C9, C12, C13, C15, C17, C19, C21, C23, C28, C29, C33, C34	AVX	FEC 499-687
1	0.01 μ F 50 V X7R (0805 Size)	C30	AVX	FEC 499-225
2	68 pF 50 V NPO	C25, C26	BC Components	FEC 722-066
4	0 Ω	R1, R2, R3, R4	Multicomp	FEC 508-792
5	1 k Ω \pm 1% (0805 Size)	R7, R8, R9, R11, R12	Multicomp	FEC 911-859
1	3 k Ω \pm 1% (0805 Size)	R10	Multicomp	FEC 711-399
1	51 Ω \pm 1% (0805 Size)	R14	Multicomp	FEC 771-181
1	51 Ω \pm 1%	R15	Multicomp	FEC 770-462
1	50 k Ω Multiturn Trimmer Pot	R13	Bourns	FEC 988-297
1	6-(2+3) Pin Header	LK1*	Harwin	FEC 511-780
1	6-(2+3) Pin Header/4 (2+2)-Pin Header	LK3	Harwin	FEC 511-780/511-791
12	4-(2+2) Pin Header	LK2-LK14	Harwin	FEC 511-791
1	2-Pin Header	LK15	Harwin	FEC 511-705
15	Shorting Link	LK1-LK15	Berg	FEC 528-456
66	Ultralow Profile Sockets	U2, U3, U4, U5, C1-C4, R1-R4	Harwin	FEC 519-959
2	6-Pin Terminal Block	J1	Lumberg	FEC 151-786
1	96-Pin 90° DIN41612 Plug	J2	Siemens	FEC 269-931
12	Gold 50 Ω SMB Jack	J3-J14	M/ACOM	FEC 310-682
1	2-Pin Terminal Block	J15	Lumberg	FEC 151-785
1	3-Pin Terminal Block	J16	Lumberg	FEC 151-786
4	Stick-On Feet	Each Corner	3M	FEC 148-922
1	PCB	EVAL-AD7873/43CB		N/A

NOTES

LK1* 6 (2+3) pin header inserted for the AD7873CB board.

LK1* 6 (2+2) pin header inserted for the AD7843CB board.

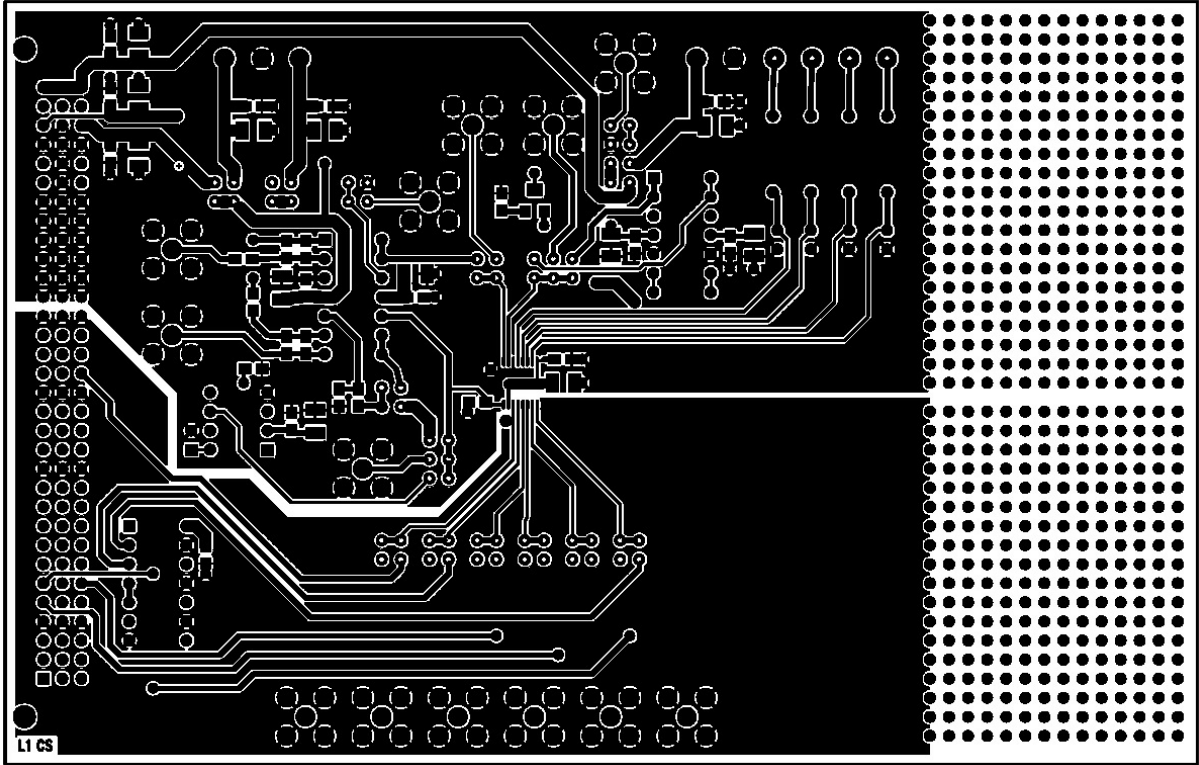


Figure 6. Component Side Artwork

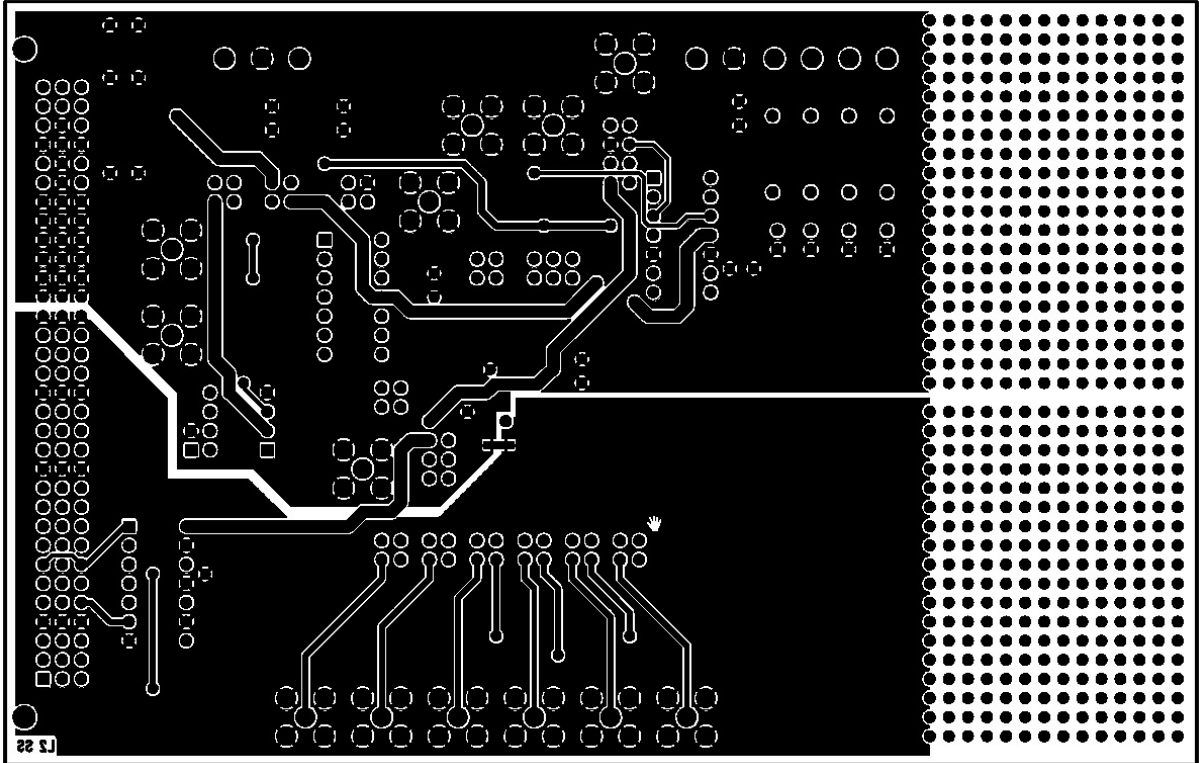


Figure 7. Solder Side Artwork

EVAL-AD7843CB/AD7873CB

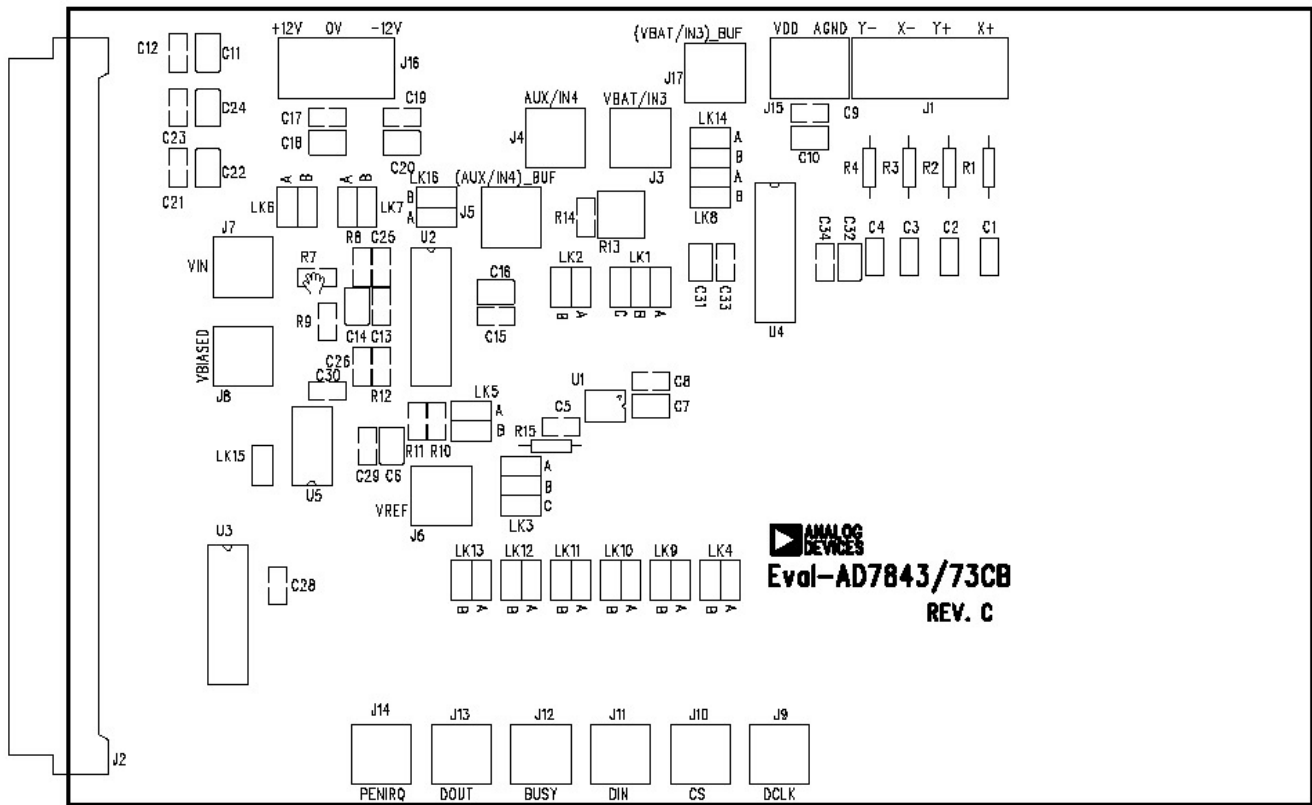


Figure 8. AD7843/AD7873 Evaluation Board Component Placement Drawing

C02549-0-1/02(A)

PRINTED IN U.S.A.