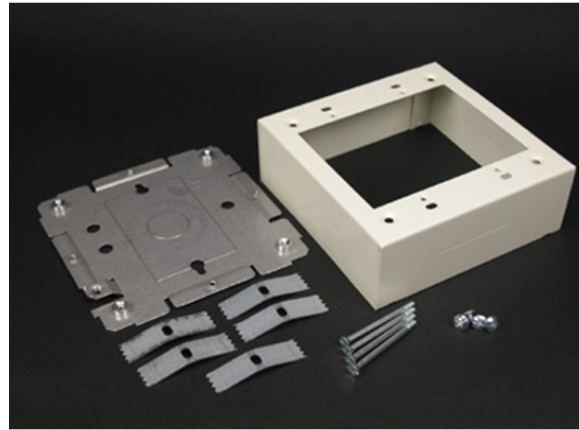


2400 Device Box Fitting

V2448-2, 2448-2FW



Two-gang device box. Cover has twistouts on all four sides for 2400 Series Raceway. Base has knockout to enable extension from existing single-gang, flush wall box and 1/2" trade size KOs. Accepts industry standard faceplates for electrical and communication devices. NOTE: Accepts NEMA double-gang standard faceplates. Certified to Canadian Safety Standards for sale in Canada. When ordering this product for Canada, add "C" to the beginning of the part number to denote Canadian versions, i.e. "CV2444" or "C2444-FW".

features & benefits

specifications

General Info

Available Colors:

V2448-2 - Ivory

2448-2FW - Fog White

Product Series: 2400
Component Type: Boxes

Technical Information

Material: Steel

Capacity: Dual-Channel