

PowerLogic® EGX100 Ethernet® Gateway

*Simple, cost effective serial line to
Ethernet connectivity*

From a single building to a multi-site enterprise, the EGX100 provides cost effective, reliable serial line to Ethernet connectivity in the most demanding applications:

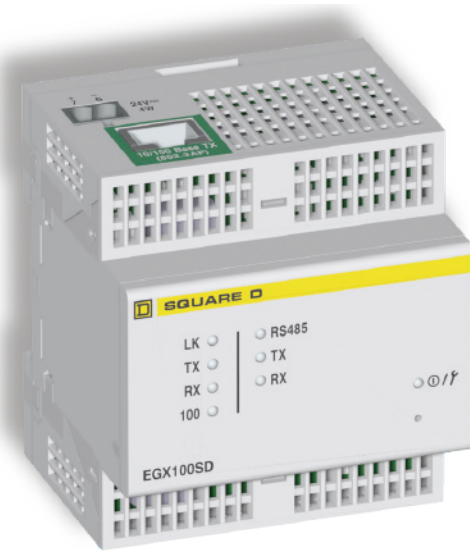
- Energy management
- Power distribution
- Building automation
- Factory automation

New internet technologies and services used in industry are opening extraordinary new horizons in remote control and maintenance. The Power-Over-Ethernet enabled EGX100 provides fast, reliable Ethernet to serial line connectivity between intelligent meters, sensors, and other remote instruments. In most cases the existing LAN infrastructure can be used, greatly reducing communications wiring and network management costs.

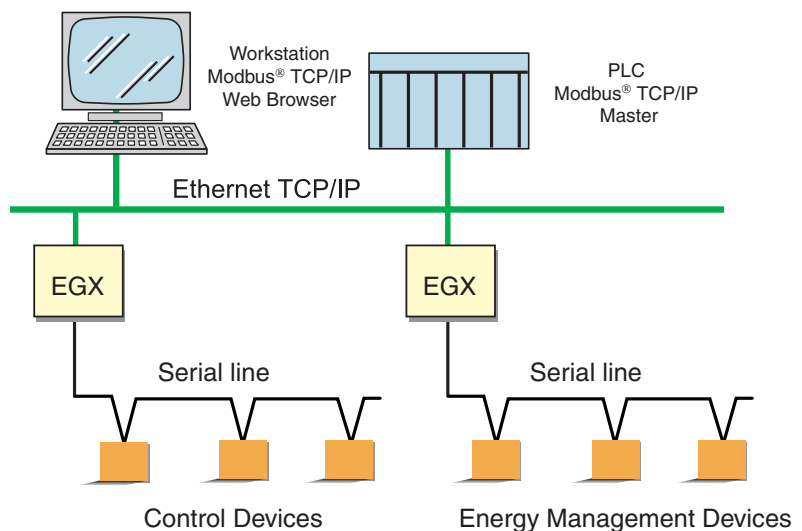
Features and Benefits

Easy to install—Power over Ethernet (PoE IEEE 802.3af) eliminates the need for CPTs, disconnects, and AC-DC power supplies, while greatly reducing installation time. Simply install the EGX in your equipment and wire the serial daisy chain. Connect the CAT5 Ethernet cable to an “endspan” (PoE enabled switch) or “midspan” (PoE injector) to power the gateway.

Easy to setup—Configure the gateway using standard Microsoft tools (Internet Explorer or Hyperterminal); no special software required.



The EGX100 provides reliable Ethernet Communications for high-speed access to critical information.



... continued on page 2

Easy to troubleshoot—The gateway provides detailed diagnostics for Ethernet and serial communication ports through a web interface.

Easy to maintain—Field upgradable firmware lets you add new features while reducing costly downtime.

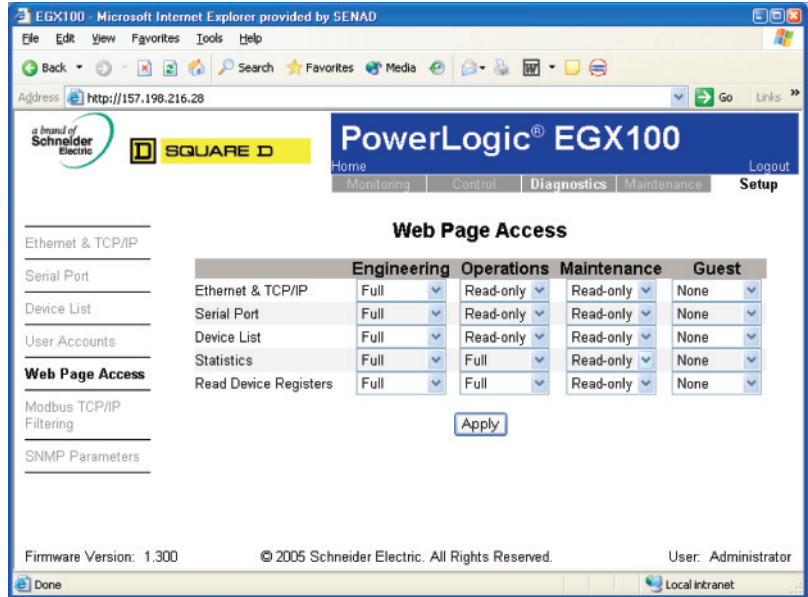
Secure—Windows-style user and group security provides customizable, password-protected access to configuration. Modbus TCP/IP filtering lets you specify whether each master device shall have "read-only" or "full access" to connected serial slave devices.

Cost-effective, high-speed communications—Use existing LAN infrastructure to reduce communications wiring and network management costs. Fast Ethernet communications provides high-speed access to critical information.

Open platform provides broad connectivity—Modbus TCP/IP over Ethernet allows transparent access via intranet/internet. Each gateway supports up to 32 Modbus or PowerLogic protocol devices.

Subnet initiated communications—The gateway supports a slave mode for connecting a serial-line based system to Ethernet. For example, a building management system with a Modbus serial interface can access devices across Ethernet via a gateway in slave mode. A gateway in slave mode can route to sixteen remote Modbus TCP/IP interfaces supporting up to 128 serial-line devices.

Extended temperature range—An operating temperature range of -25 to 70°C enables operation in harsh environments.



Web pages viewed in Internet Explorer provide secure access to EGX100 setup functions. Windows-style user and group accounts let the Administrator assign access to setup pages by user group.

Technical Specifications

Physical Characteristics	
Dimensions	90.7mm x 72mm x 65.8mm
Mounting	Din rail
Communications	
Ethernet	10/100BaseT _x RJ45 Connector
Serial	RS485 4 wire, RS485 2 wire, RS232
Protocols	Modbus TCP/IP, RTU & ASCII, SY/MAX, Jbus
Control Power	
Input Voltage	24Vdc, 4w or PoE (IEEE 802.3af), class 3
Environmental	
Operating Temp.	-25 to 70°C
Enclosure IP Rating	IP30
Regulatory/Standards Compliance	
Agency	UL, cUL, CE

Ordering Information

Gateway:	EGX100SD
PoE Injector:	TCSEAV0100
Includes:	<ul style="list-style-type: none"> PoE midspan injector Universal power cord, 2 meters Plug adapters for Australia, Europe, UK, USA CAT 5 Ethernet patch cable, 2 meters Instruction sheet
Configuration Kit:	TCSEAK0100
Includes:	<ul style="list-style-type: none"> RJ45 to DB9F adapter CAT5 Crossover cable, 3 meters Instruction sheet