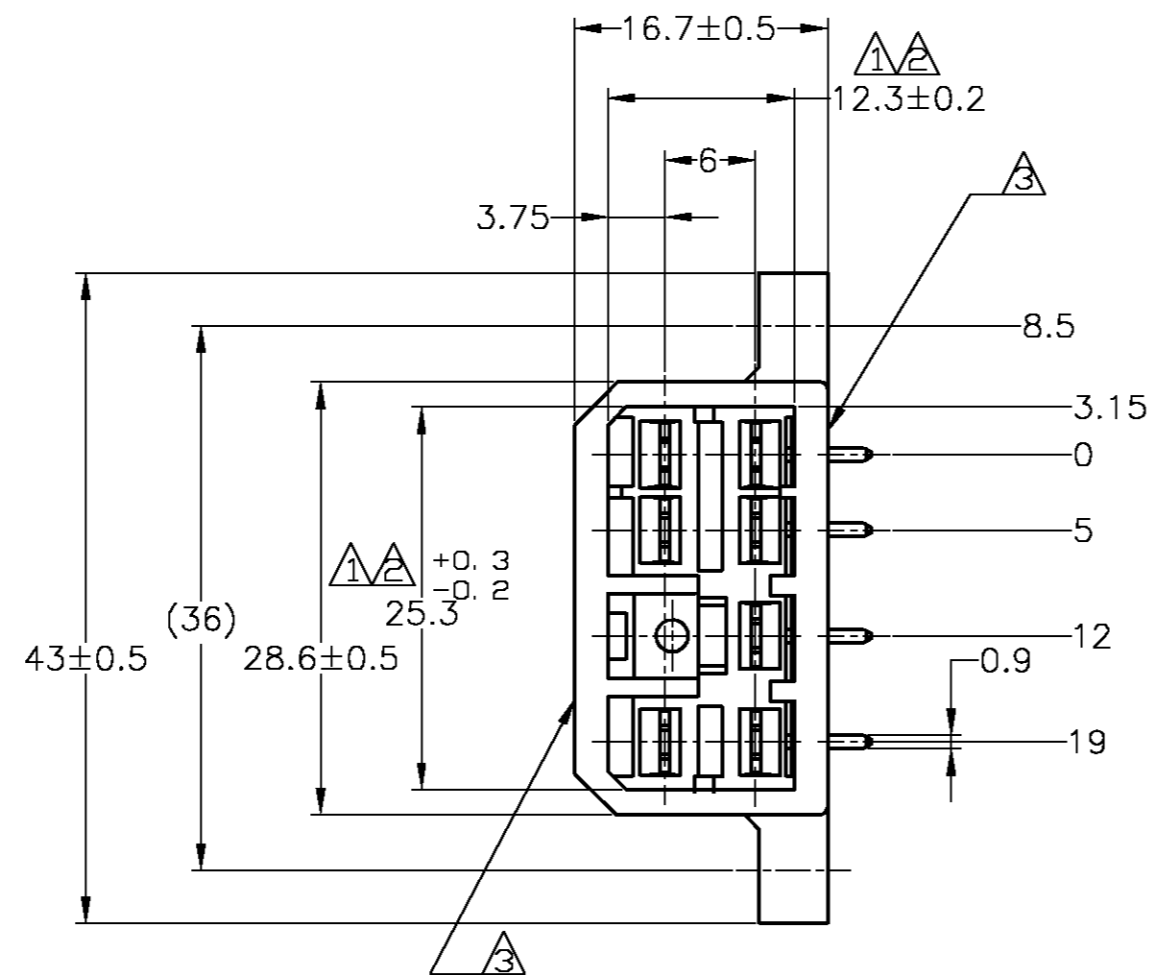
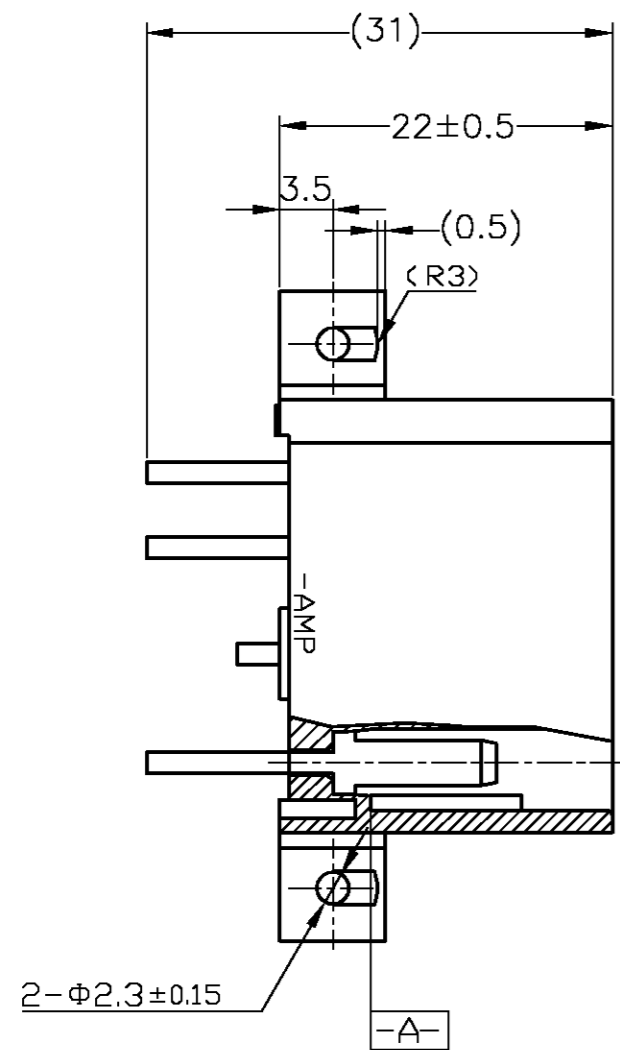


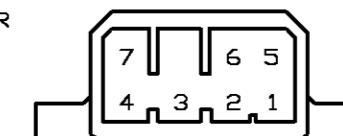
THIS DRAWING IS UNPUBLISHED. RELEASED FOR PUBLICATION  
 © COPYRIGHT BY TYCO ELECTRONICS CORPORATION. ALL RIGHTS RESERVED.

LOC	DIST	REVISIONS					
J	-	P	LTR	DESCRIPTION	DATE	DWN	APVD
		E5		REDRAWN W/CHANGE	ECR-07-017829	31AUG07	TS KB



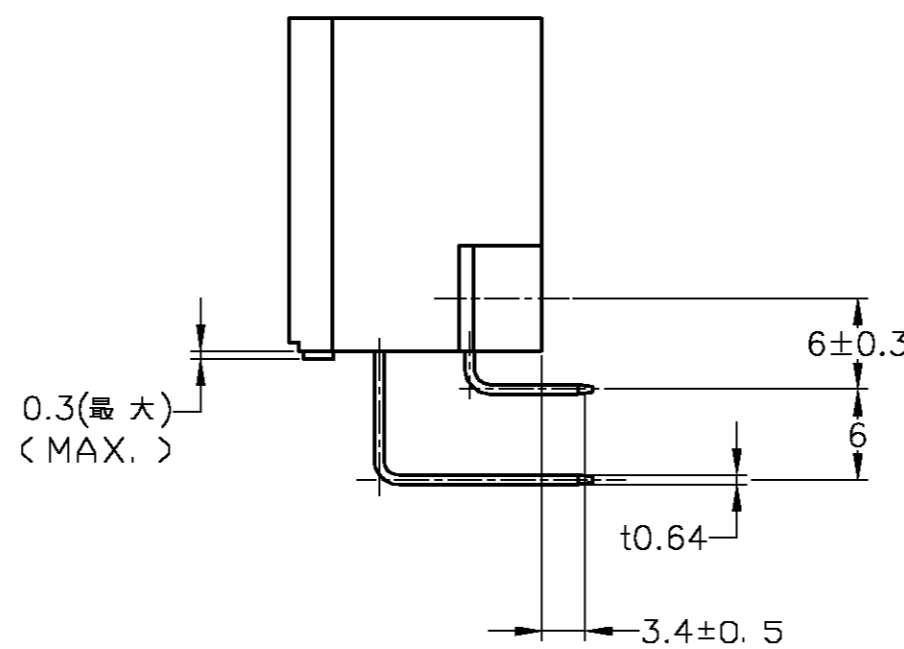
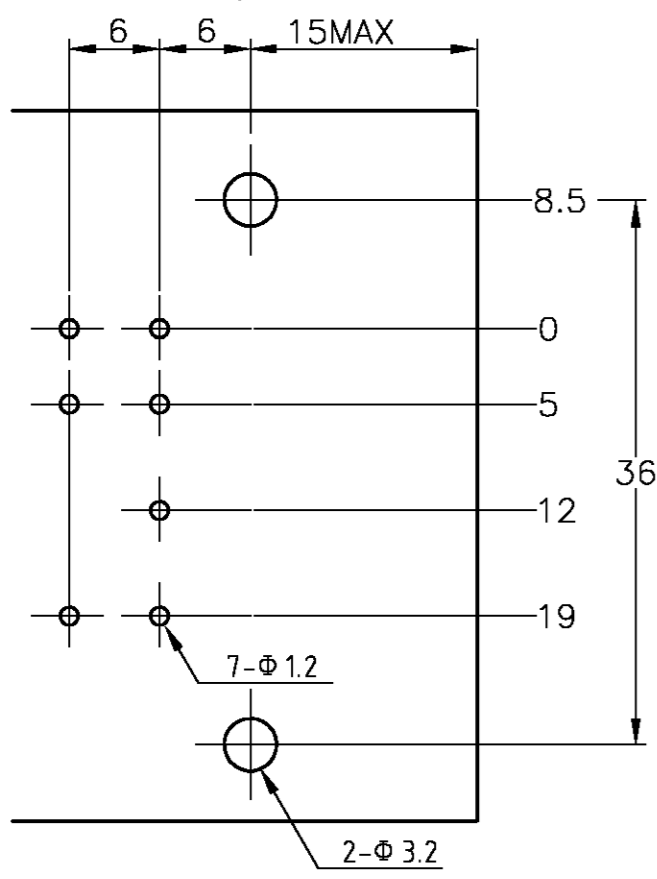
- 注記:
- △ **A-A** 面より2mmの範囲で測定のこと。
  - △ 相手ハウジングと所定の機能を満たしてかん合できること。
  - △ フードの反りは0.2以内。
  - 4 推奨取付けねじ; JIS B 1115 又は、1122 タッピンねじ  
なべ1種又は2種、呼び径3長さ6mm以下。  
(締め付けトルク: 39.2N 以下)
  - 5 適用製品規格 No.108-5093
  - 6 相手ハウジングとのかん合力は、29.4N以下  
但し、リセプタクルコンタクトは含まない。
  - △ タブなしタイプ(表参照)回路番号下図参照のこと。

- NOTES:
- △ TO BE MEASURED WITHIN 2mm FROM **A-A**
  - △ IN COUPLING WITH THE PLUG HOUSING MATING SATISFIES FUNCTION
  - △ WARPAGE 0.2 MAX.
  - 4 RECOMMENDED MOUNTING SCREW; 3mmDIA, 6mmLENGTH(MAX.)  
PAN HEAD, CLASS 1 AND 2 TAPPING SCREW SPECIFIED IN JIS B1115, B1122 (TIGHTENING TORQUE; 39.2N MAX.)
  - 5 SPEC. No. 108-5093
  - 6 IN COUPLING WITH THE PLUG HOUSING MATING FORCE  
29.4N MAX WITHOUT RECEPTACLE CONTACT
  - △ NON TAB CONTACT'S TYPE (SEE TABLE)



プリント基板取付穴寸法図  
(MOUNTING DIMENSIONS FOR P.C. BOARD)

1. 板厚, 1.6±0.15  
(P.C.B. THICKNESS, 1.6±0.15)
2. 公差, ±0.1  
(TOLERANCE, ±0.1)



STATUS	CONTACT FINISH	CONTACT FINISH	CONTACT FINISH	COLOR	PART NUMBER
	SELECTIVE-TIN (MATTE)	SELECTIVE GOLD (0.38μm MIN.)	NATURAL	2-5172039-1	
	SELECTIVE-TIN (MATTE)	SELECTIVE GOLD (0.76μm MIN.)	NATURAL	1-5172039-1	
OBSOLETE	PRE-TIN	PRE-TIN	NATURAL	4-172039-1	
OBSOLETE	PRE-TIN	PRE-TIN	NATURAL	3-172039-1	
OBSOLETE	TIN-LEAD	SELECTIVE GOLD (0.38μm MIN.)	GREEN	2-172039-4	
OBSOLETE	TIN-LEAD	SELECTIVE GOLD (0.38μm MIN.)	NATURAL	2-172039-1	
OBSOLETE	TIN-LEAD	SELECTIVE GOLD (0.76μm MIN.)	GREEN	1-172039-4	
OBSOLETE	TIN-LEAD	SELECTIVE GOLD (0.76μm MIN.)	NATURAL	1-172039-1	
OBSOLETE	PRE-TIN	PRE-TIN	YELLOW	172039-7	
OBSOLETE	PRE-TIN	PRE-TIN	GRAY	172039-6	
OBSOLETE	PRE-TIN	PRE-TIN	BLUE	172039-5	
OBSOLETE	PRE-TIN	PRE-TIN	GREEN	172039-4	
OBSOLETE	PRE-TIN	PRE-TIN	BROWN	172039-3	
OBSOLETE	PRE-TIN	PRE-TIN	BLACK	172039-2	
OBSOLETE	PRE-TIN	PRE-TIN	NATURAL	172039-1	
△ NON TAB PLACES タブなし箇所		SOLDERING SIDE 半田付け部	CONTACT SIDE 接触部側	COLOR 色	PART NUMBER 製品型番
		CONTACT FINISH コンタクト仕上			

TOLERANCE UNLESS OTHERWISE SPECIFIED:  
一般公差

0 < x ≤ 10	±0.2
10 < x ≤ 30	±0.25
30 < x ≤ 100	±0.3
ANGLE	±3°

THIS DRAWING IS A CONTROLLED DOCUMENT.

DWN	T.SHINOHARA	31AUG07
CHK	K.BETSUI	31AUG07
APVD	K.BETSUI	31AUG07

PRODUCT SPEC: 製品仕様  
APPLICATION SPEC: 取付適用規格

NAME: 7P HORIZONTAL TYPE CAP HOUSING ASS'Y  
MULTI-INTERLOCK CONN. (WIRE TO P.C.B.)

SIZE: A2 CAGE CODE: 00779 DRAWING NO: 172039

WEIGHT: -

CUSTOMER DRAWING

SCALE: 2:1 SHEET: 1 of 1 REV: E5