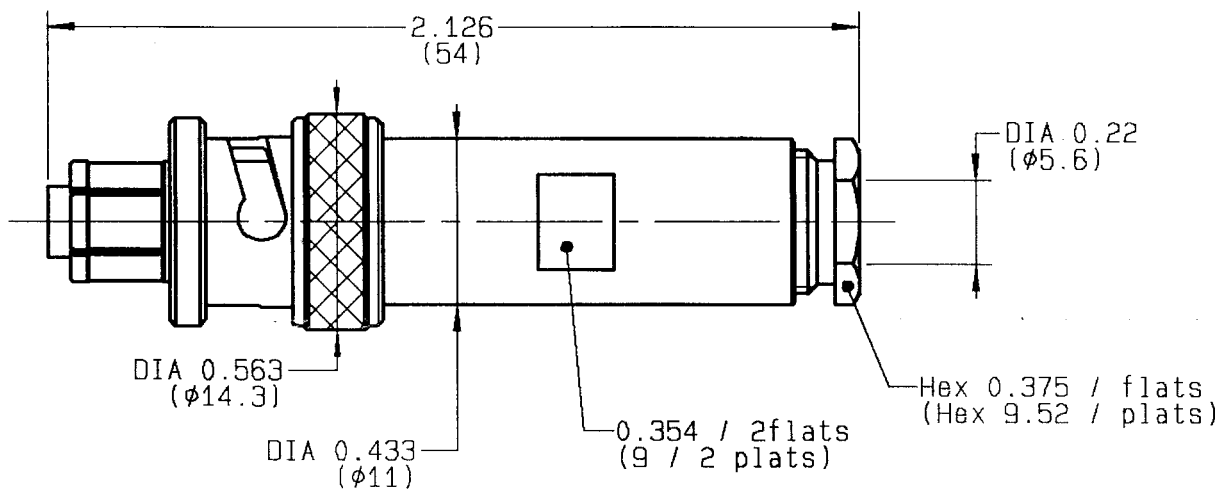


FEMALE STRAIGHT PLUG
CABLE 5/50



CABLES : -

CHARACTERISTICS

NOMINAL IMPEDANCE	50	Ω
FREQUENCY RANGE	0-2	GHz
TEMPERATURE RATING	-65/+165	°C
VSWR	1.2 + .3 x F(GHz)Max1	
RF INSERTION LOSS	AD √F(GHz) dB Maxi	
VOLTAGE RATING	10000	Vrms Max
DIELECTRIC WITHSTANDING VOLTAGE	12000	Vrms min
INSULATION RESISTANCE	5000	MΩ min
HERMETIC SEAL	-	cc/s
	NA	Atm.cm3/s
LEAKAGE (pressurized only)	-	psi
	NA	MPa
WEIGHT	0.8929	Oz
	25	g

STANDARDISATION	-
CABLE RETENTION	39.65 / 180 lb min N
CENTER CONTACT RETENTION	
Axial force - mating end	5.95 / 27 lb min N
Axial force - opposite end	5.95 / 27 lb min N
Torque (Min)	0 / NA Inch.oz cm.N
RECOMMENDED TORQUES	
Mating	0 / NA Inch.lb cm.N
Panel nut	0 / NA Inch.lb cm.N
Clamp nut	13.25 / 150 Inch.lb cm.N

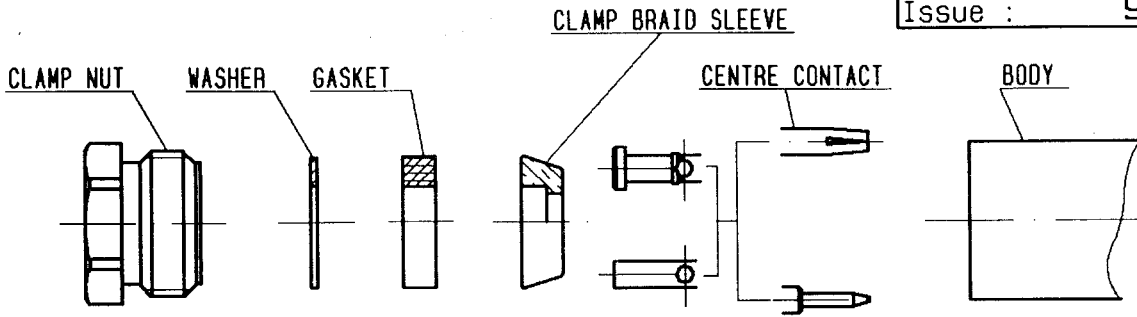
CONSTRUCTION

CONNECTOR PARTS	MATERIALS	FINISH
BODY	BRASS	NICKEL
OUTER CONTACT	BERYLLIUM COPPER	NICKEL
CENTER CONTACT	BERYLLIUM COPPER	GOLD
INSULATOR	PTFE	-
-	-	-
-	-	-
-	-	-
-	-	-
-	-	-

ISSUE	REVISION No	DESCRIPTION	BY	DATE

Initiated on 04/05/93
Superseded on - - - -
The information given here is subject to change without notice. Design changes may be in order to improve the product.





①

Strip the cable .

-
-
-



Stripping	a	b	c	d	e
inch	0.138	0.984	0	0	0.807
mm	3.5	25	-	-	20.5

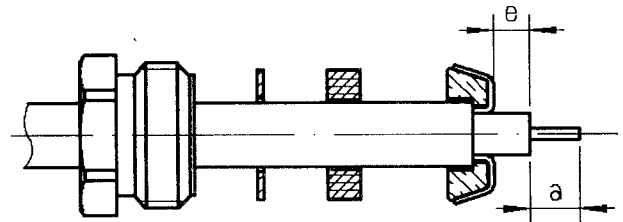
②

Slide the clamp nut , the washer and the gasket onto the cable .

Slide clamp braid sleeve over braid .
Fold back braid and trim off surplus braid .

Trim back dielectric as shown .

-
-
-



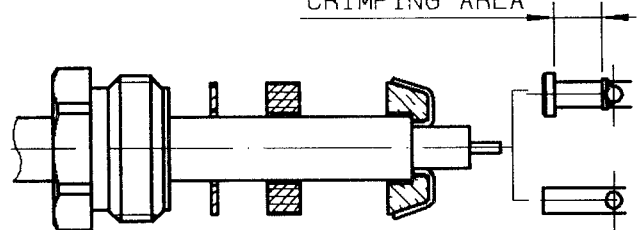
③

Slide on the centre contact until it bottoms against cable dielectric .

Crimp centre contact , crimping tool R282 223 000 (hex:0.068) or crimping tool R282 293 000 (M22520/5-01) + dies R282 235 011 (M22520/5-11).

-
-
-

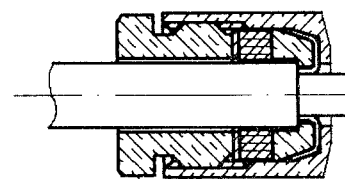
CRIMPING AREA



④

Screw sub-assembly into the connector body .
(recommended coupling torque 13.29 in.lb)

-
-



Hex. : 0.374/flats