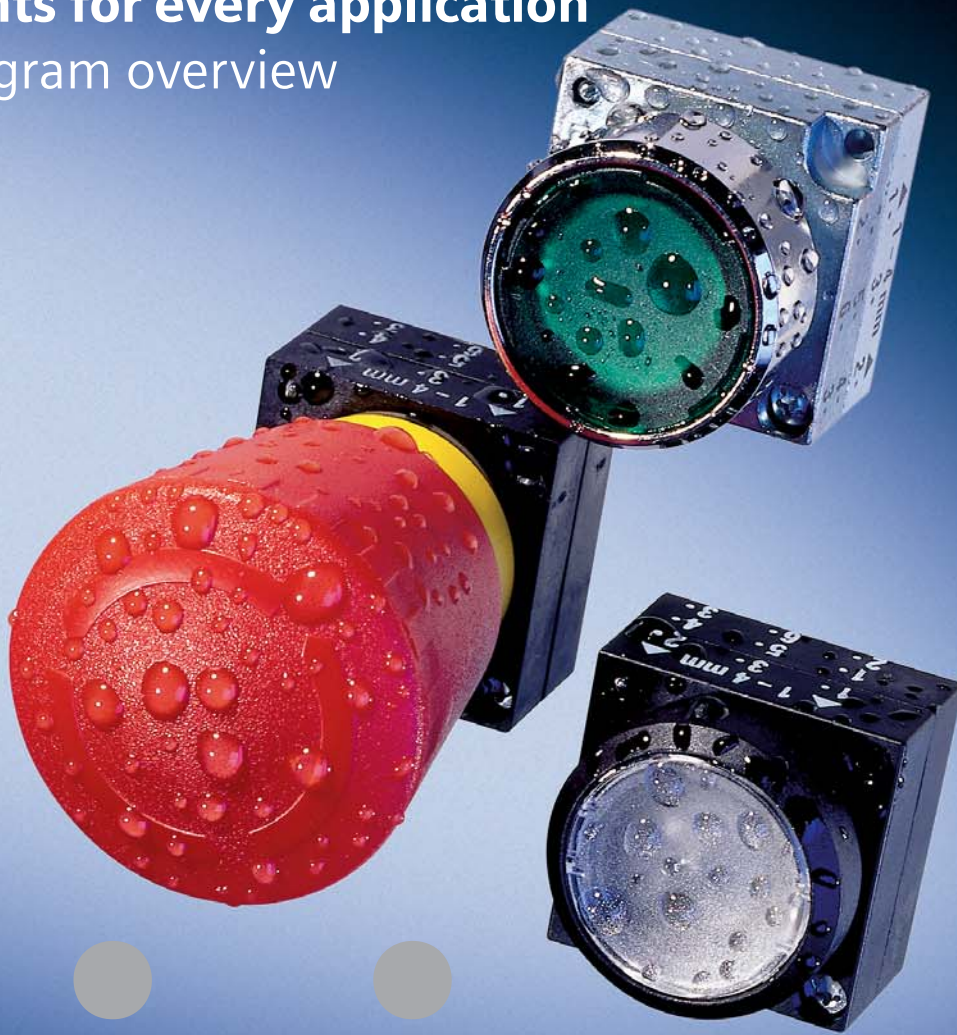


Pushbuttons and indicator lights for every application

Program overview



sirius

COMMANDING & SIGNALING



SIEMENS

Always know what is happening: **SIRIUS commanding and signaling devices**

Special attention has to be paid to the interaction between man and machine. Fault sources and system disturbances must be signaled reliably – and as early as possible. And if things do get critical – the top priority is to safely and quickly stop machines and bring systems offline. Our extensive range of SIRIUS commanding and signaling devices are designed to meet the challenge. From pushbutton units, indicator lights, EMERGENCY SWITCHING-OFF/EMERGENCY STOP pushbuttons, two-hand operating consoles, foot switches, integrated signal lamps, and cable-operated switches – with SIRIUS commanding and signaling devices you can be confident in being able to handle every situation.



Innovative technology, revolutionary mounting and installation

Our complete range of pushbutton units and indicator lights is part of our extensive portfolio of SIRIUS commanding and signaling devices. This complete range is modular, well-proven in practice and is 100% fit for industrial environments. Whether in plastic or rugged metal versions with a high IP67 degree of protection – we have the right solution for every application. SIRIUS pushbutton units and indicator lights are not only innovative when it comes to technology and design – they are revolutionary as they are so simple to mount: Actuators and indicators, holders and contact blocks or lampholders can be easily and safely assembled by one person with just a few hand movements. Simple and fast. The 3SB3 two-hand operating console and the 3SE2 foot switch round off our range of pushbutton units and indicator lights.



Pushbutton units and indicator lights: Modular, proven in the field and fit for industry

Our range of pushbutton units and indicator lights distinguishes itself with its high degree of functionality – and by an absolutely modern, flat design. And, just as innovative: The inherent ease of mounting. This is because actuators, indicators, holders as well as contact blocks and lampholders can be reliably and firmly attached with just a few movements of the hand by just one person. In addition, the modular design provides a higher degree of flexibility: Multiple contact block types can be combined with both plastic or metal actuators. The same is true for the light elements and indicators.



EMERGENCY STOP/SWITCH-OFF mushroom pushbuttons: Reliably and quickly mounted

Our 3SB3 commanding devices are the optimum choice wherever man and machine interact. Here, our EMERGENCY STOP/SWITCH-OFF mushroom pushbutton is worthy of special mention. Thanks to its ergonomic design, it can be actuated with any surface of the hand – quickly engaging – therefore ensuring that plants and systems are quickly and reliably stopped when hazardous situations occur. The metal version is suitable for use in the toughest of conditions.



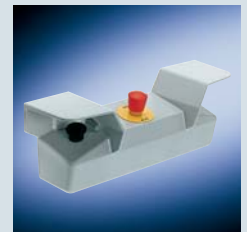
Enclosed operators: Designed for any application

Enclosed pushbutton units and indicator lights are used as manual commanding devices for control systems that may be separate from the machine, but can be used independently for custom applications. The housings are equipped with the 22 mm operator, contact blocks, and light elements and can be mounted by inserting the actuator element from the front through the hole in the upper section of the housing. The operators are secured using the included holder. The contact blocks and lampholders with base mounting are snapped into the lower section of the housing. If desired all enclosures can be equipped with actuator elements and contact blocks and connected to AS-Interface.

Convincing advantages

- Fast and reliable mounting by just one person
- Base or front panel mounting (also with incandescent lamp, LED or integrated LED)
- Only one standard tool is required to mount
- Rugged metal version with a high IP67 degree of protection
- Versions with screw, spring-loaded terminal or solder pin connection systems
- Automatic inscription using the SIRIUS Label Designer
- Integrated in AS-Interface; directly connected to ASIsafe
- Direct attachment to ASi yellow shaped cable
- Online configurator to select completely mounted customized housings
(<http://www.siemens.com/sirius-commanding>)

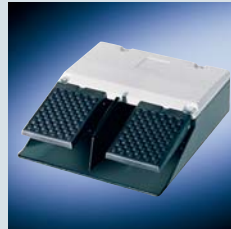
Commanding and signaling: Our portfolio at a glance



3SB command and signaling devices

3SB3 pushbutton and 3SB3 indicator lights

Description	Indicator lights, pushbuttons, key-operated switches, illuminated pushbuttons, EMERGENCY STOP mushroom head pushbutton contact blocks and lamp sockets, switches with rotary knobs	Encapsulated pushbuttons, indicator lights, EMERGENCY STOP enclosures – customized enclosures are also available on request	Two-hand operation console including EMERGENCY STOP and 2 mushroom head pushbuttons, additional command devices can be installed
Version	Molded plastic or metal, round, 22 mm diameter and square	Molded plastic and metal	Molded plastic and metal
Mounting/connection	Can be installed by one person without any special tools, the actuators can be equipped in a modular fashion with contact block and lamp sockets. Screw connections, Cage-Clamp terminals, solder pins	Base or front-panel mounting	Can be mounted to a panel, wall, stand or directly in the plant, screw connection
Degree of protection	IP66/IP67 (molded plastic) and IP67 and NEMA4 (metal)	IP65/IP67 (metal)	IP65
Certification	UL, CSA, CE, BG (3SB3 EMERGENCY STOP)		
Relevant Standards	IEC/EN 60947-5-1, IEC/EN 60947-5-6, EN 418		EN 574, DIN 24980
AS-Interface	Pushbuttons and indicator lights can be quickly and simply connected to the AS-Interface communications system using different solutions. EMERGENCY STOP devices can be directly connected using the standard AS-Interface with safety-related communications	Enclosure with integrated AS-Interface. Standard command devices and EMERGENCY STOP can be connected in one enclosure. Modular design	Metal consoles can be retrofitted with the safety-related AS-Interface
Safety	Operating personnel actuate the EMERGENCY STOP mushroom head pushbutton to shutdown plants and systems when hazardous situations arise	EMERGENCY STOP function with latching according to EN 418	EMERGENCY STOP function with latching according to EN 418



3SE command devices

8WD signaling devices

3SE7 cable-operated switches

3SE29 foot-operated switches

8WD4 signaling columns

8WD5 integrated lamps

System consisting of switch and cable. With and without latching. LED position display with extremely high illumination

Foot-operated command devices with either 1 or 2 pedals, with and without protective cover, either momentary or latching contacts

Steady light, flashing light, rotating light, flash-type light, buzzing and siren elements

Steady light, with incandescent lamp or LED; flash-type light and rotating light

Molded plastic and metal

Molded plastic and metal

50/70 mm diameter

Thermo-plastic enclosure, 70 mm diameter

Screw connection

Screw connection

Simple to mount and install and change lamps without tools. Base/ floor, pipe, angled bracket, single-hole mounting. Connected-up using Cage-Clamp terminals or screw terminals

Retained using a PG-29 threaded socket with nut. Screw connection

IP65

IP65

IP65 (70 mm diameter)

IP65

UL, CSA, CE

UL, CSA, CE

Up to Cat. 4 acc. to EN 954-1 EMERGENCY STOP acc. to EN 418, EN 60929, DIN VDE 0470-1

Positively-opening contacts in compliance with IEC 947-5-1

IEC 60947-5-1

Version with ASIsafe adapter

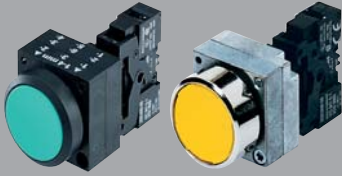
With conventional wiring, via the K45F safety module, K60F can be connected to ASIsafe

The 8WD4 signaling columns can be directly connected to the AS-Interface bus system through an integrated adapter element.

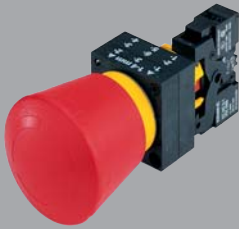
EMERGENCY STOP function with latching acc. to EN 418

Safety foot-operated switch with latching acc. to EN 418

Complete units – pushbuttons and indicator lights



Pushbutton		Illuminated pushbutton	
with flat button, equipped with:	equipped with	with flat button, equipped with	equipped with
● 1NC 3SB3 □ 03-0AA11	● 1NO + 1NC 3SB3 □ 01-0AA11	● 1NC + BA 9s 3SB3 □ 07-0AA21	● 1 NO + 1 NC + BA 9s 3SB3 □ 05-0AA21
● 1NO 3SB3 □ 02-0AA11	● 1NO + 1NC 3SB3 □ 01-0AA21	● 1NO + BA 9s 3SB3 □ 06-0AA31	● 1 NO + 1 NC + BA 9s 3SB3 □ 05-0AA31
● 1NC 3SB3 □ 03-0AA21	● 1NO + 1NC 3SB3 □ 01-0AA31	● 1NO + BA 9s 3SB3 □ 06-0AA41	● 1 NO + 1 NC + BA 9s 3SB3 □ 05-0AA41
● 1NO 3SB3 □ 02-0AA31	● 1NO + 1NC 3SB3 □ 01-0AA41	● 1NO + BA 9s 3SB3 □ 06-0AA51	● 1 NO + 1 NC + BA 9s 3SB3 □ 05-0AA51
● 1NO 3SB3 □ 02-0AA41	● 1NO + 1NC 3SB3 □ 01-0AA51	○ 1NO + BA 9s 3SB3 □ 06-0AA61	○ 1 NO + 1 NC + BA 9s 3SB3 □ 05-0AA61
● 1NO 3SB3 □ 02-0AA51	○ 1NO + 1NC 3SB3 □ 01-0AA61	○ 1NO + BA 9s 3SB3 □ 06-0AA71	○ 1 NO + 1 NC + BA 9s 3SB3 □ 05-0AA71
○ 1NO 3SB3 □ 02-0AA61			

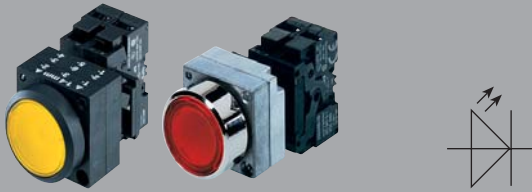


EMERGENCY SWITCHING-OFF/EMERGENCY STOP mushroom-shaped pushbutton	Mushroom-shaped push-pull switch	Knob	
with positive latching function according to EN 418 (ISO 13850), 40 mm diameter, maintained-contact type, for EMERGENCY SWITCHING-OFF/EMERGENCY STOP with yellow backing plate, 80 mm diameter, turn to release	diameter 40 mm, maintained-contact type, equipped with	2 switch positions, maintained-contact type, equipped with	3 switch positions, maintained-contact type, equipped with
● 1NC 3SB3 □ 03-1HR20	● 1NC 3SB3 □ 03-1CA21 ¹⁾	● 1NO 3SB3 □ 02-2KA11 ¹⁾	● 1NO, 1NO 3SB3 □ 10-2DA11 ¹⁾
● 1NO + 1NC 3SB3 □ 01-1HR20	● 1NO + 1NC 3SB3 □ 01-1CA21 ¹⁾	● 1NO + 1NC 3SB3 □ 01-2KA11 ¹⁾	● 1NO + 1NC, 1NO + 1NC 3SB3 □ 08-2DA11 ¹⁾
with pull-release		Heavy-duty knob	Heavy-duty knob
● 1NC 3SB36 03-1TR20		● 1NO 3SB36 02-2PA11	● 1NO, 1NO 3SB36 10-2SA11
● 1NO + 1NC 3SB36 01-1TR20		● 1NO + 1NC 3SB36 01-2PA11	● 1NO + 1NC, 1NO + 1NC 3SB36 08-2SA11
			momentary-contact type
			● 1NO, 1NO 3SB3 □ 10-2EA11 ¹⁾
			● 1NO + 1NC, 1NO + 1NC 3SB3 □ 08-2EA11 ¹⁾
			Heavy-duty knob
			● 1NO, 1NO 3SB36 10-2TA11
			● 1NO + 1NC, 1NO + 1NC 3SB36 08-2TA11

¹⁾ This version is not available as square 3SB33

²⁾ These versions are also available in round and square plastic design also with a smooth lens. The Order No. should be changed to 3SB3. ...6BA..., e.g. 3SB3204-6BA20 for a round plastic indicator light with BA 9s lamp holder with smooth red lens.

Round, molded-plastic 3SB3 **2** ..-.....
 Round, metal 3SB3 **6** ..-.....
 Square, molded-plastic 3SB3 **3** ..-.....



Illuminated pushbutton with integrated, super-bright LED

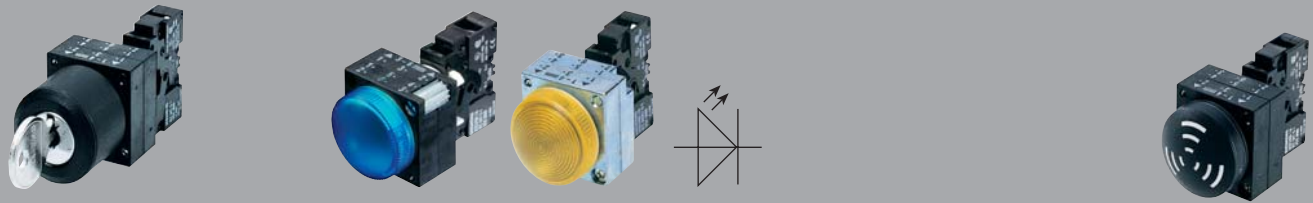
with flat button,
operating voltage 24 V AC,
with integrated LED,
equipped with

equipped with

with flat button,
operating voltage 230 V AC,
with integrated LED,
equipped with

equipped with

● 1 NC + LED 3SB3 □46-0AA21	● 1 NO, 1 NC + LED 3SB3 □47-0AA21	● 1 NC + LED 3SB3 □54-0AA21	● 1 NO + 1 NC + LED 3SB3 □55-0AA21
● 1 NO + LED 3SB3 □45-0AA31	● 1 NO, 1 NC + LED 3SB3 □47-0AA31	● 1 NO + LED 3SB3 □53-0AA31	● 1 NO + 1 NC + LED 3SB3 □55-0AA31
● 1 NO + LED 3SB3 □45-0AA41	● 1 NO, 1 NC + LED 3SB3 □47-0AA41	● 1 NO + LED 3SB3 □53-0AA41	● 1 NO + 1 NC + LED 3SB3 □55-0AA41
● 1 NO + LED 3SB3 □45-0AA51	● 1 NO, 1 NC + LED 3SB3 □47-0AA51	● 1 NO + LED 3SB3 □53-0AA51	● 1 NO + 1 NC + LED 3SB3 □55-0AA51
○ 1 NO + LED 3SB3 □45-0AA61	○ 1 NO, 1 NC + LED 3SB3 □47-0AA61	○ 1 NO + LED 3SB3 □53-0AA61	○ 1 NO + 1 NC + LED 3SB3 □55-0AA61
○ 1 NO + LED 3SB3 □45-0AA71	○ 1 NO, 1 NC + LED 3SB3 □47-0AA71	○ 1 NO + LED 3SB3 □53-0AA71	○ 1 NO + 1 NC + LED 3SB3 □55-0AA71



RONIS safety lock

Indicator light

Acoustic annunciator, IP65

flat, 2 switching positions,
maintained-contact type, with
key which can be withdrawn in
any position, Lock No. SB30,
equipped with

equipped with **BA 9s:**

operating voltage
24 V AC,
with integrated LED,
equipped with **LED:**

operating voltage
230 V AC,
with integrated LED,
equipped with **LED:**

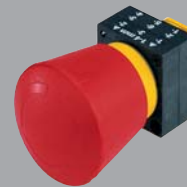
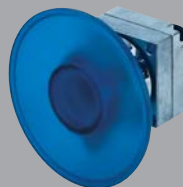
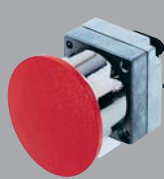
continuous tone (2.4 kHz),
operating current min. 10 mA,
min. sound pressure level
80 dB/10 cm, operating voltage

● 1 NO 3SB3 □02-4AD11 ¹⁾	● 3SB3 □04-6BA20 ¹⁾²⁾	● 3SB3 □44-6BA20 ¹⁾²⁾	● 3SB3 □52-6BA20 ¹⁾²⁾	● 24 V AC/DC 3SB32 33-7BA10
● 1 NO + 1 NC 3SB3 □01-4AD11 ¹⁾	● 3SB3 □04-6BA30 ¹⁾²⁾	● 3SB3 □44-6BA30 ¹⁾²⁾	● 3SB3 □52-6BA30 ¹⁾²⁾	● 115 V AC/DC 3SB32 34-7BA10
	● 3SB3 □04-6BA40 ¹⁾²⁾	● 3SB3 □44-6BA40 ¹⁾²⁾	● 3SB3 □52-6BA40 ¹⁾²⁾	● 230 V AC/DC 3SB32 35-7BA10
	● 3SB3 □04-6BA50 ¹⁾²⁾	● 3SB3 □44-6BA50 ¹⁾²⁾	● 3SB3 □52-6BA50 ¹⁾²⁾	
	○ 3SB3 □04-6BA60 ¹⁾²⁾	○ 3SB3 □44-6BA60 ¹⁾²⁾	○ 3SB3 □52-6BA60 ¹⁾²⁾	
	○ clear 3SB3 □04-6BA70 ¹⁾²⁾	○ clear 3SB3 □44-6BA70 ¹⁾²⁾	○ clear 3SB3 □52-6BA70 ¹⁾²⁾	

Actuating elements with holder



Pushbutton	Pushbutton	Pushbutton	Pushbutton	Pushbutton
with flat button	with raised button	with raised button, maintained-contact type	with raised front ring	with raised front ring, with castellations
● 3SB3 □□ 0-0AA11	● 3SB3 □□ 0-0BA11 ¹⁾	● 3SB3000-0CA11	● 3SB3 □□ 0-0AA12	● 3SB3 □□ 0-0AA13 ²⁾
● 3SB3 □□ 0-0AA21	● 3SB3 □□ 0-0BA21 ¹⁾	● 3SB3000-0CA21	● 3SB3 □□ 0-0AA22	● 3SB3 □□ 0-0AA23
● 3SB3 □□ 0-0AA31	● 3SB3 □□ 0-0BA31 ¹⁾		● 3SB3 □□ 0-0AA32 ¹⁾	● 3SB3 □□ 0-0AA33 ²⁾
● 3SB3 □□ 0-0AA41	● 3SB3 □□ 0-0BA51 ¹⁾		● 3SB3 □□ 0-0AA42	● 3SB3 □□ 0-0AA43 ²⁾
● 3SB3 □□ 0-0AA51	○ 3SB3 □□ 0-0BA61 ¹⁾		● 3SB3 □□ 0-0AA52 ¹⁾	
○ 3SB3 □□ 0-0AA61			○ 3SB3 □□ 0-0AA62	
○ 3SB3 □□ 0-0AB51 ¹⁾				
⊙ 3SB3 □□ 0-0AA71				
● 3SB3 □□ 0-0AA81 ¹⁾				
● 3SB3 □□ 0-0AB01 ¹⁾				
Ⓛ 3SB3 □□ 0-0AB11 ¹⁾				
Ⓜ 3SB3 □□ 0-0AB21 ¹⁾				



Illuminated mushroom-shaped pushbutton	Push-pull switch	Push-pull switch	EMERGENCY SWITCHING-OFF/EMERGENCY STOP mushroom-shaped pushbutton	EMERGENCY SWITCHING-OFF/EMERGENCY STOP mushroom-shaped pushbutton
(incl. holder to snap-on elements)	maintained-contact type	illuminated (incl. holder to snap-on elements)	with positive latching function according to EN 418 (ISO 13850), maintained-contact type, turn to release	with positive latching function according to EN 418 (ISO 13850), maintained-contact type, pull to release
diameter 30 mm	diameter 30 mm	diameter 30 mm	diameter 32 mm	diameter 40 mm
● 3SB3 □□ 1-1DA31 ¹⁾	● 3SB3 □□ 0-1EA11 ¹⁾	● 3SB3 □□ 1-1EA21 ¹⁾	● 3SB3 □□ 0-1FA20 ¹⁾	● 3SB3 □□ 0-1TA20 ¹⁾
● 3SB3 □□ 1-1DA41 ¹⁾	● 3SB3 □□ 0-1EA21 ¹⁾	● 3SB3 □□ 1-1EA31 ¹⁾	diameter 40 mm	
○ 3SB3 □□ 1-1DA61 ¹⁾	diameter 40 mm	● 3SB3 □□ 1-1EA41 ¹⁾	● 3SB3 □□ 0-1HA20	
diameter 40 mm	● 3SB3 □□ 0-1CA11 ¹⁾	● 3SB3 □□ 1-1EA51 ¹⁾	diameter 60 mm	
● 3SB3 □□ 1-1GA31 ¹⁾	● 3SB3 □□ 0-1CA21 ¹⁾	⊙ 3SB3 □□ 1-1EA71 ¹⁾	● 3SB3 □□ 0-1AA20 ¹⁾	
● 3SB3 □□ 1-1GA41 ¹⁾	diameter 60 mm	diameter 40 mm		
○ 3SB3 □□ 1-1GA61 ¹⁾	● 3SB35 00-1RA11	● 3SB3 □□ 1-1CA21 ¹⁾		
diameter 60 mm	● 3SB35 00-1RA21	● 3SB3 □□ 1-1CA31 ¹⁾		
● 3SB35 01-1QA31		● 3SB3 □□ 1-1CA41 ¹⁾		
● 3SB35 01-1QA41		● 3SB3 □□ 1-1CA51 ¹⁾		
○ 3SB35 01-1QA61		⊙ 3SB3 □□ 1-1CA71 ¹⁾		
		diameter 60 mm		
		● 3SB35 01-1RA21		
		● 3SB35 01-1RA31		
		● 3SB35 01-1RA41		
		● 3SB35 01-1RA51		
		⊙ 3SB35 01-1RA71		

¹⁾ This version is not available as square 3SB33

²⁾ This version is not available as round, metal 3SB35

Round, molded-plastic 3SB3 00...-.....
 Round, metal 3SB3 50...-.....
 Square, molded-plastic 3SB3 11...-.....



illuminated pushbutton	illuminated pushbutton	Pushbutton	illuminated pushbutton	Mushroom-shaped pushbutton
with flat button (including holder to snap-on elements)	with raised button (including holder to snap-on elements)	maintained-contact type with flat button, released by pressing again	maintained-contact type with flat button, including holder for 3 elements, released by pressing again	diameter 30 mm
● 3SB3 □□ 1-0AA21	● 3SB3 □□ 1-0BA21 ¹⁾	● 3SB3 □□ 0-0DA11	● 3SB3 □□ 1-0DA21	● 3SB3 □□ 0-1DA11 ¹⁾
● 3SB3 □□ 1-0AA31	● 3SB3 □□ 1-0BA31 ¹⁾	● 3SB3 □□ 0-0DA21	● 3SB3 □□ 1-0DA31	● 3SB3 □□ 0-1DA21 ¹⁾
● 3SB3 □□ 1-0AA41	● 3SB3 □□ 1-0BA41 ¹⁾	● 3SB3 □□ 0-0DA31	● 3SB3 □□ 1-0DA41	● 3SB3 □□ 0-1DA31 ¹⁾
● 3SB3 □□ 1-0AA51	● 3SB3 □□ 1-0BA51 ¹⁾	● 3SB3 □□ 0-0DA41	● 3SB3 □□ 1-0DA51	● 3SB3 □□ 0-1DA41 ¹⁾
○ 3SB3 □□ 1-0AA61	○ 3SB3 □□ 1-0BA71 ¹⁾	● 3SB3 □□ 0-0DA51	○ 3SB3 □□ 1-0DA61	diameter 40 mm
○ 3SB3 □□ 1-0AA71		○ 3SB3 □□ 0-0DA61	○ 3SB3 □□ 1-0DA71	● 3SB3 □□ 0-1GA11 ¹⁾
		○ 3SB □□ 0-0DB51 ¹⁾		● 3SB3 □□ 0-1GA21 ¹⁾
				● 3SB3 □□ 0-1GA31 ¹⁾
				● 3SB3 □□ 0-1GA41 ¹⁾
				diameter 60 mm
				● 3SB3 □□ 0-1QA11 ¹⁾
				● 3SB3 □□ 0-1QA21 ¹⁾
				● 3SB3 □□ 0-1QA31 ¹⁾
				● 3SB3 □□ 0-1QA41 ¹⁾



EMERGENCY SWITCHING-OFF/EMERGENCY STOP mushroom-shaped pushbutton	Knob	Knob	illuminated knob	illuminated knob
with positive latching function according to EN 418 (ISO 13850), 40 mm diameter, with spring action, maintained-contact type, with safety lock, key-release	2 switch positions 0-I maintained-contact type/ 0-I momentary-contact type	3 switch positions I-0-II maintained-contact type/ I-0-II momentary-contact type	2 switch positions 0-I maintained-contact type/ 0-I momentary-contact type (incl. holder to snap-on elements)	3 switch positions I-0-II maintained-contact type/ I-0-II momentary-contact type (incl. holder to snap-on elements)
RONIS	● 3SB3 □□ 0-2KA11/ 3SB3 □□ 0-2LA11	● 3SB3 □□ 0-2DA11/ 3SB3 □□ 0-2EA11	● 3SB3 □□ 1-2KA21/ 3SB3 □□ 1-2LA21	● 3SB3 □□ 1-2DA21/ 3SB3 □□ 1-2EA21
● 3SB3 □□ 0-1BA20	● 3SB3 □□ 0-2KA21/ 3SB3 □□ 0-2LA21	● 3SB3 □□ 0-2DA21/ 3SB3 □□ 0-2EA21	● 3SB3 □□ 1-2KA31/ 3SB3 □□ 1-2LA31	● 3SB3 □□ 1-2DA31/ 3SB3 □□ 1-2EA31
CES	● 3SB3 □□ 0-2KA41/ 3SB3 □□ 0-2LA41	● 3SB3 □□ 0-2DA41/ 3SB3 □□ 0-2EA41	● 3SB3 □□ 1-2KA41/ 3SB3 □□ 1-2LA41	● 3SB3 □□ 1-2DA41/ 3SB3 □□ 1-2EA41
● 3SB3 □□ 0-1KA20	○ 3SB3 □□ 0-2KA61/ 3SB3 □□ 0-2LA61	○ 3SB3 □□ 0-2DA61/ 3SB3 □□ 0-2EA61	● 3SB3 □□ 1-2KA51/ 3SB3 □□ 1-2LA51	● 3SB3 □□ 1-2DA51/ 3SB3 □□ 1-2EA51
BKS	○ 3SB3 □□ 0-2KA71/ 3SB3 □□ 0-2LA71		○ 3SB3 □□ 1-2KA71/ 3SB3 □□ 1-2LA71	○ 3SB3 □□ 1-2DA71/ 3SB3 □□ 1-2EA71
● 3SB3 □□ 0-1LA20	Heavy-duty knob	Heavy-duty knob	Heavy-duty knob	Heavy-duty knob
● 3SB3 □□ 0-1MA20	● 3SB35 00-2PA11/ 3SB35 00-2QA11	● 3SB35 00-2SA11/ 3SB35 00-2TA11	● 3SB35 01-2PA21/ 3SB35 01-2QA21	● 3SB35 01-2SA21/ 3SB35 01-2TA21
IKON	● 3SB35 00-2PA21/ 3SB35 00-2QA21	● 3SB35 00-2SA21/ 3SB35 00-2TA21	● 3SB35 01-2PA31/ 3SB35 01-2QA31	● 3SB35 01-2SA31/ 3SB35 01-2TA31
● 3SB3500-1UA20	● 3SB35 00-2PA41/ 3SB35 00-2QA41	● 3SB35 00-2SA41/ 3SB35 00-2TA41	● 3SB35 01-2PA41/ 3SB35 01-2QA41	● 3SB35 01-2SA41/ 3SB35 01-2TA41
	○ 3SB35 00-2PA61/ 3SB35 00-2QA61	○ 3SB35 00-2SA61/ 3SB35 00-2TA61	● 3SB35 01-2PA51/ 3SB35 01-2QA51	● 3SB35 01-2SA51/ 3SB35 01-2TA51
			○ 3SB35 01-2PA71/ 3SB35 01-2QA71	○ 3SB35 01-2SA71/ 3SB35 01-2TA71

Actuator and indicator elements with holders

Round, molded-plastic 3SB3 **00**..-.....
 Round, metal 3SB3 **50**..-.....
 Square, molded-plastic 3SB3 **11**..-.....



RONIS safety lock	CES safety lock	IKON safety lock	BKS safety lock	OMR safety lock
flat, Lock No. SB30 ³⁾	Lock No. SSG10 ³⁾	Lock No. 360012K1	Lock No. S1 ³⁾	light blue, Lock No. 73038 ³⁾
① 0+I 3SB3 <input type="checkbox"/> <input type="checkbox"/> 0-4AD11 0 3SB3 <input type="checkbox"/> <input type="checkbox"/> 0-4AD01 I 3SB3 <input type="checkbox"/> <input type="checkbox"/> 0-4AD21	① 0+I 3SB3 <input type="checkbox"/> <input type="checkbox"/> 0-4LD11 0 3SB3 <input type="checkbox"/> <input type="checkbox"/> 0-4LD01 I 3SB3 <input type="checkbox"/> <input type="checkbox"/> 0-4LD21	① 0+I 3SB3 <input type="checkbox"/> <input type="checkbox"/> 0-5LD11 0 3SB3 <input type="checkbox"/> <input type="checkbox"/> 0-5LD01	① 0+I 3SB3 <input type="checkbox"/> <input type="checkbox"/> 0-5AD11 0 3SB3 <input type="checkbox"/> <input type="checkbox"/> 0-5AD01 I 3SB3 <input type="checkbox"/> <input type="checkbox"/> 0-5AD21	① 0+I 3SB3 <input type="checkbox"/> <input type="checkbox"/> 0-3AG11 0 3SB3 <input type="checkbox"/> <input type="checkbox"/> 0-3AG01 I 3SB3 <input type="checkbox"/> <input type="checkbox"/> 0-3AG21 ¹⁾
② 0 3SB3 <input type="checkbox"/> <input type="checkbox"/> 0-4BD01	② 0 3SB3 <input type="checkbox"/> <input type="checkbox"/> 0-4MD01	② 0 3SB3 <input type="checkbox"/> <input type="checkbox"/> 0-5MD01	② 0 3SB3 <input type="checkbox"/> <input type="checkbox"/> 0-5BD01	② 0 3SB3 <input type="checkbox"/> <input type="checkbox"/> 0-3BG01
③ I+O+II 3SB3 <input type="checkbox"/> <input type="checkbox"/> 0-4DD11 0 3SB3 <input type="checkbox"/> <input type="checkbox"/> 0-4DD01	③ I+O+II 3SB3 <input type="checkbox"/> <input type="checkbox"/> 0-4PD11 0 3SB3 <input type="checkbox"/> <input type="checkbox"/> 0-4PD01 I+II 3SB3 <input type="checkbox"/> <input type="checkbox"/> 0-4PD41 ¹⁾ I 3SB3 <input type="checkbox"/> <input type="checkbox"/> 0-4PD21 ¹⁾ II 3SB3 <input type="checkbox"/> <input type="checkbox"/> 0-4PD31 ¹⁾	③ I+O+II 3SB3 <input type="checkbox"/> <input type="checkbox"/> 0-5PD11 ¹⁾ 0 3SB3 <input type="checkbox"/> <input type="checkbox"/> 0-5PD01 ¹⁾ I+II 3SB3 <input type="checkbox"/> <input type="checkbox"/> 0-5PD41 ²⁾	③ I+O+II 3SB3 <input type="checkbox"/> <input type="checkbox"/> 0-5DD11 0 3SB3 <input type="checkbox"/> <input type="checkbox"/> 0-5DD01 ¹⁾ I+II 3SB3 <input type="checkbox"/> <input type="checkbox"/> 0-5DD41 ²⁾ I 3SB3 <input type="checkbox"/> <input type="checkbox"/> 0-5DD21 ¹⁾ II 3SB3 <input type="checkbox"/> <input type="checkbox"/> 0-5DD31	③ I+O+II 3SB3 <input type="checkbox"/> <input type="checkbox"/> 0-3DG11 0 3SB3 <input type="checkbox"/> <input type="checkbox"/> 0-3DG01 ¹⁾ I+II 3SB3 <input type="checkbox"/> <input type="checkbox"/> 0-3DG41 ²⁾
④ 0 3SB3 <input type="checkbox"/> <input type="checkbox"/> 0-4ED01	④ 0 3SB3 <input type="checkbox"/> <input type="checkbox"/> 0-4QD01	④ 0 3SB3 <input type="checkbox"/> <input type="checkbox"/> 0-5QD01	④ 0 3SB3 <input type="checkbox"/> <input type="checkbox"/> 0-5ED01 ¹⁾	④ 0 3SB3 <input type="checkbox"/> <input type="checkbox"/> 0-3EG01 ¹⁾

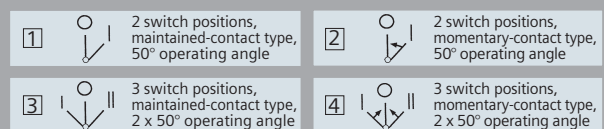


OMR safety lock	OMR safety lock	OMR safety lock	Indicator light	Indicator light
red, Lock No. 73037 ³⁾	black, Lock No. 73034	yellow, Lock No. 73033	smooth	with concentric rings
① 0+I 3SB3 <input type="checkbox"/> <input type="checkbox"/> 0-3AH11 0 3SB3 <input type="checkbox"/> <input type="checkbox"/> 0-3AH01 I 3SB3 <input type="checkbox"/> <input type="checkbox"/> 0-3AH21 ¹⁾	① 0+I 3SB3 <input type="checkbox"/> <input type="checkbox"/> 0-3AJ11 0 3SB3 <input type="checkbox"/> <input type="checkbox"/> 0-3AJ01 I 3SB3 <input type="checkbox"/> <input type="checkbox"/> 0-3AJ21	① 0+I 3SB3 <input type="checkbox"/> <input type="checkbox"/> 0-3AK11 0 3SB3 <input type="checkbox"/> <input type="checkbox"/> 0-3AK01 I 3SB3 <input type="checkbox"/> <input type="checkbox"/> 0-3AK21 ¹⁾²⁾	● 3SB3 <input type="checkbox"/> <input type="checkbox"/> 1-6AA20 ● 3SB3 <input type="checkbox"/> <input type="checkbox"/> 1-6AA30 ● 3SB3 <input type="checkbox"/> <input type="checkbox"/> 1-6AA40 ● 3SB3 <input type="checkbox"/> <input type="checkbox"/> 1-6AA50 ○ 3SB3 <input type="checkbox"/> <input type="checkbox"/> 1-6AA60 (clean) 3SB3 <input type="checkbox"/> <input type="checkbox"/> 1-6AA70	● 3SB3 <input type="checkbox"/> <input type="checkbox"/> 1-6BA20 ¹⁾ ● 3SB3 <input type="checkbox"/> <input type="checkbox"/> 1-6BA30 ¹⁾ ● 3SB3 <input type="checkbox"/> <input type="checkbox"/> 1-6BA40 ¹⁾ ● 3SB3 <input type="checkbox"/> <input type="checkbox"/> 1-6BA50 ¹⁾ ○ 3SB3 <input type="checkbox"/> <input type="checkbox"/> 1-6BA60 ¹⁾ (clean) 3SB3 <input type="checkbox"/> <input type="checkbox"/> 1-6BA70 ¹⁾
② 0 3SB3 <input type="checkbox"/> <input type="checkbox"/> 0-3BH01	② 0 3SB3 <input type="checkbox"/> <input type="checkbox"/> 0-3BJ01	② 0 3SB3 <input type="checkbox"/> <input type="checkbox"/> 0-3BK01		
③ I+O+II 3SB3 <input type="checkbox"/> <input type="checkbox"/> 0-3DH11 ¹⁾ 0 3SB3 <input type="checkbox"/> <input type="checkbox"/> 0-3DH01 I+II 3SB3 <input type="checkbox"/> <input type="checkbox"/> 0-3DH41 ²⁾	③ I+O+II 3SB3 <input type="checkbox"/> <input type="checkbox"/> 0-3DJ11 0 3SB3 <input type="checkbox"/> <input type="checkbox"/> 0-3DJ01 I+II 3SB3 <input type="checkbox"/> <input type="checkbox"/> 0-3DJ41 ²⁾	③ I+O+II 3SB3 <input type="checkbox"/> <input type="checkbox"/> 0-3DK11 ¹⁾ 0 3SB3 <input type="checkbox"/> <input type="checkbox"/> 0-3DK01 ¹⁾ I+II 3SB3 <input type="checkbox"/> <input type="checkbox"/> 0-3DK41 ²⁾		
④ 0 3SB3 <input type="checkbox"/> <input type="checkbox"/> 0-3EH01 ¹⁾	④ 0 3SB3 <input type="checkbox"/> <input type="checkbox"/> 0-3EJ01 ¹⁾	④ 0 3SB3 <input type="checkbox"/> <input type="checkbox"/> 0-3EK01 ¹⁾		



Acoustic annunciator, IP40	Twin pushbutton unit	Twin pushbutton unit	Twin pushbutton unit	Twin pushbutton unit
with 24 V DC acoustic transducer	with flat buttons, degree of protection IP65	with indicator light, with flat buttons, degree of protection IP65, incl. transformer for 3 elements	with one flat button and one raised button, degree of protection IP65	with indicator light, with one flat button and one raised button, degree of protection IP65, incl. holder for 3 elements
3SB30 00-7AA10	● 3SB31 00-8AC21 ○ 3SB31 00-8AC31 ● 3SB31 00-8AC31	● 3SB31 01-8BC21 ○ 3SB31 01-8BC31 ● 3SB31 01-8BC31	● 3SB31 00-8CC21 ○ 3SB31 00-8CC31 ● 3SB31 00-8CC31	● 3SB31 01-8DC21 ○ 3SB31 01-8DC31 ● 3SB31 01-8DC31

¹⁾ This version is not available in square design
²⁾ This version is not available in round, molded-plastic design
³⁾ Key withdrawable with position



Accessories: contact blocks and lamp holders



Contact blocks with screw terminals

for front-panel mounting

1NO 3SB34 00-0B	1NC 3SB34 00-0C	1NO + 1NC 3SB34 00-0A	2NO 3SB34 00-0D
		1 NO leading + 1 NC delayed 3SB34 00-0H	2NC 3SB34 00-0E

Contact blocks with Cage-Clamp terminals

for front-panel mounting

1NO 3SB34 03-0B	1NC 3SB34 03-0C	1NO + 1NC 3SB3403-0A	2NC 3SB3403-0E
		2NO 3SB3403-0D	1NO leading + 1NC delayed 3SB3403-0H



Lamp holder with integrated LED and screw terminals

24 V AC/DC	120 V AC	230 V AC
3SB3400-1PA	3SB3400-1QA	3SB3400-1RA
3SB3400-1PB	3SB3400-1QB	3SB3400-1RB
3SB3400-1PC	3SB3400-1QC	3SB3400-1RC
3SB3400-1PD	3SB3400-1QD	3SB3400-1RD
3SB3400-1PE	3SB3400-1QE	3SB3400-1RE

Lamp holder with integrated LED and Cage-Clamp terminals

24 V AC/DC	120 V AC	230 V AC
3SB3403-1PA	3SB3403-1QA	3SB3403-1RA
3SB3403-1PB	3SB3403-1QB	3SB3403-1RB
3SB3403-1PC	3SB3403-1QC	3SB3403-1RC
3SB3403-1PD	3SB3403-1QD	3SB3403-1RD
3SB3403-1PE	3SB3403-1QE	3SB3403-1RE



Lamp holder with screw terminals

BA 9s with 130 V lamp
operating voltage
230/240 V AC
3SB34 00-1C

110/130 V AC
3SB34 00-1B

Lamp holder with screw terminals

for front-panel mounting

BA 9s
3SB34 00-1A

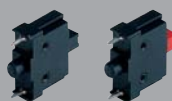
BA 9s
with lamp 24 V AC/DC
3SB34 00-1D

Lamp holder with Cage-Clamp terminals

for front-panel mounting

BA 9s
3SB34 03-1A

BA 9s with 130 V lamp
operating voltage 230/240 V
3SB34 03-1C



Contact blocks with solder pin

for PCB mounting

1NO
3SB34 11-0B

1NC
3SB34 11-0C

Lamp holder with solder pins

for PCB mounting
(without lamp)

W2 x 4.6d
3SB34 11-1A

Transformers

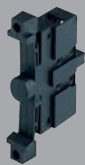
for snapping onto lamp holder
3SB34 00-1A, 50/60 Hz

127/24 V 3SB34 00-3A
127/6 V 3SB34 00-3M

240/24 V 3SB34 00-3C
240/6 V 3SB34 00-3P

400/24 V 3SB34 00-3F
400/6 V 3SB34 00-3S

Accessories: contact blocks and lamp holders for enclosures

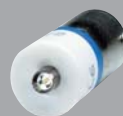


Contact blocks with screw terminals		Contact blocks with Cage-Clamp terminals		Lamp holders with screw terminals	
1NO 3SB34 20-0B	1NC 3SB34 20-0C	1NO 3SB34 23-0B	1NC 3SB34 23-0C	BA 9s 3SB34 20-1A	Operating voltage 230/240 V AC BA 9s with integrated voltage reducer and 130 V lamp 3SB34 20-1C



Lamp holder with integrated LED and screw terminals				Lamp holders with integrated LED and Cage-Clamp terminals			
24 V AC/DC	120 V AC	230 V AC		24 V AC/DC	120 V AC	230 V AC	
● 3SB3420-1PA	3SB3420-1QA	3SB3420-1RA		● 3SB3423-1PA	3SB3423-1QA	3SB3423-1RA	
● 3SB3420-1PB	3SB3420-1QB	3SB3420-1RB		● 3SB3423-1PB	3SB3423-1QB	3SB3423-1RB	
● 3SB3420-1PC	3SB3420-1QC	3SB3420-1RC		● 3SB3423-1PC	3SB3423-1QC	3SB3423-1RC	
● 3SB3420-1PD	3SB3420-1QD	3SB3420-1RD		● 3SB3423-1PD	3SB3423-1QD	3SB3423-1RD	
○ 3SB3420-1PE	3SB3420-1QE	3SB3420-1RE		○ 3SB3423-1PE	3SB3423-1QE	3SB3423-1RE	

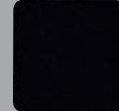
Accessories: Lamps



Incandescent lamps, socket BA 9s, 1.2 W, lamps in a package: 10		LED lamps, socket BA 9s, operating current max. 15 mA, lamps in a package: 10	
24 V	3SX1344	24 V AC/DC	230 V AC
110...130 V	3SX1731	● 3SB3901-1CA	3SB3901-1CF
		● 3SB3901-1BA	3SB3901-1BF
		● 3SB3901-1DA	3SB3901-1DF
		● 3SB3901-1PA	3SB3901-1PF
		○ 3SB3901-1QA	3SB3901-1QF

Lamps for PC-board mounting, socket wedge-base, W2 x 4.6 d, 1.0 W, lamps in a package: 10		LED lamps, socket, W2 x 4.6 d, lamps in a package: 10	
24 V	3SB2908-1AC	24 V DC	
		● 3SB3901-1SB	
		● 3SB3901-1RB	
		● 3SB3901-1TB	
		● 3SB3901-1BD	
		○ 3SB3901-1UB	

Accessories: plates



Inscription plates (plastic, black with white lettering or silver with black lettering)

Inscription	12.5 mm x 27 mm Self-adhesive inscription plates		27 mm x 27 mm Self-adhesive inscription plates		22 mm x 22 mm Self-adhesive inscription plates	
		PKG (labels in a package)		PKG (labels in a package)		PKG (labels in a package)
Blank	3SB3902-1AA	10	3SB3903-1AA	10	3SB3906-1AA	10
On	3SB3902-1AB	10	3SB3903-1AB	10	3SB3906-1AB	10
Off	3SB3902-1AC	10	3SB3903-1AC	10	3SB3906-1AC	10
Up	3SB3902-1AD	10	3SB3903-1AD	10	3SB3906-1AD	10
Down	3SB3902-1AE	10	3SB3903-1AE	10	3SB3906-1AE	10
Forward	3SB3902-1AF	10	3SB3903-1AF	10	3SB3906-1AF	10
Reverse	3SB3902-1AG	10	3SB3903-1AG	10	3SB3906-1AG	10
Left	3SB3902-1AJ	10	3SB3903-1AJ	10	3SB3906-1AJ	10
Right	3SB3902-1AH	10	3SB3903-1AH	10	3SB3906-1AH	10
Start	3SB3902-1AP	10	3SB3903-1AP	10	3SB3906-1AP	10
Fault	3SB3902-1AQ	10	3SB3903-1AQ	10	3SB3906-1AQ	10
O I	3SB3902-1MF	10	3SB3903-1MF	10	3SB3906-1MF	10

Labels that can be inscribed (white) using the SIRIUS Label Designer software (more information is provided on Page 15)

	3SB3902-2AA	480	3SB3903-2AA	480	3SB3906-2AA	700
--	-------------	-----	-------------	-----	-------------	-----

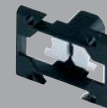


Plate holders

	12.5 x 27 mm	27 x 27 mm
for inscription plates		
for round actuators, PS: 10	3SB39 22-0AV	3SB39 23-0AV
for square actuators, PS: 5	3SB39 42-0AX	3SB39 43-0AX
for twin pushbutton units, PS: 5	3SB39 22-0AY	–

Holders

to snap on 3 elements, PS: 10	3SB39 01-0AB
with pressure support elements for knob, safety lock and twin pushbutton unit to actuate the center contact block, PS: 10	3SB39 01-0AC



Backing plate as contrast surface for EMERGENCY SWITCHING-OFF/EMERGENCY STOP

Inscription	23 mm hole,		Cut-out 26 mm x 26 mm, outer diameter 80 mm
	for round version	for square version	
No inscription	3SB3921-0AB	3SB3941-0AB	round
EMERGENCY STOP	3SB3921-0AD	3SB3941-0AD	round, metal
No inscription	3SB3921-0DA (illuminatable)		square

Blanking plug

	3SB39 21-0AA
	3SB19 02-0AQ
	3SB39 41-0AA

Protective collar

	5 holes for padlocks, yellow, plastic
	3SB39 21-0AK
	3SB3921-0CG

Housings

Surface-mounting units; cable entry at top and bottom, 1 x M20 each

Molded-plastic housing 0

Metal housing 2



1 command point	1 command point	1 command point	2 command points	3 command points
green pushbutton, 1 NO, inscription plate "I" 3SB38 01-□DA3	EMERGENCY SWITCHING-OFF/ EMERGENCY STOP mushroom-shaped pushbutton with positive latching function according to EN 418 (ISO 13850), 1 NC contact, 40 mm diameter, maintained-contact type 3SB38 01-□DG3	EMERGENCY SWITCHING-OFF/EMERGENCY STOP mushroom-shaped pushbutton with positive latching function according to EN 418 (ISO 13850), 1 NC contact, 40 mm diameter, maintained contact type with protective collar 3SB38 01-□DF3	green pushbutton, 1 NO, inscription plate "I"; red pushbutton, 1 NC, inscription plate "O" 3SB38 02-□DA3	clear indicator light, BA 9s, blank inscription plate; green pushbutton, 1 NO, inscription plate "I"; red pushbutton, 1 NC, inscription plate "O" 3SB38 03-□DA3
red pushbutton, 1 NC, inscription plate "O" 3SB38 01-□DB3		EMERGENCY SWITCHING-OFF/EMERGENCY STOP mushroom-shaped pushbutton, 60 mm diameter with protective collar for 5 padlocks, yellow metal housing 3SB3801-2EA30-0CC0	white pushbutton, 1 NO, inscription plate "I"; black pushbutton, 1 NC, inscription plate "O" 3SB38 02-□DB3	black pushbutton, 1NO, inscription plate "II"; black pushbutton, 1 NO, inscription plate "I"; red pushbutton, 1 NC, inscription plate "O" 3SB38 03-□DB3
white pushbutton, 1 NO, inscription plate "I" 3SB38 01-□DD3		EMERGENCY SWITCHING-OFF/ EMERGENCY STOP mushroom-shaped pushbutton, 60 mm diameter with protective collar for 5 padlocks, gray metal housing 3SB801-2EB30-0CC0		clear indicator light, BA 9s, blank inscription plate; white pushbutton, 1NO, inscription plate "I"; black pushbutton, 1NC, inscription plate "O" 3SB38 03-□DC3
black pushbutton, 1 NC, inscription plate "O" 3SB38 01-□DE3				

1 to 6 command points

Pendant pushbutton
3SB38 87-1AZ

Empty housings

Cable entry at the top and bottom, 1 x metric thread each:
M20 for 1 to 3 command points
M25 for 4 to 6 command points



1 command point	2 command points	3 command points	4 command points	6 command points
3SB38 01-□AA3 3SB38 01-□AB3 (for EMERGENCY STOP)	3SB38 02-□AA3	3SB38 03-□AA3	3SB38 04-□AA3	3SB38 06-□AA3

Housing for contact blocks and lamp holders for base mounting or for single-pole contact blocks and lamp holders for front-panel mounting.

Smart add-ons – **AS-Interface and SIRIUS Label Designer**

Our SIRIUS commanding and signaling devices can be connected-up in various ways: Conventionally, through AS-Interface or safely and in a user-friendly fashion via ASIsafe® with our 3TK28 safety relays or to the ET200S® distributed I/O.

Connection with AS-Interface

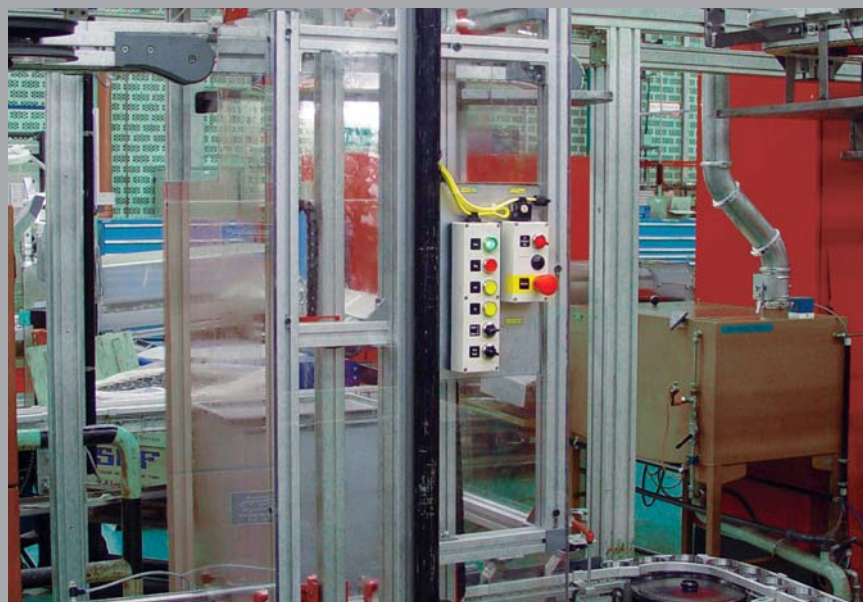
SIRIUS commanding and signaling devices are ideally suited for networked systems in your plant or equipment. The individual components can be integrated into the AS-Interface system. The reason: In compliance with IEC 62026-2, they are fully compatible to AS-Interface components such as master, slaves, power supply etc. – and can be operated together on the yellow AS-Interface cable. This means that Siemens supplies all of the components to configure a safety-relevant AS-Interface network.

Advantages at a glance:

- Safety-relevant and standard data on just one bus
- Neither failsafe PLC nor special master required
- Groups of safety-relevant signals can be formed
- Simple system configuration using standardized AS-Interface technology
- Existing systems can be quickly and simply expanded

Safety-relevant communications via ASIsafe

Safety-relevant components can be integrated into AS-Interface – up to Cat. 4 according to EN 954-1 or SIL3 according to IEC 61508 – using ASIsafe, the safety-relevant version of AS-Interface. This can be implemented just as simply as for standard components – using the yellow AS-Interface cable. This means that safety-relevant and standard I/O modules are installed and operated together in one and the same network. Safety-relevant data is transferred using the existing standard bus – which means that you profit from enormous cost savings when it comes to installation and engineering. And, it goes without saying that all of the relevant standards are complied with. The network infrastructure with AS-Interface master, power supply and shaped cable remains unchanged.



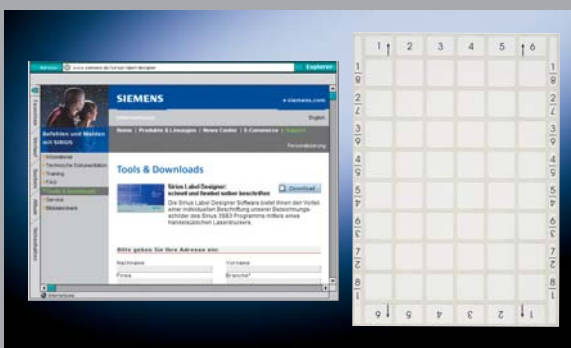


EMERGENCY STOP devices

EMERGENCY STOP devices can be directly connected using the Standard AS-Interface with safety-relevant communications. This applies to SIRIUS 3SB3 EMERGENCY STOP commanding devices. These can either be installed in the front panel or can be mounted in an enclosure. An EMERGENCY STOP device mounted in the front panel can be directly connected to AS-Interface via a safety module (F-adapter).

Ordering data

for EMERGENCY SWITCHING-OFF/EMERGENCY STOP actuator
SIRIUS 3SB3, front panel mounting **3SF5 402-1AA01**



Software/Tool SIRIUS Label Designer

You can create your own label plates using a commercially available laser printer using this software and the labels that you can inscribe yourself (on Page 13). The adhesive labels are then attached to our plate holders. The latching labels can be snapped-on to the plate holders – the round ones are inserted in the caps of the illuminated pushbuttons and switches. Three-line texts or symbols can be printed. For applications with higher demands we recommend our plastic plates for laser inscription.

More information:

<http://www.siemens.com/sirius-label-designer>

Labels that you can inscribe yourself: Refer to Page 13

Enclosures* with AS-Interface connection

* Molded-plastic enclosures are equipped with connections for AS-Interface ribbon cables or insulation piercing technology; for the metal versions, the AS-Interface cable is fed into the enclosure.



EMERGENCY SWITCHING-OFF/EMERGENCY STOP	2 command points	3 command points
EMERGENCY SWITCHING-OFF/EMERGENCY STOP mushroom-shaped pushbutton with positive latching function according to EN 418 (ISO 13850), via AS-Interface adapter, yellow upper housing section, without protective collar 3SF58 11-□AA08	green pushbutton, inscription plate "I"; red pushbutton, inscription plate "O" 3SF58 12-□DA00	clear indicator light, BA 9s, blank inscription plate; green pushbutton, inscription plate "I"; red pushbutton, inscription plate "O" 3SF58 13-□DA00
EMERGENCY SWITCHING-OFF/EMERGENCY STOP mushroom-shaped pushbutton with positive latching function according to EN 418 (ISO 13850), via AS-Interface adapter, yellow upper housing section, with protective collar 3SF58 11-□AB08	white pushbutton, inscription plate "I"; black pushbutton, inscription plate "O" 3SF58 12-□DB00	black pushbutton, inscription plate "I"; black pushbutton, inscription plate "O"; red pushbutton, inscription plate "O" 3SF58 13-□DB00
		clear indicator light, BA 9s, blank inscription plate; white pushbutton, inscription plate "I"; black pushbutton, inscription plate "O" 3SF58 13-□DC00



AS-Interface slaves for AS-Interface housings equipped by the customer				Cable set
F slave, 2 safety inputs for molded-plastic housings, 1–6 command points, without protective collar 3SF5 500-0BA	F slave, 2 safety inputs for molded-plastic or metal housings, 1 command point, with protective collar 3SF5 500-0DA	A/B slave, 4 inputs/3 outputs for molded-plastic housings, 2–6 command points 3SF5 500-0BB	Slave, 4 inputs/4 outputs for molded-plastic housings, 2–6 command points 3SF5 500-0BC	For F slave 3SF5 900-0BA
F slave, 2 safety inputs for metal housings, 1–6 command points, without protective collar 3SF5 500-0CA		A/B slave, 4 inputs/3 outputs for metal housings, 2–6 command points 3SF5 500-0CB	Slave, 4 inputs/4 outputs for metal housings, 2–6 command points 3SF5 500-0CC	For slave 4 I/4 O or for slave 4 I (3 O) 3SF5 900-0BB



Connection elements for AS-Interface housings equipped by the customer			
For AS-Interface ribbon cables, connected using insulation piercing technology, for molded-plastic housings, 1–3 command points 3SF5 900-0CA	For AS-Interface connection through an M12 connector, 1–3 command points 3SF5 900-□CC	For AS-Interface ribbon cables, cable is introduced into the housing, for molded-plastic or metal housings, 1–3 command points 3SF5 900-0CG	For round cables, cable is introduced into the housing, for molded-plastic or metal housings, 1–3 command points 3SF5 900-0CJ
For AS-Interface ribbon cables, connection using insulation piercing technology, for molded-plastic housings, 4–6 command points 3SF5 900-0CB	For AS-Interface connection through an M12 connector, 4–6 command points 3SF5 900-□CD	For AS-Interface ribbon cables, cable is introduced into the housing, for molded-plastic or metal housings, 4–6 command points 3SF5 900-0CH	For round cables, cable is introduced into the housing, for molded-plastic or metal housings, 4–6 command points 3SF5 900-0CJ

Ordering by fax +49/911/978-3321 CD/Z1137



SIRIUS Industrial Controls

Newsletter

Always up-to-date: Our regular Newsletter gives you current information about industrial controls and power distribution. Simply register under www.siemens.com/lowvoltage/newsletter

Please send the selected information to the following address:

Company/Department

Name

Street, Postal Code/City

Telephone/Fax

E-mail

SWITCHING

SIRIUS Solid-state switching devices

PROTECTING

SIRIUS Infeed system

SIRIUS Engineering load feeders

SIRIUS Soft starter

SIMATIC ET 200pro

SIRIUS Motor starter

STARTING

MONITORING AND CONTROLLING

SIRIUS Motor management system SIMOCODE pro

SIRIUS Relays

SIRIUS Safety Relays

DETECTING

SIRIUS Position switches

COMMANDING AND SIGNALING

SIRIUS Pushbuttons and indicator lights

SIRIUS Signaling columns and integrated signal lamps

SIRIUS Cable-operated switches

SUPPLYING

SIVENT Fans

SIDAC Reactors & filters

SIDAC & SIVENT Solutions

ENGINEERING

Motor starter ES

SIMOCODE ES

Soft starter ES

SIRIUS AND MORE

SIRIUS Safety Integrated

AS-Interface

SIRIUS Connection systems

ECOFAST

SIRIUS Modular system

Siemens AG

Automation and Drives
Low-Voltage Controls and Distribution
P.O. Box 48 48, 90327 NUREMBERG, GERMANY

www.siemens.com/lowvoltage/technical-assistance
www.siemens.com/sirius

The information provided in this brochure contains merely general descriptions or characteristics of performance which in case of actual use do not always apply as described or which may change as a result of further development of the products. An obligation to provide the respective characteristics shall only exist if expressly agreed in the terms of contract.

All product designations may be trademarks or product names of Siemens AG or supplier companies whose use by third parties for their own purposes could violate the rights of the owners.