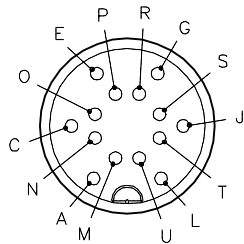


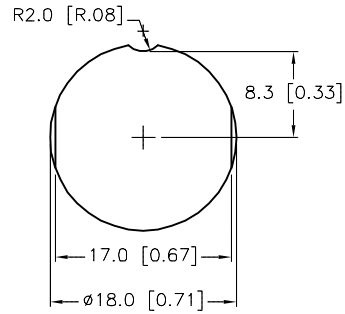
MALE END VIEW



- A = BROWN
- C = RED/BLUE
- E = BLACK
- G = PINK
- J = GREEN
- L = BLUE
- M = ORANGE
- N = GREY/BROWN
- O = VIOLET
- P = WHITE
- R = RED
- S = GREY
- T = YELLOW
- U = TAN

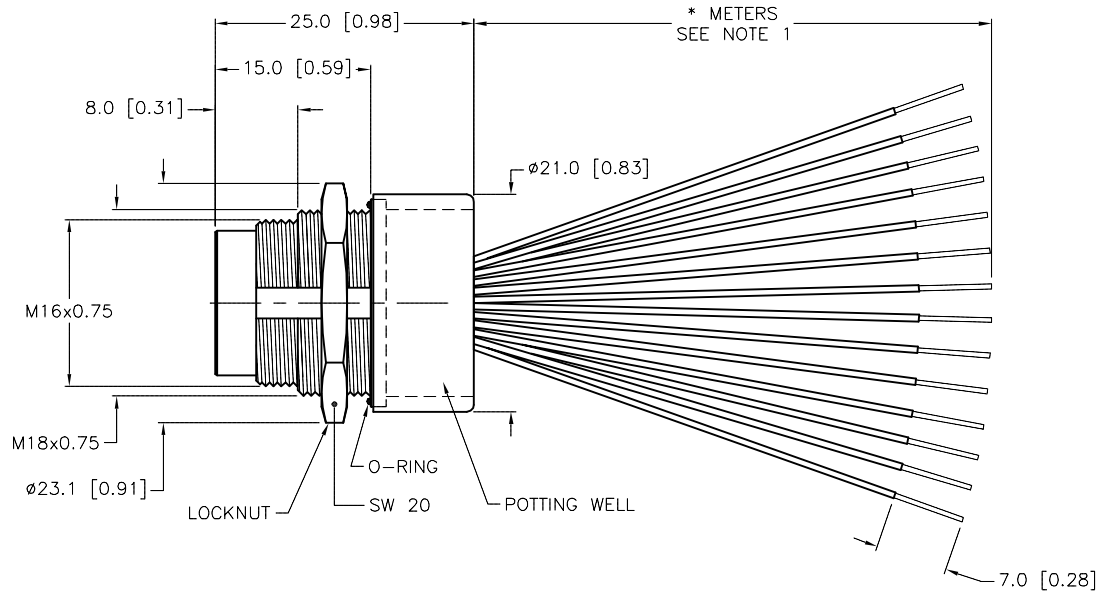
M16 connector

PANEL CUTOUT/OPTIONS



SPECIFICATIONS

CONTACT CARRIER MATERIAL	PBT
CONTACT MATERIAL/PLATING	COPPER ALLOY/GOLD
HOUSING MATERIAL/PLATING	DIECAST ZINC/NICKEL
RATED CURRENT [A]	3.0 A
RATED VOLTAGE [V]	30 VAC/VDC
CONDUCTOR INSULATION MATERIAL	PVC
NUMBER OF CONDUCTORS [AWG]	14x24 AWG
TEMPERATURE RANGE	-40°C to -105°C (-40°F to +221°F)
PROTECTION CLASS	MEETS IEC IP67
MAX PANEL THICKNESS	4.0mm [0.16"]



CABLE LENGTH	TOLERANCE *
ALL LENGTHS	+ 4% (OR 50mm) OF LENGTH - 0% (OR 0mm) OF LENGTH WHICHEVER IS GREATER
STRIP LENGTH	TOLERANCE *
0-7mm	±0.5mm
8-29mm	±1.0mm
30-49mm	±2.0mm
50-69mm	±3.0mm
70-100mm	±4.0mm
OVER 100mm	±5.0mm

* UNLESS OTHERWISE SPECIFIED

NOTES:

1. "*" INDICATES LEAD LENGTH IN METERS. CONTACT TURCK TO ORDER SPECIFIC LENGTHS.

SOURCE DRAWING - FOR REFERENCE ONLY

RELATED DOCUMENTS 1. 2. 3. 4.	3RD ANGLE PROJECTION 	THIS DRAWING IS CONFIDENTIAL AND THE PROPERTY OF TURCK INC. USE OF THIS DOCUMENT WITHOUT WRITTEN PERMISSION IS PROHIBITED.		3000 CAMPUS DRIVE MINNEAPOLIS, MN 55441 1-800-544-7769 (763) 553-7300 (763) 553-0708 fax turck.com	
		DRFT	JB	DATE	09/24/03
MATERIAL	SEE SPECIFICATIONS	APVD		SCALE	1=.7
FINISH	SEE SPECIFICATIONS	UNIT OF MEASUREMENT MILLIMETER [INCH]		IDENTIFICATION NO.	
		CONTACT TURCK FOR MORE INFORMATION		REV G	
		DO NOT SCALE THIS DRAWING		FILE: 777002564	
				SHEET 1 OF 1	

G	UPDATE CONTACT CARRIER SPECIFICATION	KMY	09/23/13	43385
REV	DESCRIPTION	BY	DATE	ECO NO.